

Nehalem Bay TSP Community Conversations

City of Manzanita

January 26, 2022



Meeting Overview

- Provide an overview of the TSP process.
- Share what we've heard so far and confirm priorities.
- Discuss proposed projects and gather feedback to inform the project lists.
- Overview of next steps and opportunities for input.

What We Want to Hear from You...

- **What is your top concern related to the transportation system?**
- **Are we missing any priorities?**
- **Which three projects are your top priorities? Why?**
- **What is missing?**
- **What outcomes do you want to see?**

TSP Overview

- **TSP 101**
- **TSP Milestones & Where We Are**
- **What We've Heard**
- **Community Goals & Priorities**

TSP 101

A realistic plan that results in action

A TSP provides a comprehensive, multimodal picture of how the existing and future transportation system meets the needs of its users.

- ODOT TSP Guidelines



TSP 101

The TSP will:

- Develop transportation networks for all users – drivers, transit riders, walkers and bicyclists.
- Predict how well the system will work in the future and suggest improvements.
- Establish new goals and policies to guide City decision-making.
- Develop a prioritized list of transportation projects to support bicyclists, pedestrians, transit riders, cars, and safety.
- Make recommendations about how to pay for improvements.

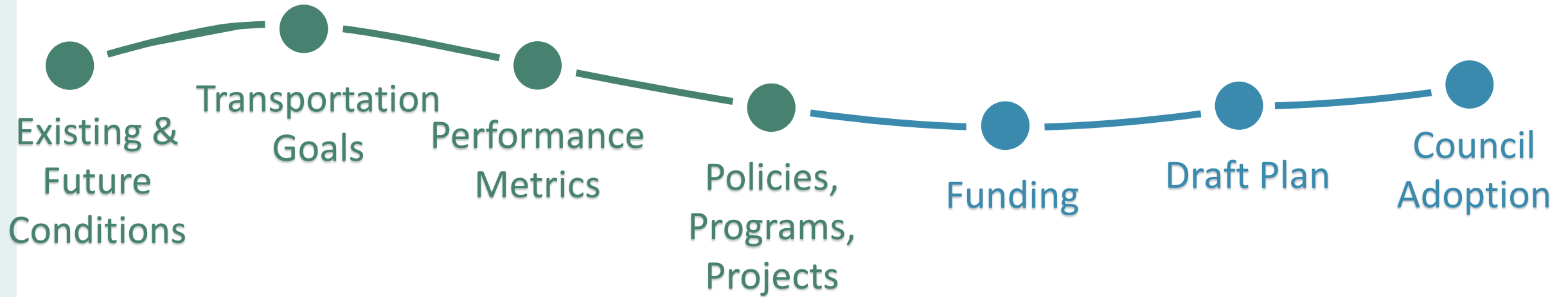


TSP 101

What will make the TSP Successful?

- A clear, consistent vision
- Goals & performance measures that reflect community goals
- Policies, programs, and projects that reflect existing work and future needs
- Clear direction for staff and Council

The TSP Process



Community Engagement



How do we make transportation better in Nehalem Bay?

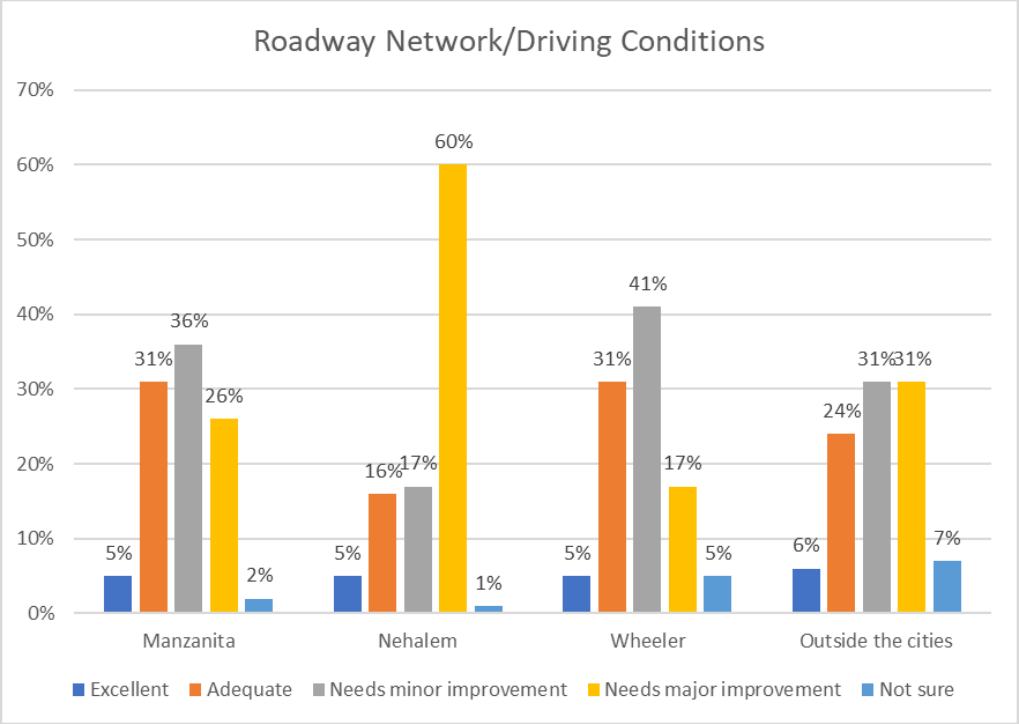
The Cities of Manzanita, Nehalem, Wheeler, and the Oregon Department of Transportation are developing a joint Transportation System Plan (TSP) for Nehalem Bay.

Now through **August 15th**, you can participate in our **online open house** to give us your ideas for improving transportation in our region.

Visit nehalembaytsp.org to take a survey and use an interactive map to tell us what you know.

What We Heard from Manzanita

- Safety concerns related to traveling by foot or bicycle and the need for multi-use facilities
- Road conditions
- Safety concerns on specific roads (Necarney City Road, Laneda Avenue)
- Need for better signage to reduce tourist confusion and congestion
- Increasing congestion



Why set TSP Goals?

What is the purpose of the TSP goals?

- Reflect each community's **values and vision** for the future
- Shape transportation **performance measures**
- Shape how **projects** are developed and prioritized



Quality of Life

Create a transportation system that provides equitable multimodal access for underserved and vulnerable populations and balances the needs of local travelers and regional through-traffic.

- Projects that advance this goal:
 - Improve access for **underserved or vulnerable populations**.
 - Improve a route predominately used by **local travelers** off US 101.
 - Improve the experience of people **traveling through** Nehalem Bay.

Create Safe Connections

Create safer connections between the Nehalem Bay communities for people walking, biking, or using other non-auto modes and identify strategies to reduce crashes for all users when traveling on US 101.

- Projects that advance this goal:
 - Address a location with a history of fatal/severe **injury crashes** and/or **bike/ped crashes**.
 - Create **new connections** off US 101 between Nehalem Bay communities.
 - Include a traffic calming element aimed at **slowing vehicle traffic** to improve safety and comfort for active transportation users.

Plan for the Future

Collaborate with ODOT and Tillamook County to create a transportation system that is resilient to extreme weather events, able to safely accommodate evacuation and recovery efforts, and consistent with the goals and objectives of each City, Tillamook County, and the state.

- Projects that advance this goal:
 - Maintain or rebuild **critical infrastructure**; or improve access for emergency vehicles.
 - Include a **maintenance** component on local roads.
 - Improve US 101 **consistent with ODOT** design guidance or other regional planning efforts.

Support Fiscal Responsibility

Plan for a transportation system that is financially viable with consideration for life cycle costs by identifying new funding sources to make local dollars go farther.

- Projects that advance this goal:
 - Build on investments in transportation funded primarily by entities other than the city (state, regional, county).
 - Leverage grant funding opportunities.

Manage Access

Manage access from Highway 101 to Manzanita and the recreational opportunities in the area to minimize cut through traffic and seasonal congestion.

- Projects that advance this goal:
 - Improve **local roadway connections** and/or wayfinding within Manzanita's UGB.
 - Support efforts to **create connections between key destinations** and the commercial core.

Enhance Economic Vibrancy

Support economic vibrancy and reduce parking demand by providing walking, biking, and transit connections to the commercial core.

- Projects that advance this goal:
 - Create **new connections** for active transportation modes on arterials or collectors.
 - Encourage travelers to **walk, bike, or take transit** rather than drive.

Tell Us What You Think!

These are the concerns and priorities that we heard from folks in your community.

What is your top concern?

What is your top priority?

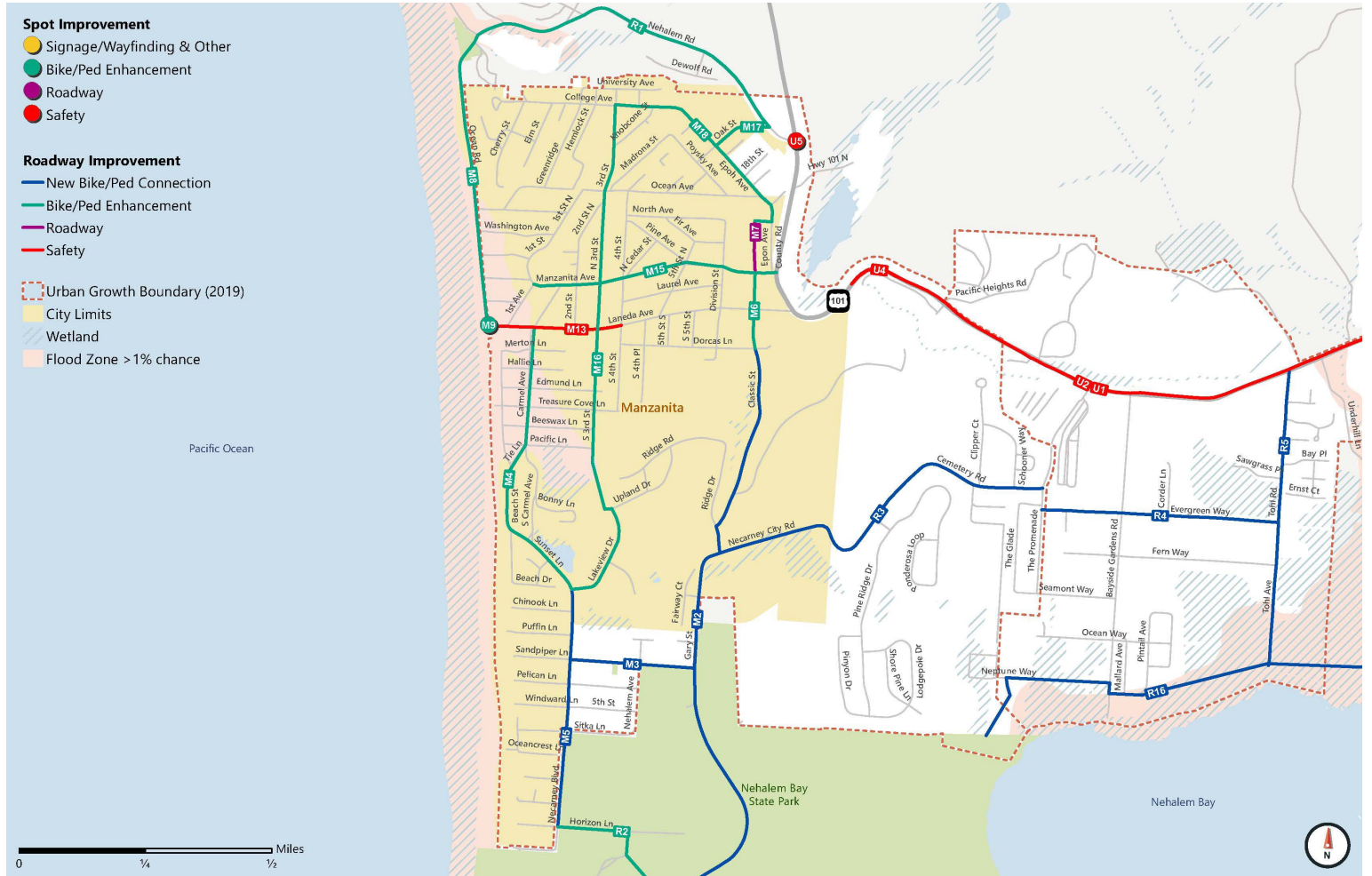


Project Overview

- **97 Total Projects**
- **27 Regional Projects**
 - **Projects located on US 101 (ODOT)**
 - **Projects outside City limits (Tillamook County)**
- **18 Projects in Manzanita**
- **52 Projects in Wheeler & Nehalem**
- **All Projects Advance Multiple Goals**
- **This List Does Not Guarantee Funding**

City of Manzanita Projects

- ✓ Enhance Quality of Life
- ✓ Create Safe Connections
- ✓ Plan for the Future
- ✓ Support Fiscal Responsibility
- ✓ Manage Access
- ✓ Enhance Economic Vibrancy



Quality of Life

Project ID	Project Name & Description	Extents	Category
M1	<p>Complete Trail Connections: Complete trail connections identified in the City's Trail Master Plan to create more local connections for people biking and walking.</p>	Citywide	New Bike/Ped Connection
M2	<p>Classic Street/Gary Street Bicycle & Pedestrian Connection: Construct a separated bicycle and pedestrian facility along Classic Street/Gary Street to provide a connection to Nehalem Bay State Park for people biking and walking.</p>	Dorcas Lane to Nehalem Bay State Park	New Bike/Ped Connection
M16	<p>3rd Street/ Lakeview Drive Bicycle & Pedestrian Enhancements: Enhance 3rd Street/Lakeview Drive with signing and striping to identify space for people walking and biking.</p>	College Avenue to Necarney Blvd	Bike/Ped Enhancement

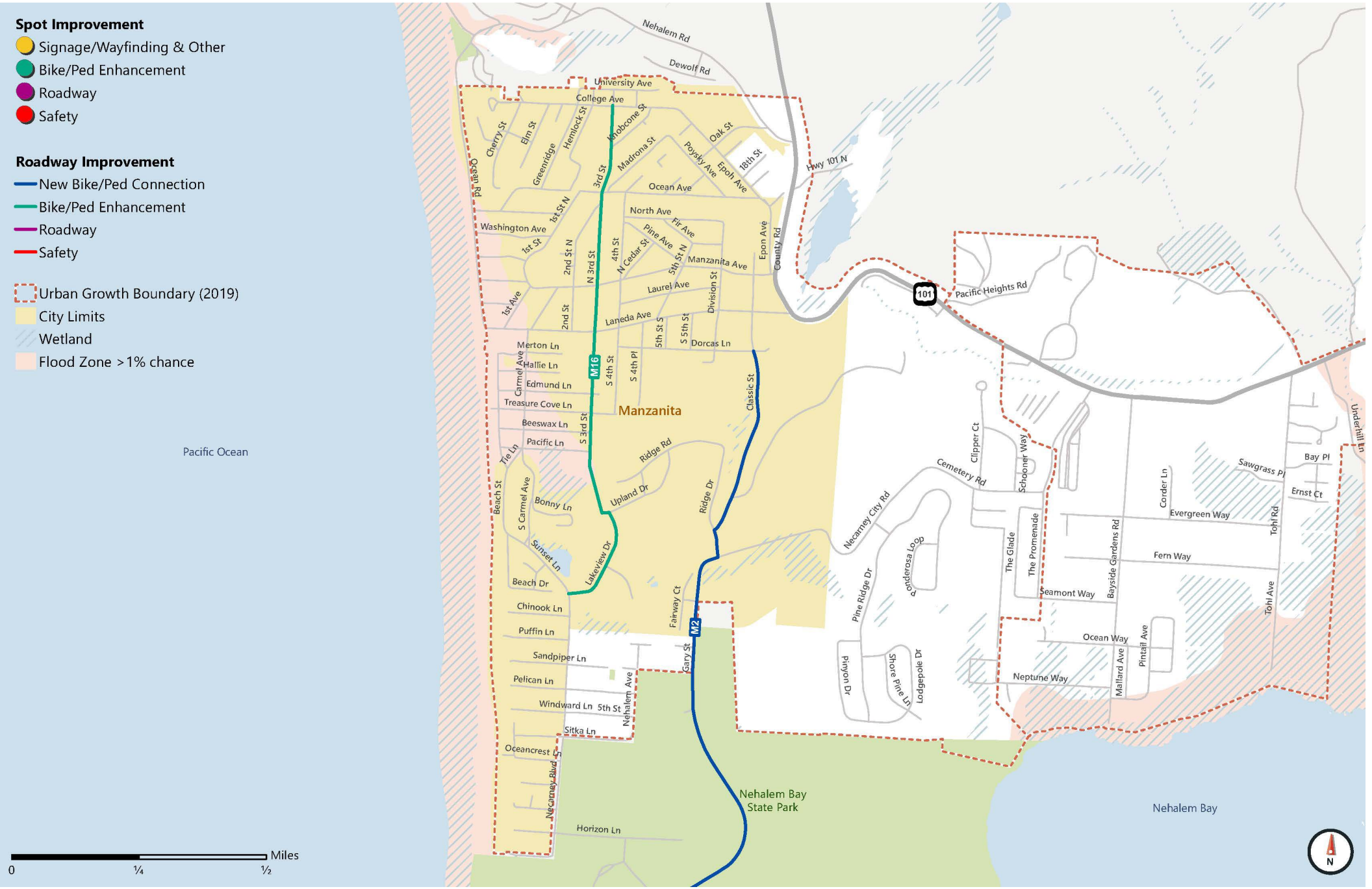
Spot Improvement

- Signage/Wayfinding & Other
- Bike/Ped Enhancement
- Roadway
- Safety

Roadway Improvement

- New Bike/Ped Connection
- Bike/Ped Enhancement
- Roadway
- Safety

- ▭ Urban Growth Boundary (2019)
- ▭ City Limits
- ▭ Wetland
- ▭ Flood Zone > 1% chance



Create Safer Connections

Project ID	Project Name & Description	Extents	Category
M5	Necarney Boulevard Bicycle & Pedestrian Connection: Provide bicycle sharrows and a separated pedestrian space to connect people walking to the existing facility at Lakeview Drive.	Lakeview Drive to Horizon Lane	New Bike/Ped Connection
M13	Laneda Avenue Improvements: Create a connection between the downtown core and the beach by improving Laneda Avenue to feel like a main street through the use of traffic calming measures. This could include painting a solid yellow stripe, providing curb extensions at key intersections, and constructing consistent curbs. This project should also ensure that ADA parking requirements are being met.	4th Street to Ocean Road	Safety
M15	Manzanita Avenue Bicycle & Pedestrian Enhancements: Enhance Manzanita Avenue with signing and striping to identify space for people walking and biking.	US 101 to 1st Avenue	Bike/Ped Enhancement

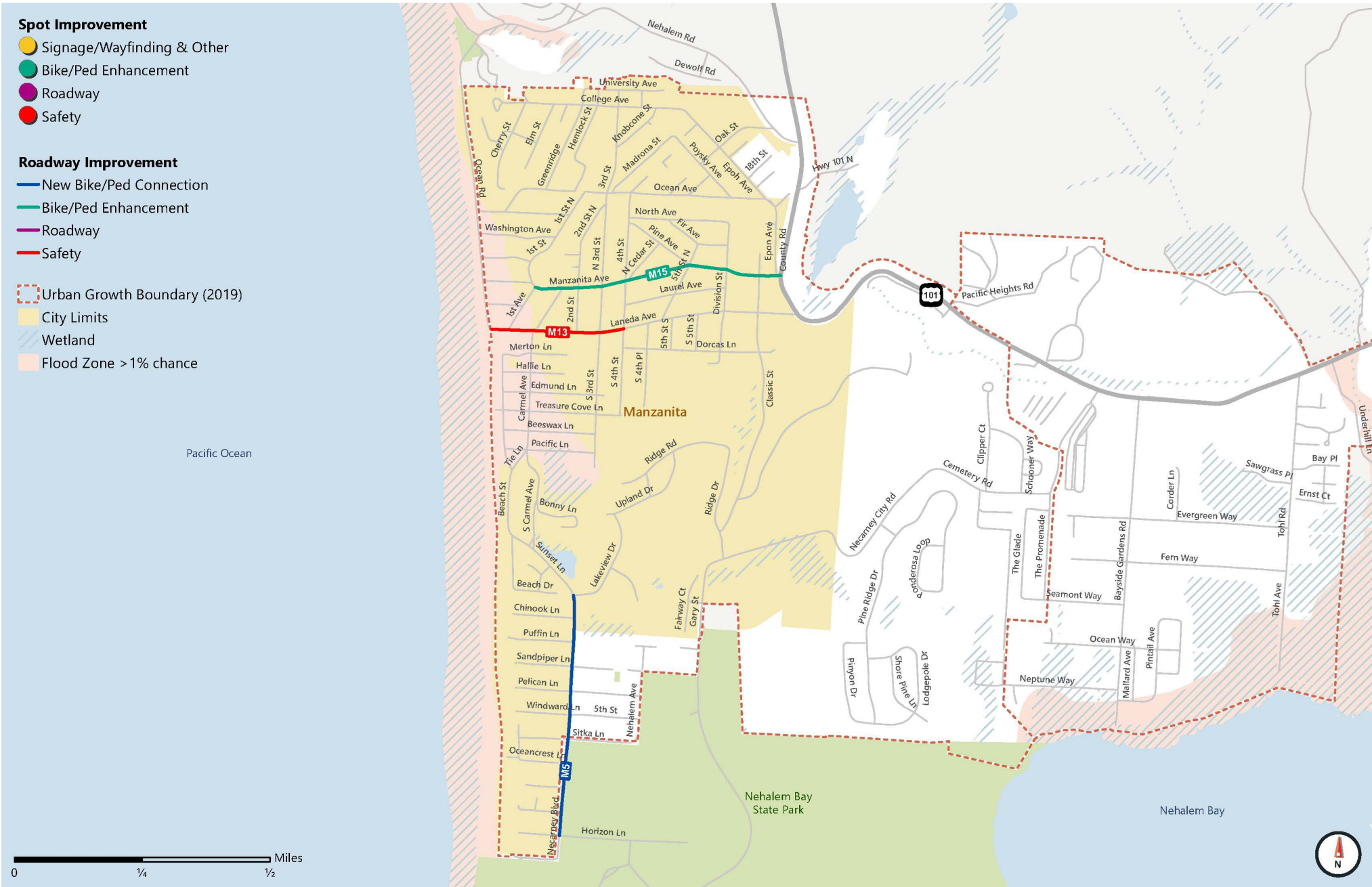
Spot Improvement

- Signage/Wayfinding & Other
- Bike/Ped Enhancement
- Roadway
- Safety

Roadway Improvement

- New Bike/Ped Connection
- Bike/Ped Enhancement
- Roadway
- Safety

- ▭ Urban Growth Boundary (2019)
- ▭ City Limits
- ▭ Wetland
- ▭ Flood Zone > 1% chance



Plan for the Future

Project ID	Project Name & Description	Extents	Category
M3	Sandpiper Lane/Puffin Lane Trail Connection: Construct a multiuse trail with wayfinding to connect people walking and biking between Necarney Boulevard and Gary Street north of Nehalem Bay State Park. Alignment could be along Sandpiper Lane or Puffin Lane (Tillamook County owned), dependent on further analysis to determine feasibility.	Gary Street to Necarney Boulevard	New Bike/Ped Connection
M6	Classic Street Bicycle & Pedestrian Connection: Enhance Classic Street to provide space for people walking and biking and create a connection from downtown core to planned multimodal facilities. Treatments could include constructing consistent shoulders to provide space for people walking and adding sharrows to indicate that bicyclists should use the travel lane.	Manzanita Avenue to Laneda Avenue	Bike/Ped Enhancement
M7	Classic Street Extension: Construct an extension of Classic Street from Manzanita Avenue to North Avenue and provide dedicated space for people walking and biking.	North Avenue to Manzanita Avenue	Roadway

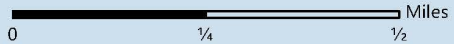
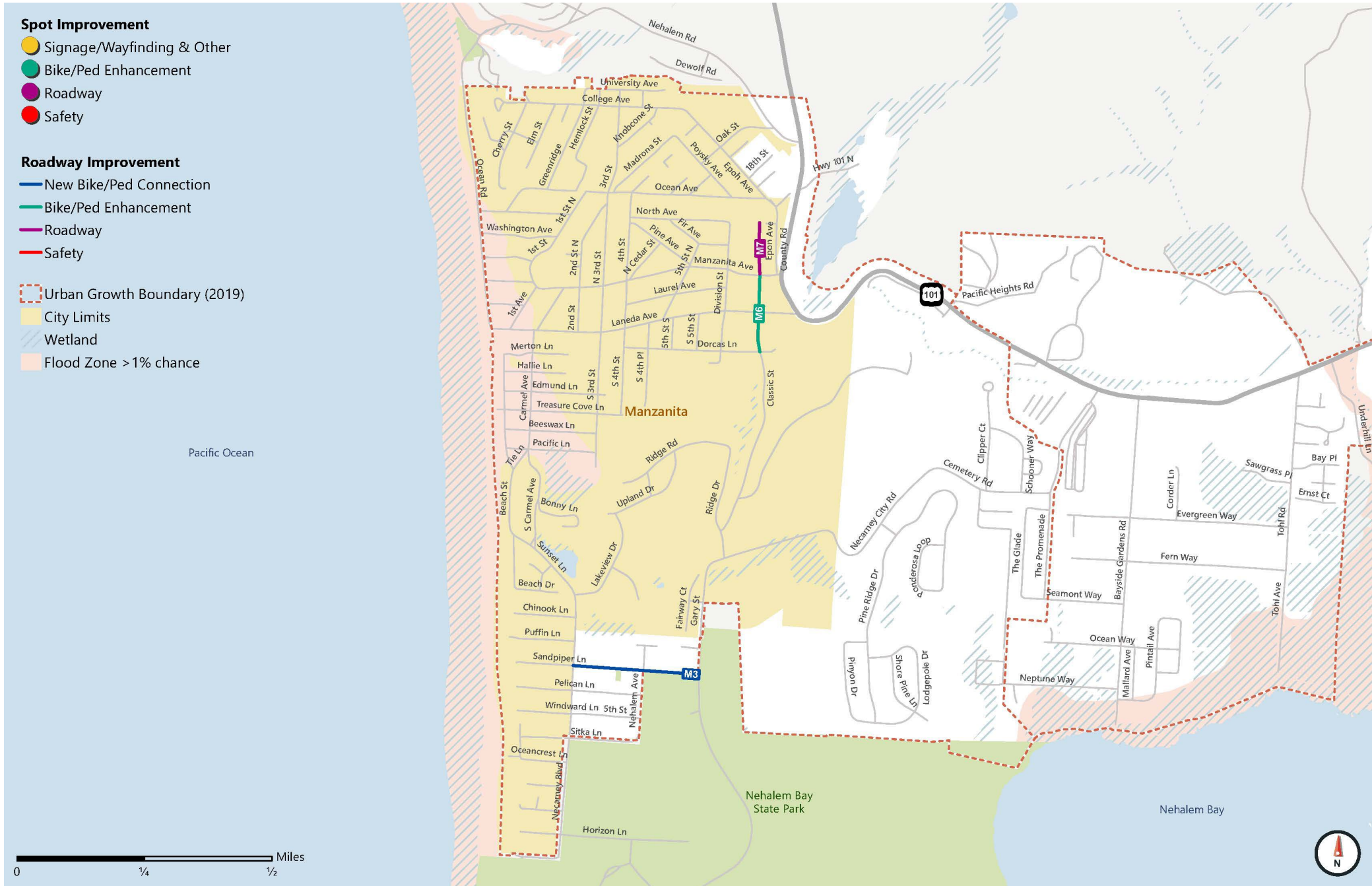
Spot Improvement

- Signage/Wayfinding & Other
- Bike/Ped Enhancement
- Roadway
- Safety

Roadway Improvement

- New Bike/Ped Connection
- Bike/Ped Enhancement
- Roadway
- Safety

- ▭ Urban Growth Boundary (2019)
- ▭ City Limits
- ▭ Wetland
- ▭ Flood Zone > 1% chance



Support Fiscal Responsibility

Project ID	Project Name & Description	Extents	Category
M17	Oak Street Bicycle & Pedestrian Enhancements: Enhance Oak Street with signing and striping to identify space for people walking and biking.	Nehalem Road to Epoh Avenue	Bike/Ped Enhancement
M18	Epoh Avenue Bicycle & Pedestrian Enhancements: Enhance Epoh Avenue with signing and striping to identify space for people walking and biking.	3rd Street to North Avenue	Bike/Ped Enhancement
M19	North Avenue Bicycle & Pedestrian Enhancements: Enhance North Avenue with signing and striping to identify space for people walking and biking.	Epoh Avenue to Classic Street Extension	Bike/Ped Enhancement

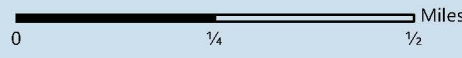
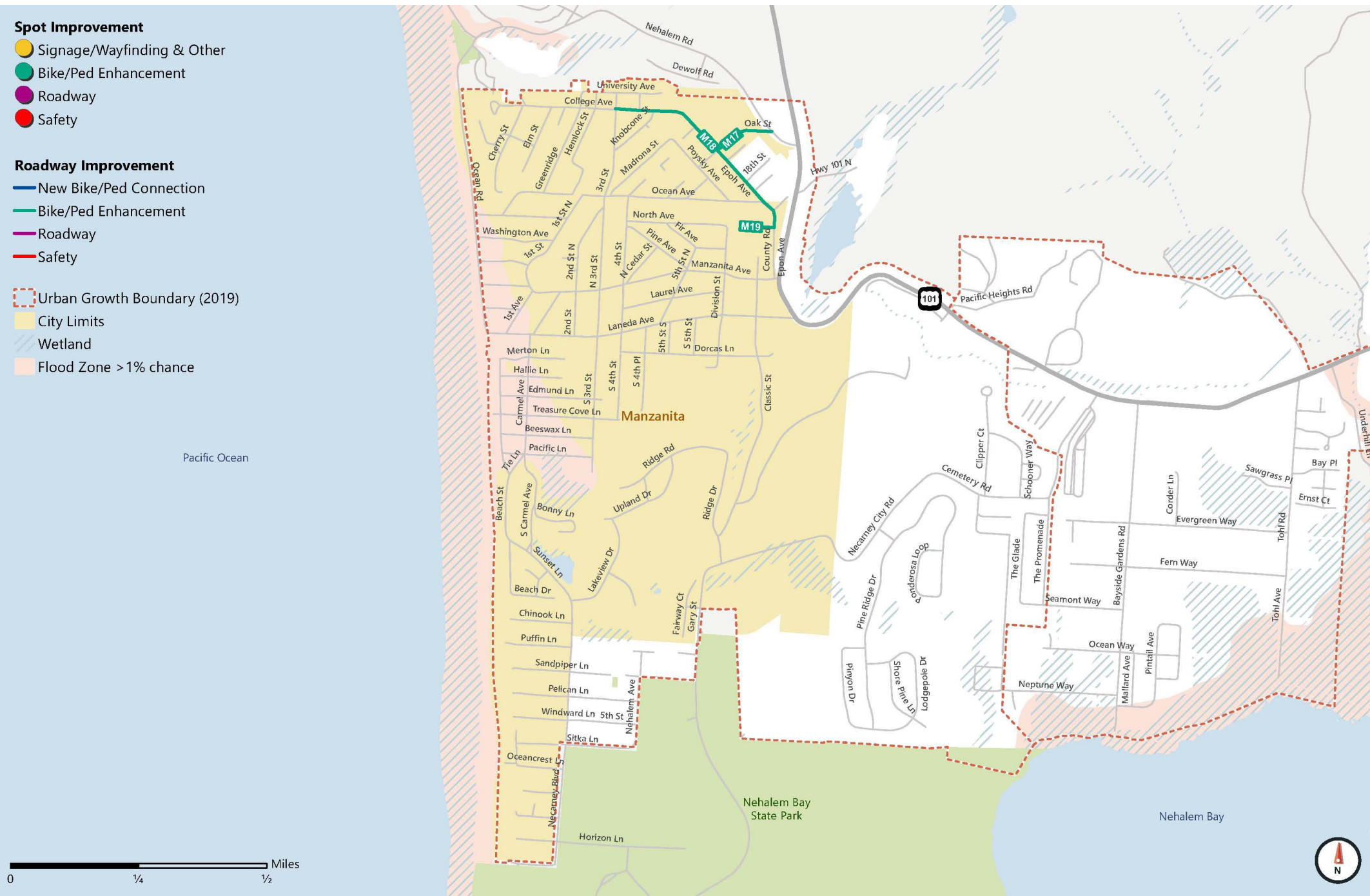
Spot Improvement

- Signage/Wayfinding & Other
- Bike/Ped Enhancement
- Roadway
- Safety

Roadway Improvement

- New Bike/Ped Connection
- Bike/Ped Enhancement
- Roadway
- Safety

- ▭ Urban Growth Boundary (2019)
- ▭ City Limits
- ▭ Wetland
- ▭ Flood Zone > 1% chance



Manage Access

Project ID	Project Name & Description	Extents	Category
M4	Carmel Road Pedestrian Enhancements: Enhance existing two-way bicycle facility to provide dedicated space for people walking.	Laneda Avenue to Lakeview Drive	Bike/Ped Enhancement
M8	Ocean Road Bicycle & Pedestrian Enhancements: Enhance Ocean Avenue with signing and striping to identify space for people walking and biking.	Laneda Avenue to Nehalem Drive	Bike/Ped Enhancement
M9	Ocean Road Crossing Enhancements: Enhance crossing Ocean Road crossing at Laneda Avenue with high-visibility markings and advance signage to alert drivers of crossing.	Laneda Avenue & Ocean Road Intersection	Bike/Ped Enhancement

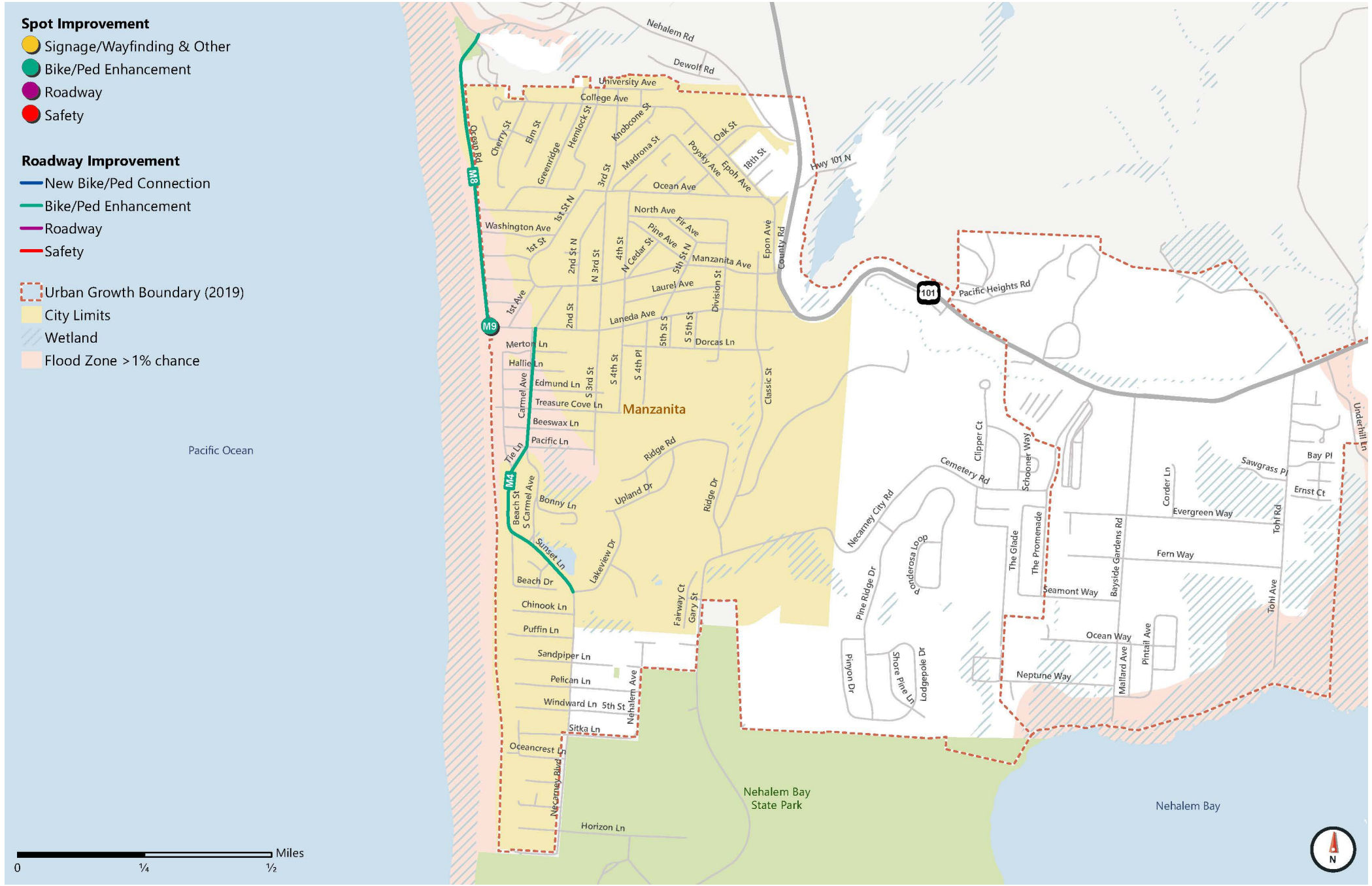
Spot Improvement

- Signage/Wayfinding & Other
- Bike/Ped Enhancement
- Roadway
- Safety

Roadway Improvement

- New Bike/Ped Connection
- Bike/Ped Enhancement
- Roadway
- Safety

- ▭ Urban Growth Boundary (2019)
- ▭ City Limits
- ▭ Wetland
- ▭ Flood Zone >1% chance

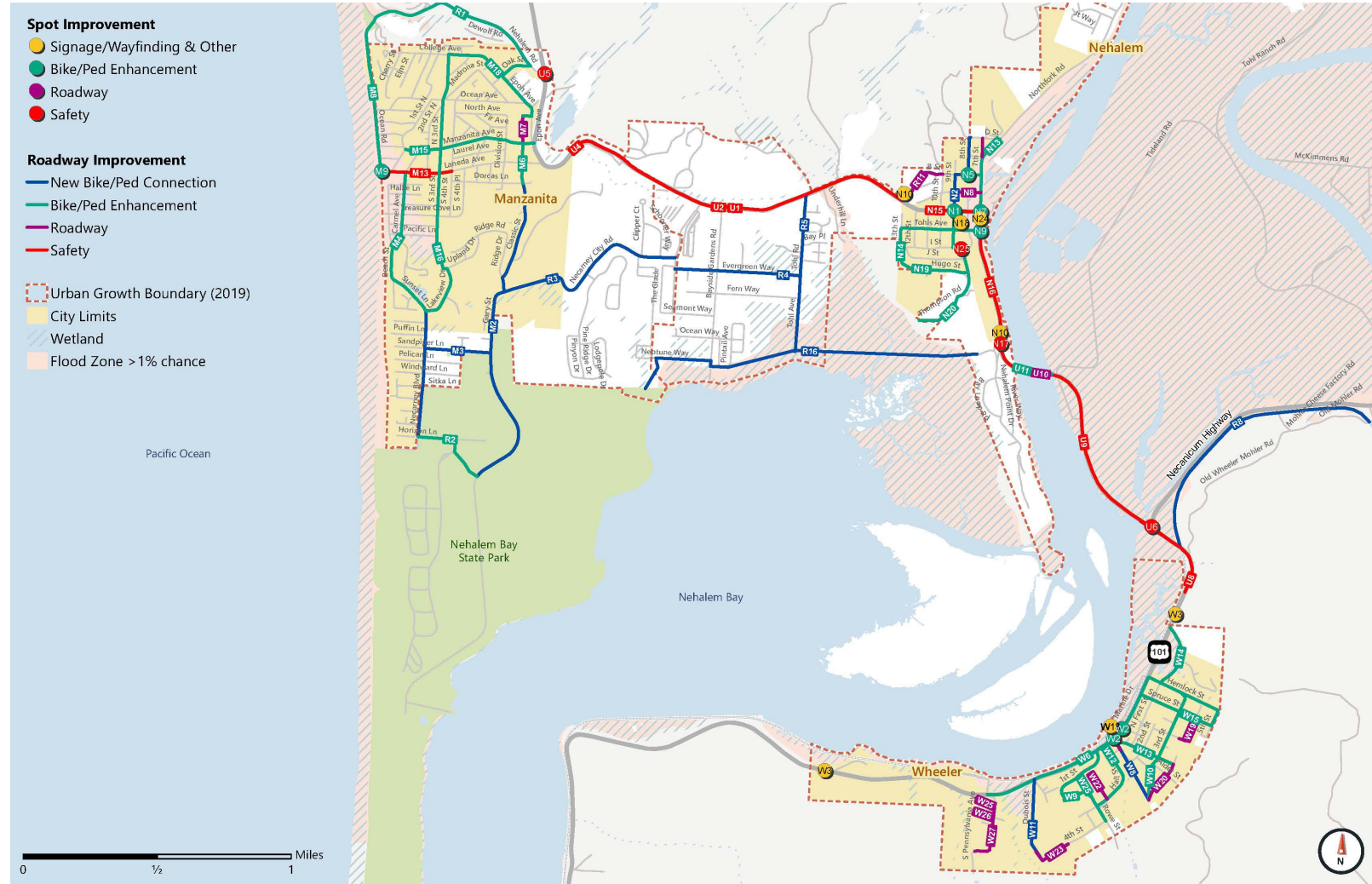


Enhance Economic Vibrancy

Project ID	Project Name & Description	Extents	Category
M10	Bicycle Parking: Provide dedicated areas for bicycle parking near the beach and in the downtown core.	Citywide	Bike/Ped Enhancement
M11	Parking Signage: Provide signage near the beach and downtown core to direct visitors to public parking areas.	Citywide	Signage/Wayfinding
M12	Wayfinding Signs: Provide wayfinding and educational signs in the downtown core and beach to direct visitors to local destinations, enhancing visitors ability to park once. Signage should also include messaging about where pedestrians should walk.	Citywide	Signage/Wayfinding

Regional Projects

- ✓ Enhance Quality of Life
- ✓ Create Safe Connections
- ✓ Plan for the Future
- ✓ Support Fiscal Responsibility



Quality of Life

Project ID	Project Name & Description	Extents	Category
R3	Necarney City Road Trail Connection: Construct a separated multiuse trail to provide a connection for people walking and biking parallel to US 101.	Ridge Drive to Necarney City Drive	New Bike/Ped Connection
R4	Evergreen Way Trail Connection: Construct a multiuse trail to provide a connection for people walking and biking parallel to US 101.	The Promenade to Tohl Avenue	New Bike/Ped Connection
R5	Tohl Avenue Trail Connection: Construct a multiuse trail to provide a connection for people walking and biking to connect to planned facilities and Manzanita.	US 101 to Terminus	New Bike/Ped Connection
R8	Mohler Trail Connection: Provide a multiuse connection from US 101 to Mohler Trail Road along the identified Salmonberry Trail alignment parallel to the railroad tracks.	US 101 to Mohler Cheese Factory Road	New Bike/Ped Connection
R13	Oregon Coast Trail Realignment: Realign the Oregon Coast Trail through Manzanita with more direct access to Nehalem Bay State Park. This project should include wayfinding signage and be coordinated with other enhancements for people walking and biking in the region.	Nehalem Road to Nehalem Bay State Mark	New Bike/Ped Connection
U3	Speed Feedback Signs: Identify locations on US 101 where speed feedback signs may be placed to alert drivers of their speeds.	Regional	Safety
R16	Nehalem Point to Nehalem State Park Bicycle & Pedestrian Connection: Construct a paved trail connecting people walking and biking from Nehalem to Nehalem State Park off US 101.	Nehalem Point to Nehalem State Park	New Bike/Ped Connection

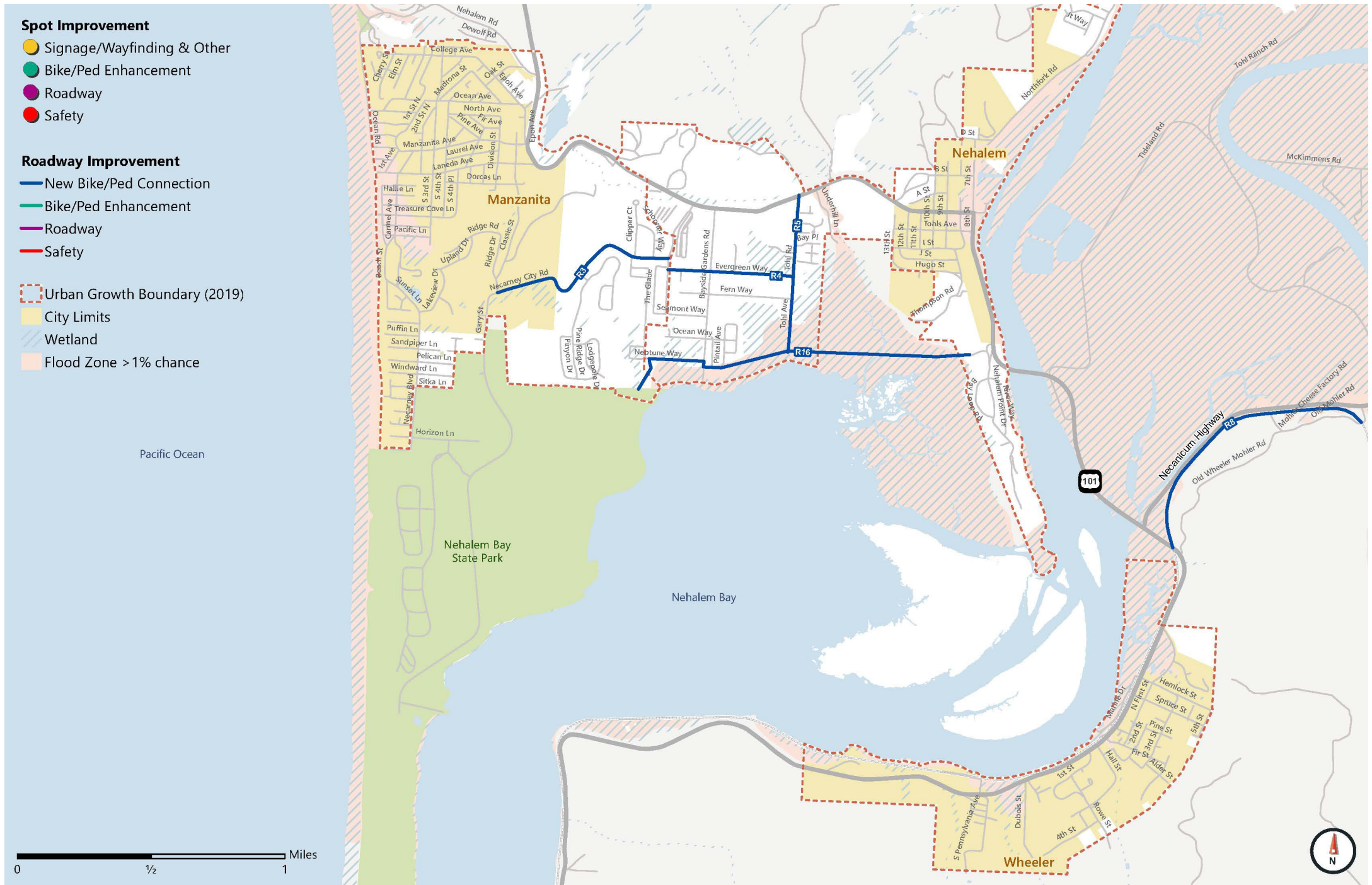
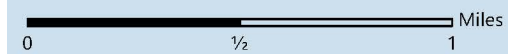
Spot Improvement

- Signage/Wayfinding & Other
- Bike/Ped Enhancement
- Roadway
- Safety

Roadway Improvement

- New Bike/Ped Connection
- Bike/Ped Enhancement
- Roadway
- Safety

- ▭ Urban Growth Boundary (2019)
- ▭ City Limits
- ▭ Wetland
- ▭ Flood Zone >1% chance



Create Safer Connections

Project ID	Project Name & Description	Extents	Category
U1	Widen US 101 Shoulders: Widen shoulders on US 101 to ODOT standard to support bicycle travel.	Manzanita City Limits to Nehalem City Limits	Safety
U2	US 101 Rumble Strips: Add rumble strips and install a safety edge to alert drivers and enhance safety for people biking on US 101.	Manzanita City Limits to Nehalem City Limits	Safety
U4	Enhanced Curve Delineation: Provide enhanced delineation treatments such as chevron signs or delineators to the horizontal curve located between milepost 43.3 and 43.5.	East of Manzanita city limits, approximately mp 43.3 to 43.5	Safety
U6	SR 53 Intersection Advanced Signage: Improve safety at the intersection by installing advanced signage to alert drivers of upcoming intersection.	US 101 near SR 53	Safety
U7	SR 53 Intersection Enhancements: Review turn pockets at SR 53/US 101 intersection to confirm turn pockets meet design standards; identify improvements if needed.	US 101 near SR 53	Safety
U8	Extend US 101 Guardrail and Rumble Strips: Extend the existing guardrail and add rumble strips to improve safety near the curve on US 101.	US 101 curve south of SR 53, approximately mp 46.6 to 46.8	Safety
U9	Widen US 101 Shoulders: Widen shoulders on US 101 to ODOT standard to support bicycle travel.	Nehalem Point Drive to future Salmonberry Trail Crossing location east of SR 53	Safety

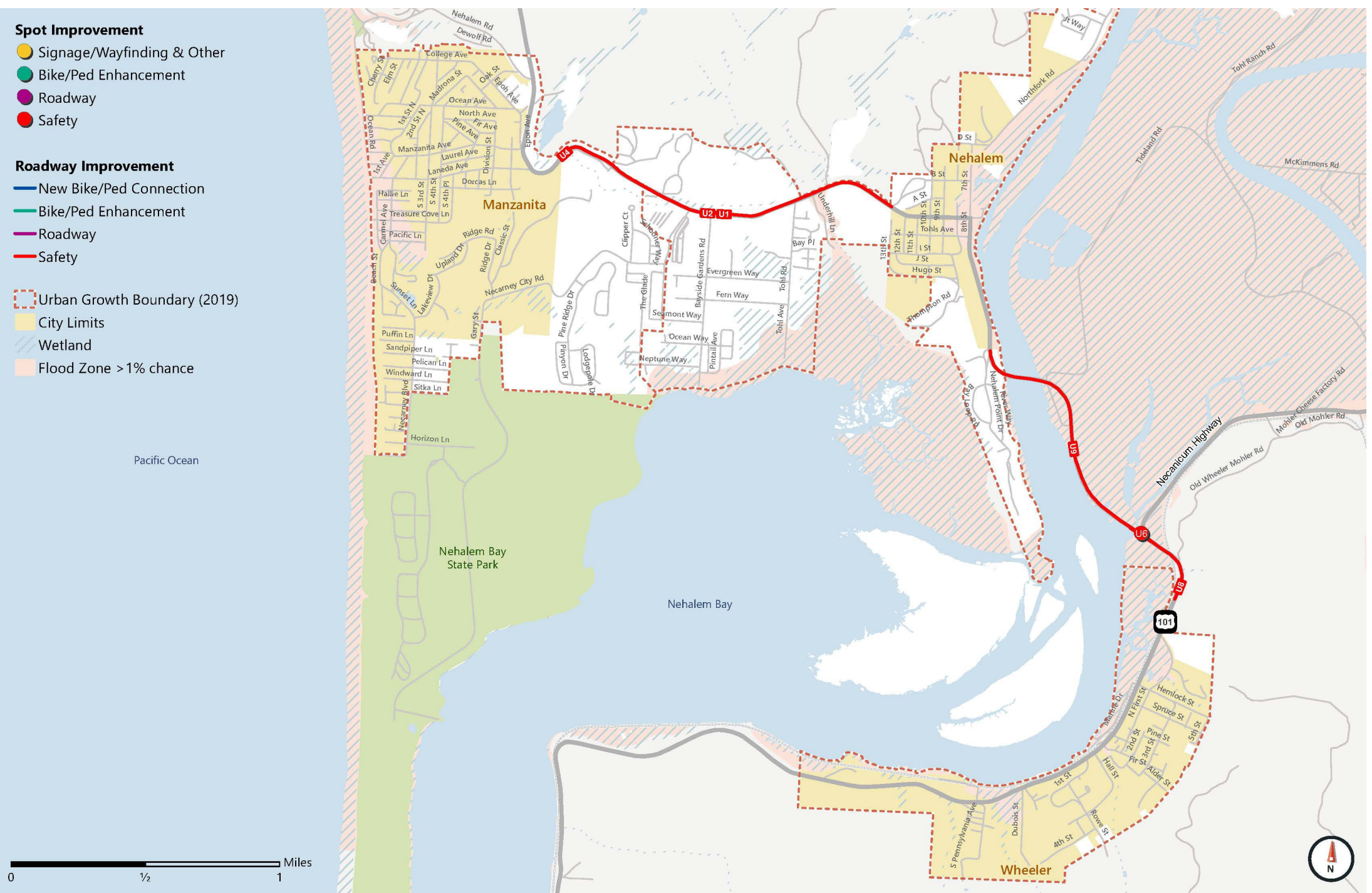
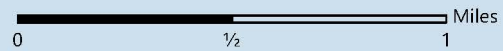
Spot Improvement

- Signage/Wayfinding & Other
- Bike/Ped Enhancement
- Roadway
- Safety

Roadway Improvement

- New Bike/Ped Connection
- Bike/Ped Enhancement
- Roadway
- Safety

- ▭ Urban Growth Boundary (2019)
- ▭ City Limits
- ▭ Wetland
- ▭ Flood Zone >1% chance



Plan for the Future

Project ID	Project Name & Description	Extents	Category
R7	Regional Water Taxi: Explore options to operate a regional water taxi with stops in Nehalem, Wheeler and Nehalem Bay State Park to connect local destinations and enhance tourism.	-	Other
R11	B Street Improvements: Improve the quality of B Street to create a more reliable connection to US 101 during seasonal flooding.	10th Street to US 101	Roadway
R12	Northfork Road Improvements: Improve the pavement quality of Northfork Road between C Street and D Street.	C Street to D Street	Roadway
U5	US 101 & Nehalem Road Intersection Improvements: Provide a dedicated buffered turn lane for southbound drivers turning right to address turning movement crashes.	US 101 & Nehalem Road	Safety
U10	US 101 Bridge Seismic Upgrades: Retrofit the US 101 bridge between Nehalem and Wheeler to the most recent seismic standards.	US 101 Bridge	Roadway
U11	US 101 Bridge Bicycle & Pedestrian Enhancements: Retrofit the US 101 bridge between Nehalem and Wheeler with separated space for bicycles and pedestrians to travel.	US 101 Bridge	Bike/Ped Enhancement
R15	Emergency Planning Coordination: Create a coordinated emergency planning group with representatives from state, county, and local agencies and emergency services.	-	Programmatic

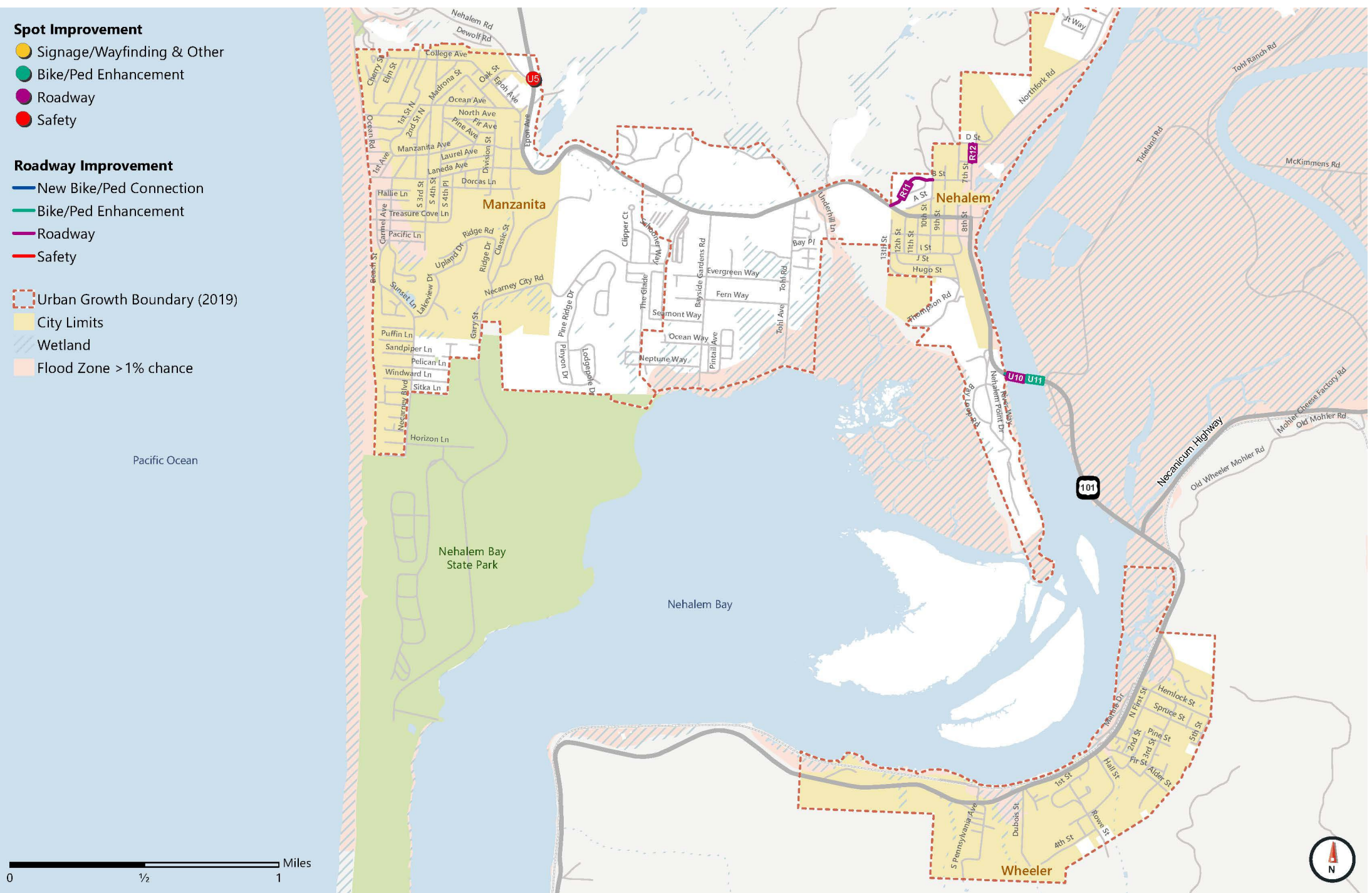
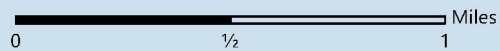
Spot Improvement

- Signage/Wayfinding & Other
- Bike/Ped Enhancement
- Roadway
- Safety

Roadway Improvement

- New Bike/Ped Connection
- Bike/Ped Enhancement
- Roadway
- Safety

- ▭ Urban Growth Boundary (2019)
- ▭ City Limits
- ▭ Wetland
- ▭ Flood Zone >1% chance



Support Fiscal Responsibility

Project ID	Project Name & Description	Extents	Category
R1	Nehalem Road Bicycle & Pedestrian Enhancements: Enhance Nehalem Road with signing and striping to identify space for people walking and biking and create an east/west connection for these users north of the City.	Oak Street to Pacific Boulevard	Bike/Ped Enhancement
R2	Horizon Lane Bicycle & Pedestrian Enhancements: Enhance Horizon Lane with signing and striping to identify space for people walking and biking.	Necarney Blvd to Gary Street	Bike/Ped Enhancement
R6	Regional Circulator/Shuttle: Explore options to create a regional circulator or shuttle to connect visitors and residents traveling between the three communities and creating the ability to park once and visit all local destinations.	-	Transit
R9	US 101 Speed Study: Complete a speed study on US 101 to identify opportunities to lower speeds, particularly near city limits.	-	Programmatic
R10	Enhanced Transit Service: Provide more frequent transit service and consider new stops within each of the Nehalem Bay communities.	-	Transit
R14	Transit Stop Enhancements: Upgrade existing transit stops in the region with shelters, benches, signage, and ADA upgrades.	-	Transit

Spot Improvement

- Signage/Wayfinding & Other
- Bike/Ped Enhancement
- Roadway
- Safety

Roadway Improvement

- New Bike/Ped Connection
- Bike/Ped Enhancement
- Roadway
- Safety

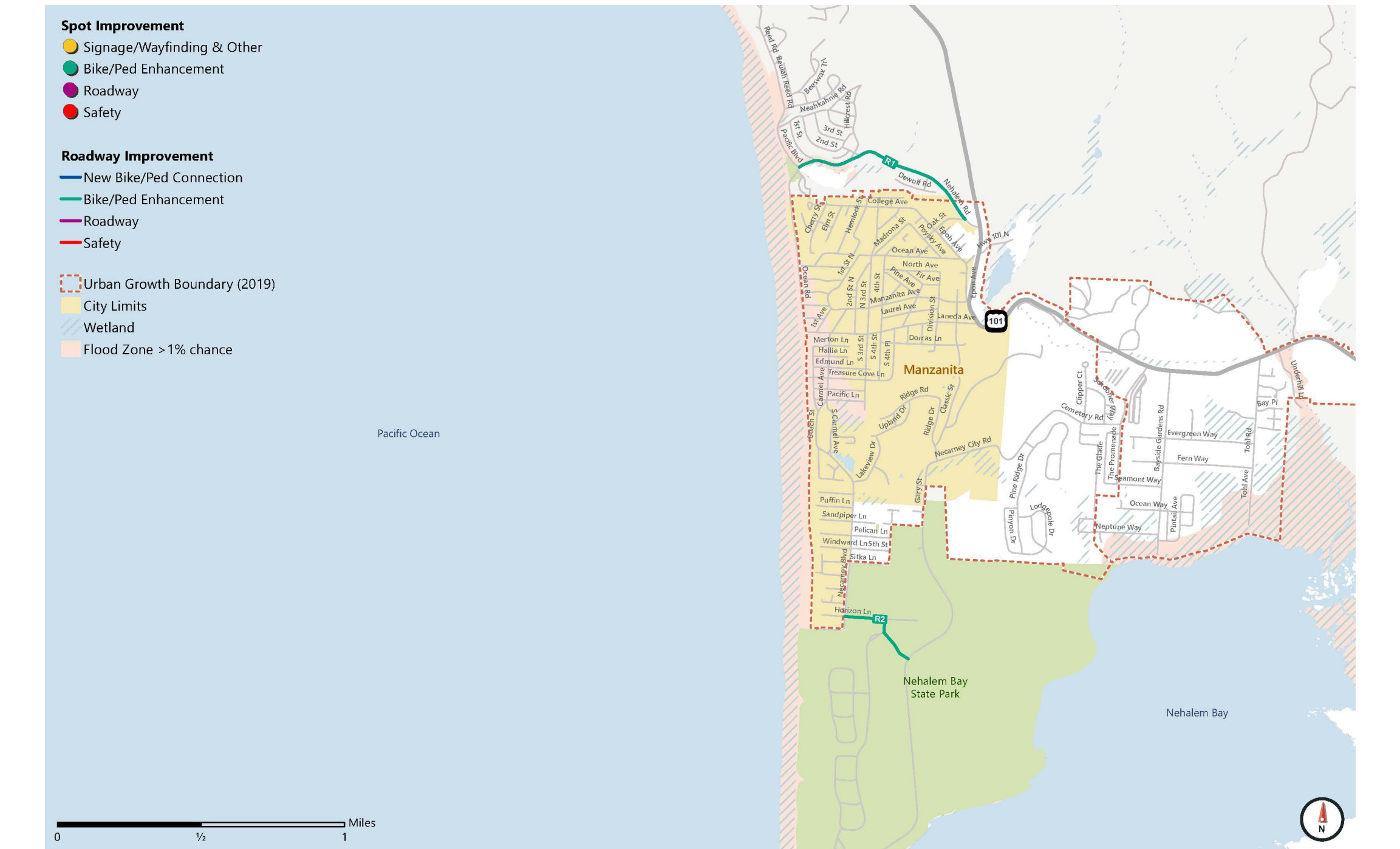
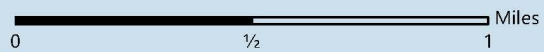
- ▭ Urban Growth Boundary (2019)
- ▭ City Limits
- ▭ Wetland
- ▭ Flood Zone >1% chance

Pacific Ocean

Manzanita

Nehalem Bay State Park

Nehalem Bay



Tell Us What You Think!

These are the solutions we're considering including in the TSP.

What are your top 3 priorities?

What is your lowest priority?



Next Steps

Tell us what you think through February 10th!

Nehalembaytsp.org

- Use Input Gathered from Community Conversations to Inform Prioritized List of Projects
- Develop a Draft TSP
- Community Event in Late Spring
- Council Adoption in Summer

Thank You!

Briana Calhoun

Manzanita Community Lead

Fehr & Peers Portland

b.calhoun@fehrandpeers.com

503-416-7283

Ken Shonkwiler

Senior Region Planner

ODOT Region 2

Kenneth.d.Shonkwiler@odot.state.or.us

503-325-5281