

Nehalem Bay TSP Community Conversations

City of Nehalem
February 3, 2022



Meeting Overview

- Provide an overview of the TSP process.
- Share what we've heard so far and confirm priorities.
- Discuss proposed projects and gather feedback to inform the project lists.
- Overview of next steps and opportunities for input.

What We Want to Hear from You...

- What is your top concern related to the transportation system?
- Are we missing any priorities?
- Which three projects are your top priorities? Why?
- What is missing?
- What outcomes do you want to see?

TSP Overview

- **TSP 101**
- **TSP Milestones & Where We Are**
- **What We've Heard**
- **Community Goals & Priorities**

TSP 101

A realistic plan that results in action

A TSP provides a comprehensive, multimodal picture of how the existing and future transportation system meets the needs of its users.

- ODOT TSP Guidelines



TSP 101

The TSP will:

- Develop transportation networks for all users – drivers, transit riders, walkers and bicyclists.
- Predict how well the system will work in the future and suggest improvements.
- Establish new goals and policies to guide City decision-making.
- Develop a prioritized list of transportation projects to support bicyclists, pedestrians, transit riders, cars, and safety.
- Make recommendations about how to pay for improvements.

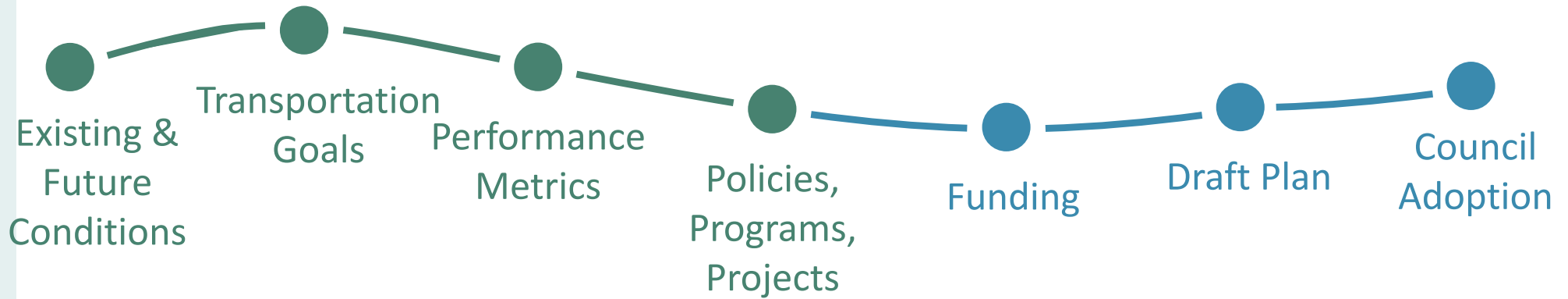


TSP 101

What will make the TSP Successful?

- A clear, consistent vision
- Goals & performance measures that reflect community goals
- Policies, programs, and projects that reflect existing work and future needs
- Clear direction for staff and Council

The TSP Process



Community Engagement



How do we make transportation better in Nehalem Bay?

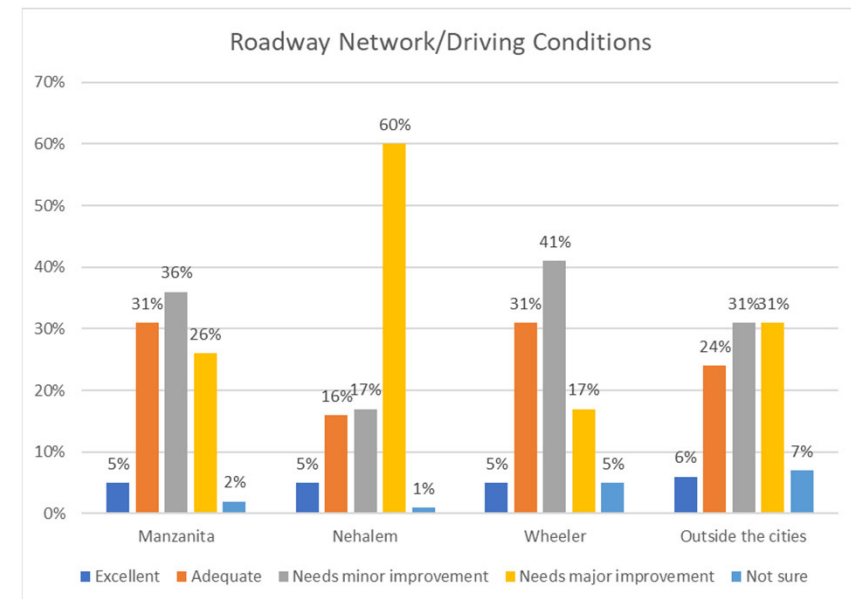
The Cities of Manzanita, Nehalem, Wheeler, and the Oregon Department of Transportation are developing a joint Transportation System Plan (TSP) for Nehalem Bay.

Now through August 15th, you can participate in our online open house to give us your ideas for improving transportation in our region.

Visit nehalembaytsp.org to take a survey and use an interactive map to tell us what you know.

What We Heard from Nehalem

- Safety concerns at US 101 and 7th Street
- Need for safe bike/ped facilities along or separate from major roads
- Congestion near the post office
- Limited visibility on US 101
- Limited Parking



Why set TSP Goals?

What is the purpose of the TSP goals?

- Reflect each community's **values and vision** for the future
- Shape transportation **performance measures**
- Shape how **projects** are developed and prioritized



Quality of Life

Create a transportation system that provides equitable multimodal access for underserved and vulnerable populations and balances the needs of local travelers and regional through-traffic.

- Projects that advance this goal:
 - Improve access for **underserved or vulnerable populations**.
 - Improve a route predominately used by **local travelers** off US 101.
 - Improve the experience of people **traveling through** Nehalem Bay.

Create Safe Connections

Create safer connections between the Nehalem Bay communities for people walking, biking, or using other non-auto modes and identify strategies to reduce crashes for all users when traveling on US 101.

- Projects that advance this goal:
 - Address a location with a history of fatal/severe **injury crashes** and/or **bike/ped crashes**.
 - Create **new connections** off US 101 between Nehalem Bay communities.
 - Include a traffic calming element aimed at **slowing vehicle traffic** to improve safety and comfort for active transportation users.

Plan for the Future

Collaborate with ODOT and Tillamook County to create a transportation system that is resilient to extreme weather events, able to safely accommodate evacuation and recovery efforts, and consistent with the goals and objectives of each City, Tillamook County, and the state.

- Projects that advance this goal:
 - Maintain or rebuild **critical infrastructure**; or improve access for emergency vehicles.
 - Include a **maintenance** component on local roads.
 - Improve US 101 **consistent with ODOT** design guidance or other regional planning efforts.

Support Fiscal Responsibility

Plan for a transportation system that is financially viable with consideration for life cycle costs by identifying new funding sources to make local dollars go farther.

- Projects that advance this goal:
 - Build on investments in transportation funded primarily by entities other than the city (state, regional, county).
 - Leverage grant funding opportunities.

Connect Local Destinations

- Increase connectivity and fill infrastructure gaps for people walking and biking to access key destinations such as schools, restaurants, and the commercial core.
- Projects that advance this goal:
 - Improve **safe access** to school and recreational centers.
 - Create **new connections** for active transportation modes on local roadways.

Access to the Natural Environment

- Increase access to recreational areas and water-based travel options while protecting the natural environment.
- Projects that advance this goal:
 - Improve **walking, biking, or watercraft access** to natural areas and/or parks.
 - Provide wayfinding signage to **connect travelers** to natural areas and/or parks.

Tell Us What You Think!

These are the concerns and priorities that we heard from folks in your community.

What is your top concern?

What is your top priority?

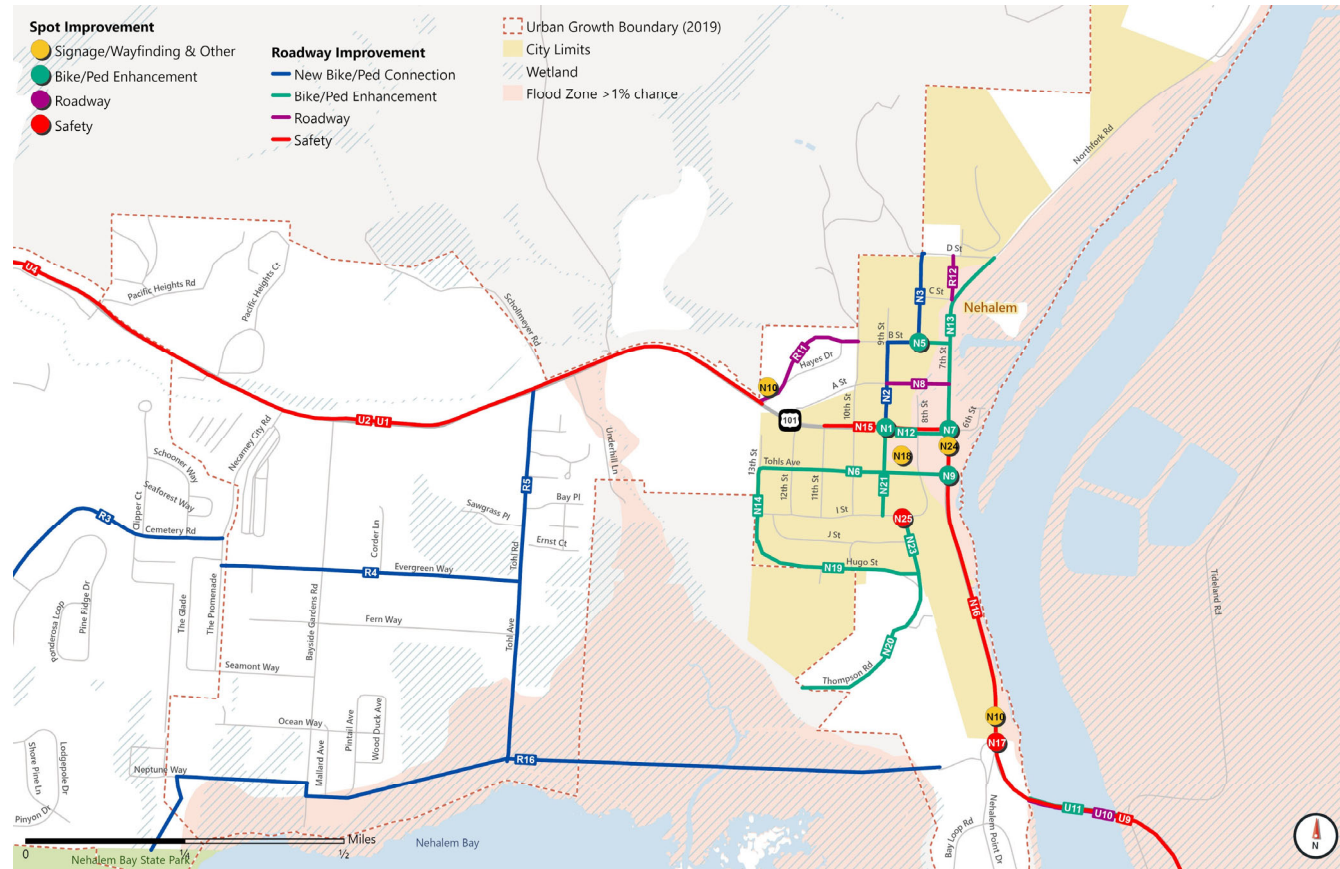


Project Overview

- **97 Total Projects**
- **27 Regional Projects**
 - Projects located on US 101 (ODOT)
 - Projects outside City limits (Tillamook County)
- **25 Projects in Nehalem**
- **45 Projects in Wheeler & Manzanita**
- **All Projects Advance Multiple Goals**
- **This List Does Not Guarantee Funding**

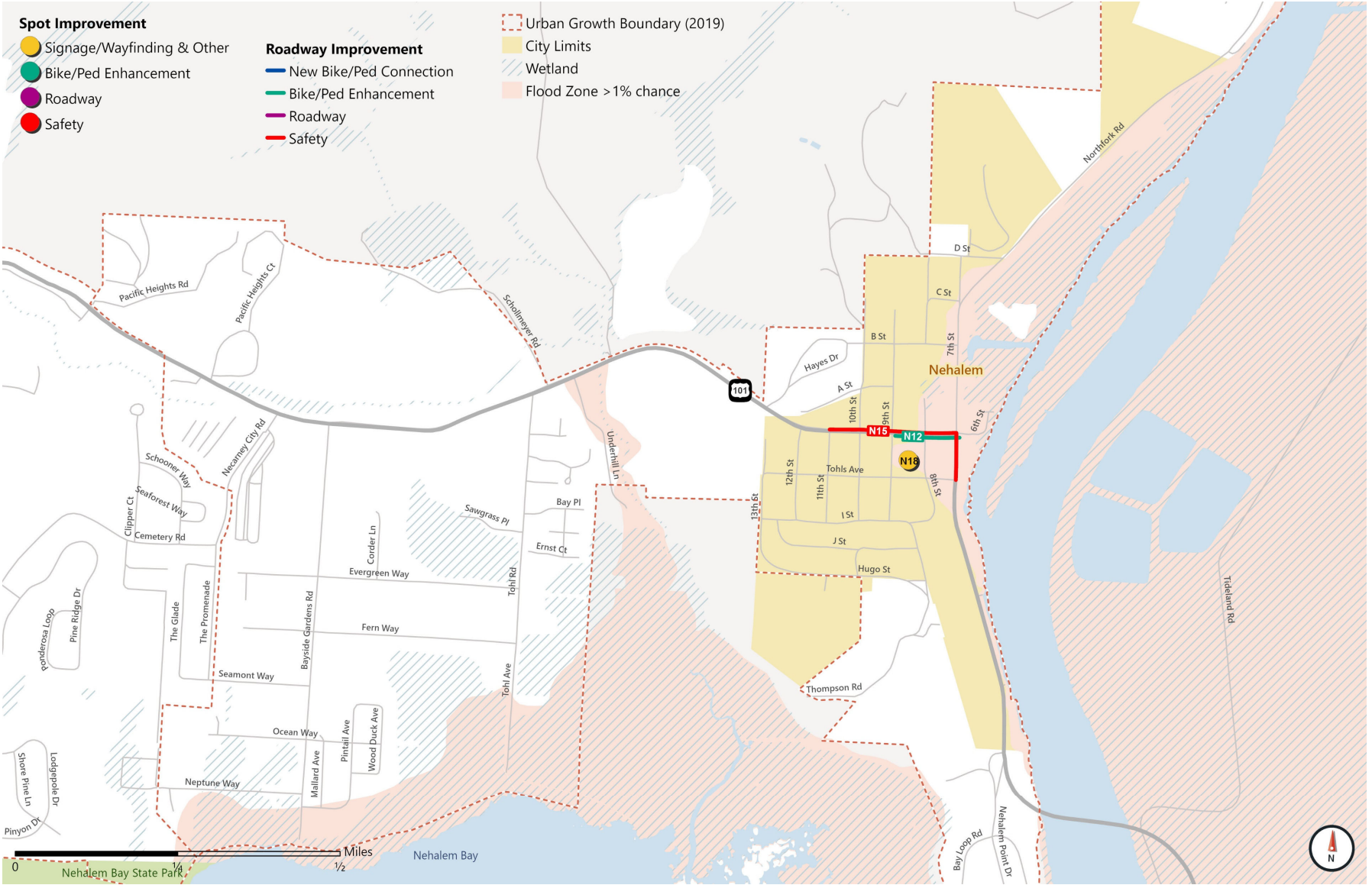
City of Nehalem Projects

- ✓ Enhance Quality of Life
- ✓ Create Safe Connections
- ✓ Plan for the Future
- ✓ Support Fiscal Responsibility
- ✓ Connect Local Destinations
- ✓ Access to the Natural Environment



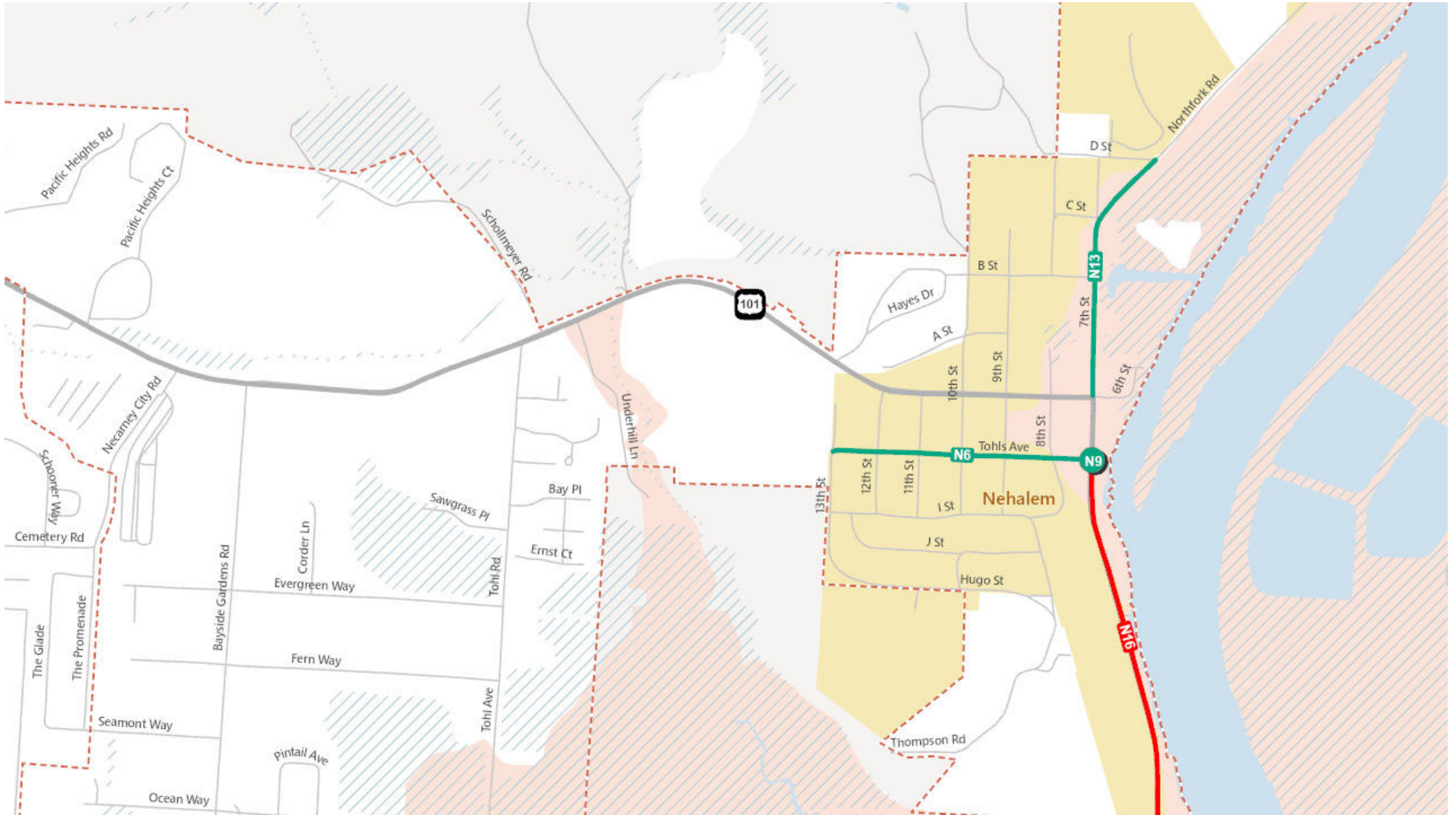
Quality of Life

Project ID	Project Name & Description	Extents	Category
N11	Provide Local Wayfinding: Provide wayfinding signs to direct visitors to downtown core, parking, potential circulators or transit stops, and docks.	Citywide	Signage/Wayfinding
N12	Improve US 101 Sidewalks: Improve access for people of all ages and abilities by improving sidewalks on US 101, including locations not currently meeting ADA standards.	US 101 to 10th Street	Bike/Ped Enhancement
N15	US 101 Traffic Calming: Use improvements that enhance the quality of the street as a "main street" to slow vehicle traffic and make the street more comfortable for people walking and biking. Improvements could include curb extensions, landscaping, planters, and pedestrian scale lighting.	11th Street to south of Thols Avenue	Safety
N18	Shared Parking: Create a shared parking lot in the existing lot just south of US 101 on 9th Street including wayfinding signage to direct visitors to parking.	9th Street	Other



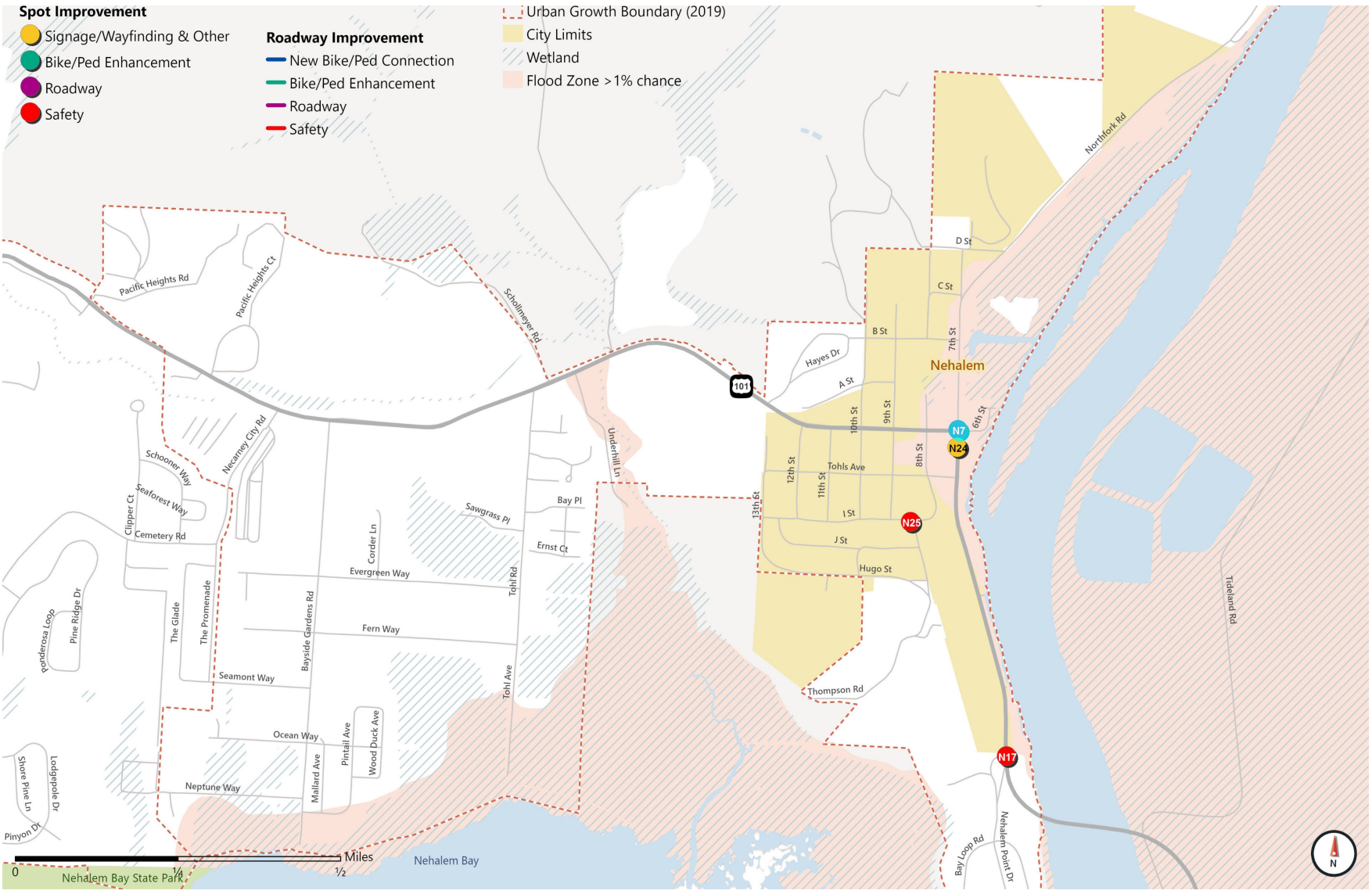
Create Safer Connections

Project ID	Project Name & Description	Extents	Category
N6	Tohls Avenue Bicycle & Pedestrian Enhancements: Enhance Tohls Avenue with signing and striping to identify space for people walking and biking.	US 101 to 13th Street	Bike/Ped Enhancement
N9	US 101 & Tohls Avenue Crossing Enhancements: Create a safer and more comfortable crossing by providing crossing enhancements such as a high-visibility crosswalk and curb extensions/bollards/planters.	-	Bike/Ped Enhancement
N13	7th Street Bicycle & Pedestrian Enhancements: Enhance 7th Street with signing and striping to identify space for people walking and biking.	US 101 to D Street	Bike/Ped Enhancement
N16	US 101 Safety Improvements south of Tohls Avenue: To create more space for people biking, widen the shoulder on US 101 to 5 feet where feasible.	South of Tohls Avenue to Nehalem City Limits	Safety



Plan for the Future

Project ID	Project Name & Description	Extents	Category
N7b	US 101 & 7th Street Mini-Roundabout: Construct a roundabout to provide a long-term solution to improve operations and delay at the intersection.	-	Roadway
N17	US 101 & Nehalem Point Drive Intersection Improvements: Provide a two-way left-turn lane for drivers turning left onto Nehalem Point Drive and adjacent driveways to address crashes occurring at this intersection.	US 101 & Nehalem Point Drive	Safety
N24	US 101 & 7th Street Camera: Install a traffic camera at the intersection of US 101 and 7th Street to allow agencies and travelers to check for flooding at the intersection.	-	Other
N25	I Street & 9th Street Safety Improvements: Create a safer crossing by providing crossing enhancements such as crosswalks and pedestrian scale lighting to make people walking more visible.	-	Safety



7th & US 101 - The Problem

Today.....

- Congestion is high
- The configuration is unfamiliar to visitors
- Flooding closes the intersection
- Four crashes from 2016 to 2020
- Right-turn conflicts with pedestrians crossing

In the future....

- Congestion will get worse
- Increase in traffic could result in more crashes
- Flooding likely to occur more frequently

7th & US 101 – Potential Projects

All-Way-Stop	One-Way Couplet	Roundabout	Signal
<ul style="list-style-type: none"> ✓ Crossing improvements for pedestrians ✗ Substantial increase in delay ✗ Doesn't meet criteria for installation 	<ul style="list-style-type: none"> ✗ Impact to downtown ✗ No community support ✗ No substantial changes to delay 	<ul style="list-style-type: none"> ✓ More comfortable crossings ✓ Decreases delay ✓ No criteria for installation ✓ May reduce crashes ✗ Size would impact surrounding area 	<ul style="list-style-type: none"> ✓ Crossing enhancements ✓ Decreases delay ✗ Doesn't meet criteria for installation

7th & US 101 – Mini-Roundabout

What is a mini-roundabout?

- A smaller roundabout.
- Trucks can drive over the center island.
- Crosswalks for people crossing.
- Operates the same as a typical roundabout.



7th & US 101 – Mini-Roundabout

Why a mini-roundabout?

- They are smaller.
- Would reduce delay at the intersection.
- Still eliminate conflict points for people walking.
- May be less impacted by flooding.



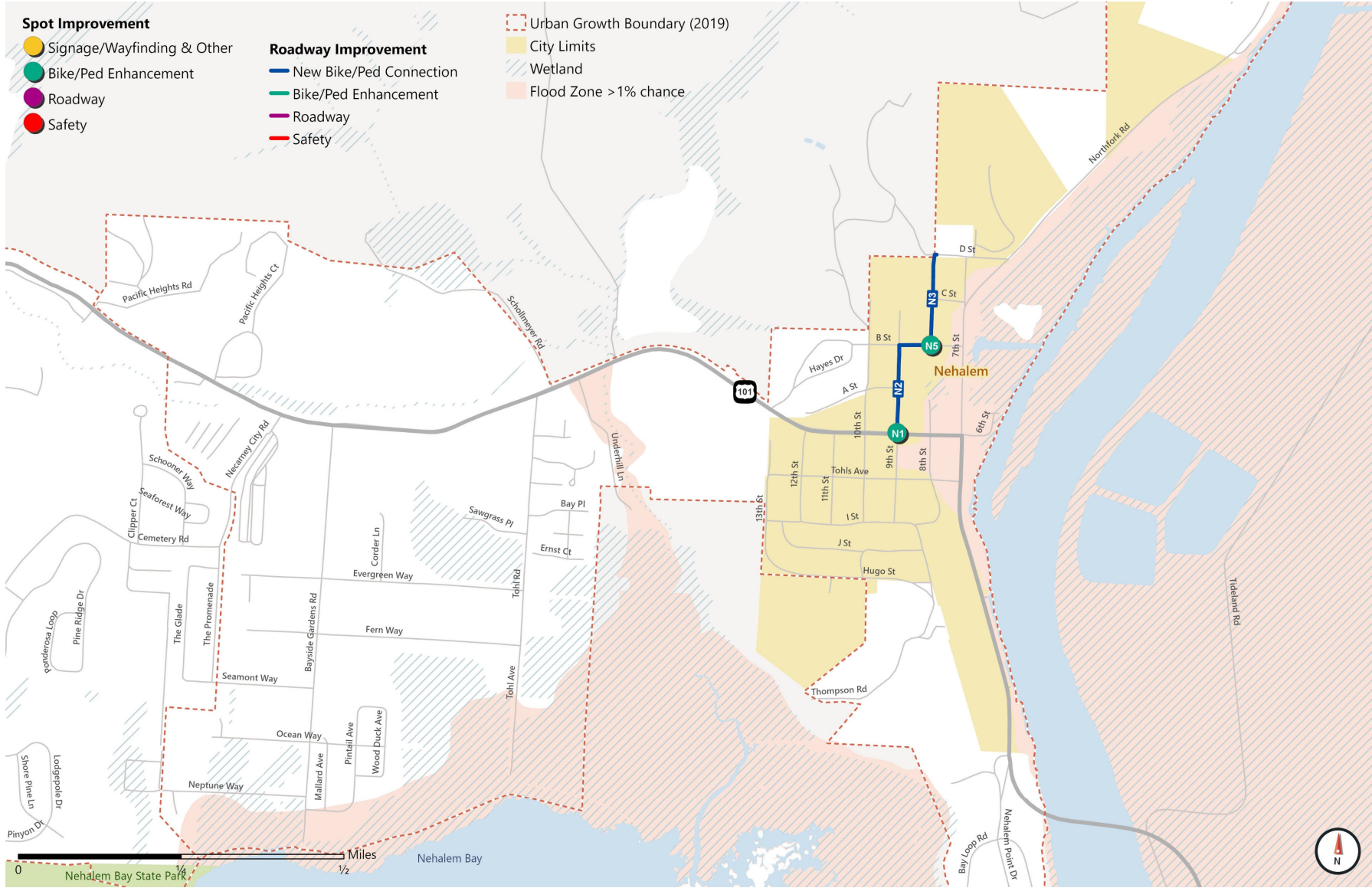
Example: Mini-Roundabout in Cornelius, OR

Support Fiscal Responsibility

Project ID	Project Name & Description	Extents	Category
N7a	US 101 & 7th Street Intersection Improvements: Enhance signage to alert visitors of the non-standard configuration and enhance crosswalks to improve safety for people crossing.	-	Safety
N10	Enhance Nehalem Gateways: Enhance existing gateways with improved lighting and landscaping to alert drivers that they have entered city limits.	Nehalem Bay City Limits	Signage/Wayfinding
N21	9th Street Bicycle & Pedestrian Enhancements: Enhance 9th Street with signing and striping to identify space for people walking and biking.	US 101 to 1st Street	Bike/Ped Enhancement
N22	B Street Bicycle & Pedestrian Enhancements: Enhance B Street with signing and striping to identify space for people walking and biking.	7th Street to 8th Street	Bike/Ped Enhancement

Connect Local Destinations

Project ID	Project Name & Description	Extents	Category
N1	9th Street Crossing Enhancements: Enhance pedestrian visibility and shorten the crossing distance by providing pedestrian-scale lighting, curb extensions, bollards, or planters.	US 101 & 9th Street Intersection	Bike/Ped Enhancement
N2	9th Street Pedestrian Facilities: Connect people walking on 9th Street to NCRD and the schools by constructing sidewalks.	B Street to US 101	New Bike/Ped Connection
N3	8th Street Pedestrian Facilities: Connect people walking on 8th Street to NCRD and the schools by constructing sidewalks or providing a wide shoulder.	Grade School to B Street	New Bike/Ped Connection
N4	B Street Pedestrian Facilities: Connect people walking on B Street to NCRD and the schools by constructing sidewalks or providing a wide shoulder.	9th Street to 8th Street	New Bike/Ped Connection
N5	B Street Crossing: Alert drivers of school children crossing by providing high-visibility crosswalks.	B Street & 8th Street Intersection	Bike/Ped Enhancement



Access to the Natural Environment

Project ID	Project Name & Description	Extents	Category
N14	13th Street Bicycle & Pedestrian Facilities: Enhance 13th Street with signing and striping to identify space for people walking and biking and to create a connection to planned trails.	Hugo Street to Tohls Avenue	Bike/Ped Enhancement
N19	Hugo Street Bicycle & Pedestrian Enhancements: Enhance Hugo Street with signing and striping to identify space for people walking and biking and to create a connection to planned trails.	13th Street to 9th Street	Bike/Ped Enhancement
N20	Thompson Road Bicycle & Pedestrian Enhancements: Enhance Thompson Street with signing and striping to identify space for people walking and biking and to create a connection to planned trails.	Terminus to 9th Street	Bike/Ped Enhancement
N23	8th/9th Street Bicycle & Pedestrian Enhancements: Enhance 8th and 9th Street with signing and striping to identify space for people walking and biking.	I Street to Hugo Street	Bike/Ped Enhancement

Spot Improvement

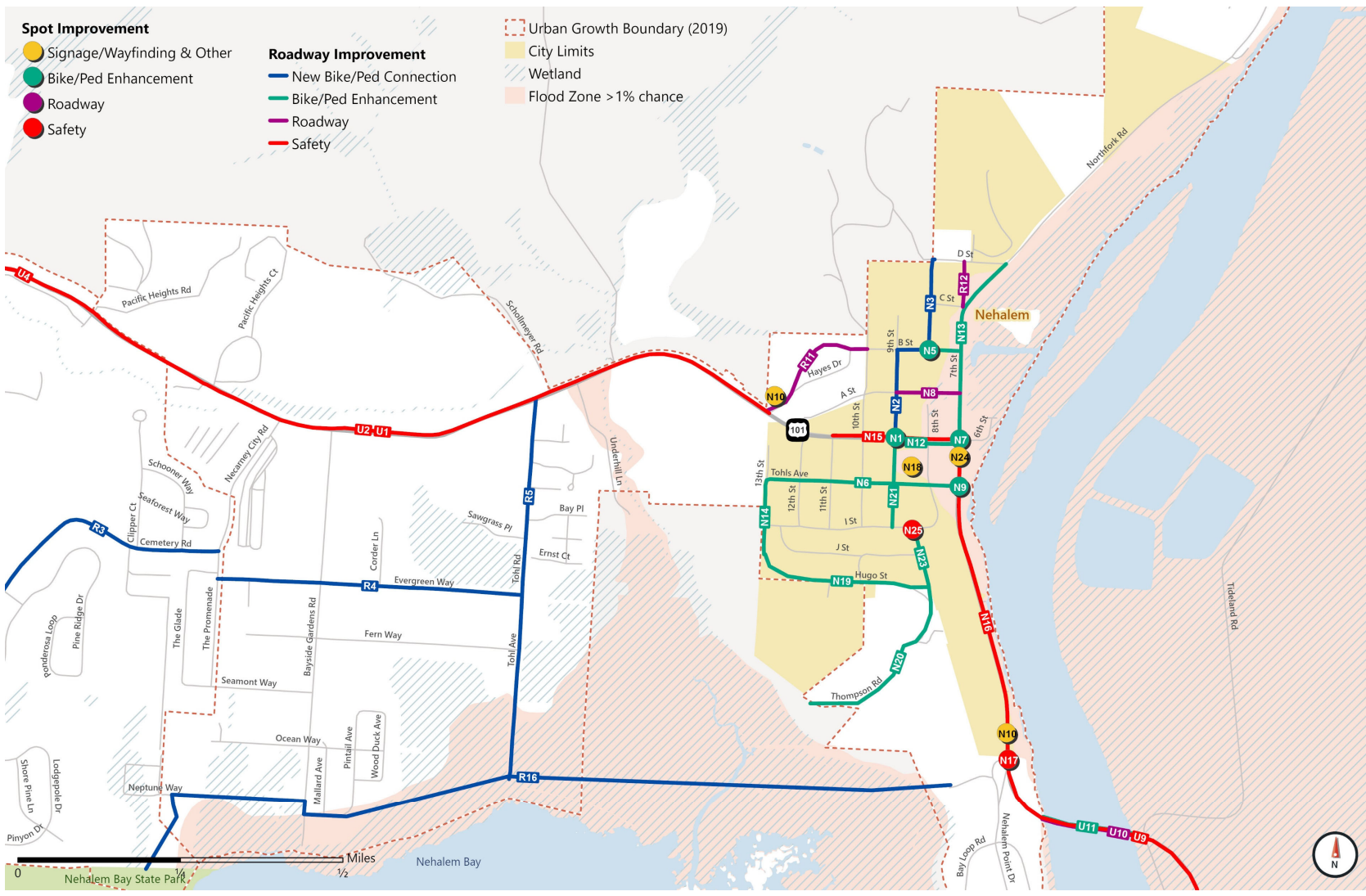
- Signage/Wayfinding & Other
- Bike/Ped Enhancement
- Roadway
- Safety

Roadway Improvement

- New Bike/Ped Connection
- Bike/Ped Enhancement
- Roadway
- Safety

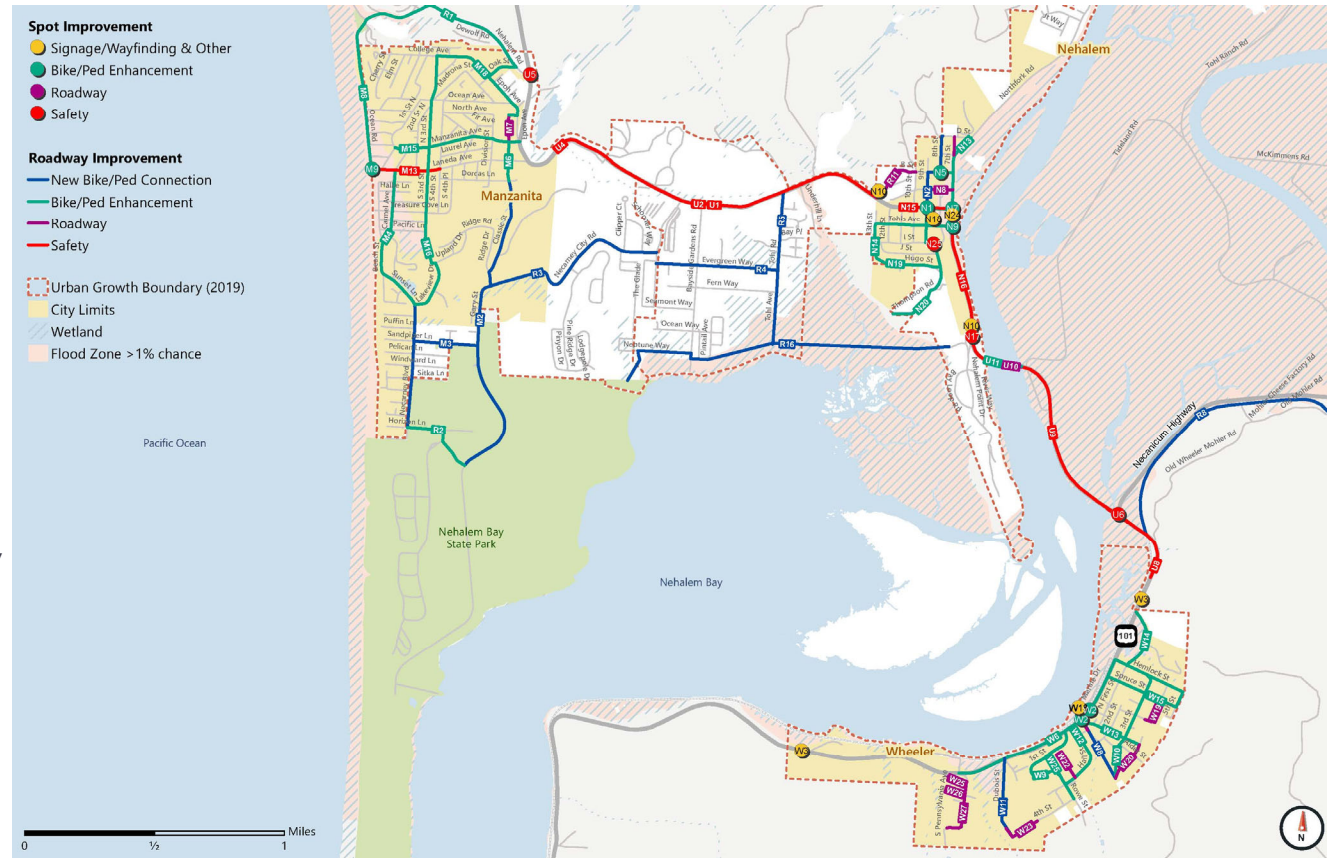
Urban Growth Boundary (2019)

- City Limits
- Wetland
- Flood Zone > 1% chance



Regional Projects

- ✓ Enhance Quality of Life
- ✓ Create Safe Connections
- ✓ Plan for the Future
- ✓ Support Fiscal Responsibility



Quality of Life

Project ID	Project Name & Description	Extents	Category
R3	Necarney City Road Trail Connection: Construct a separated multiuse trail to provide a connection for people walking and biking parallel to US 101.	Ridge Drive to Necarney City Drive	New Bike/Ped Connection
R4	Evergreen Way Trail Connection: Construct a multiuse trail to provide a connection for people walking and biking parallel to US 101.	The Promenade to Tohl Avenue	New Bike/Ped Connection
R5	Tohl Avenue Trail Connection: Construct a multiuse trail to provide a connection for people walking and biking to connect to planned facilities and Manzanita.	US 101 to Terminus	New Bike/Ped Connection
R8	Mohler Trail Connection: Provide a multiuse connection from US 101 to Mohler Trail Road along the identified Salmonberry Trail alignment parallel to the railroad tracks.	US 101 to Mohler Cheese Factory Road	New Bike/Ped Connection
R13	Oregon Coast Trail Realignment: Realign the Oregon Coast Trail through Manzanita with more direct access to Nehalem Bay State Park. This project should include wayfinding signage and be coordinated with other enhancements for people walking and biking in the region.	Nehalem Road to Nehalem Bay State Mark	New Bike/Ped Connection
U3	Speed Feedback Signs: Identify locations on US 101 where speed feedback signs may be placed to alert drivers of their speeds.	Regional	Safety
R16	Nehalem Point to Nehalem State Park Bicycle & Pedestrian Connection: Construct a paved trail connecting people walking and biking from Nehalem to Nehalem State Park off US 101.	Nehalem Point to Nehalem State Park	New Bike/Ped Connection

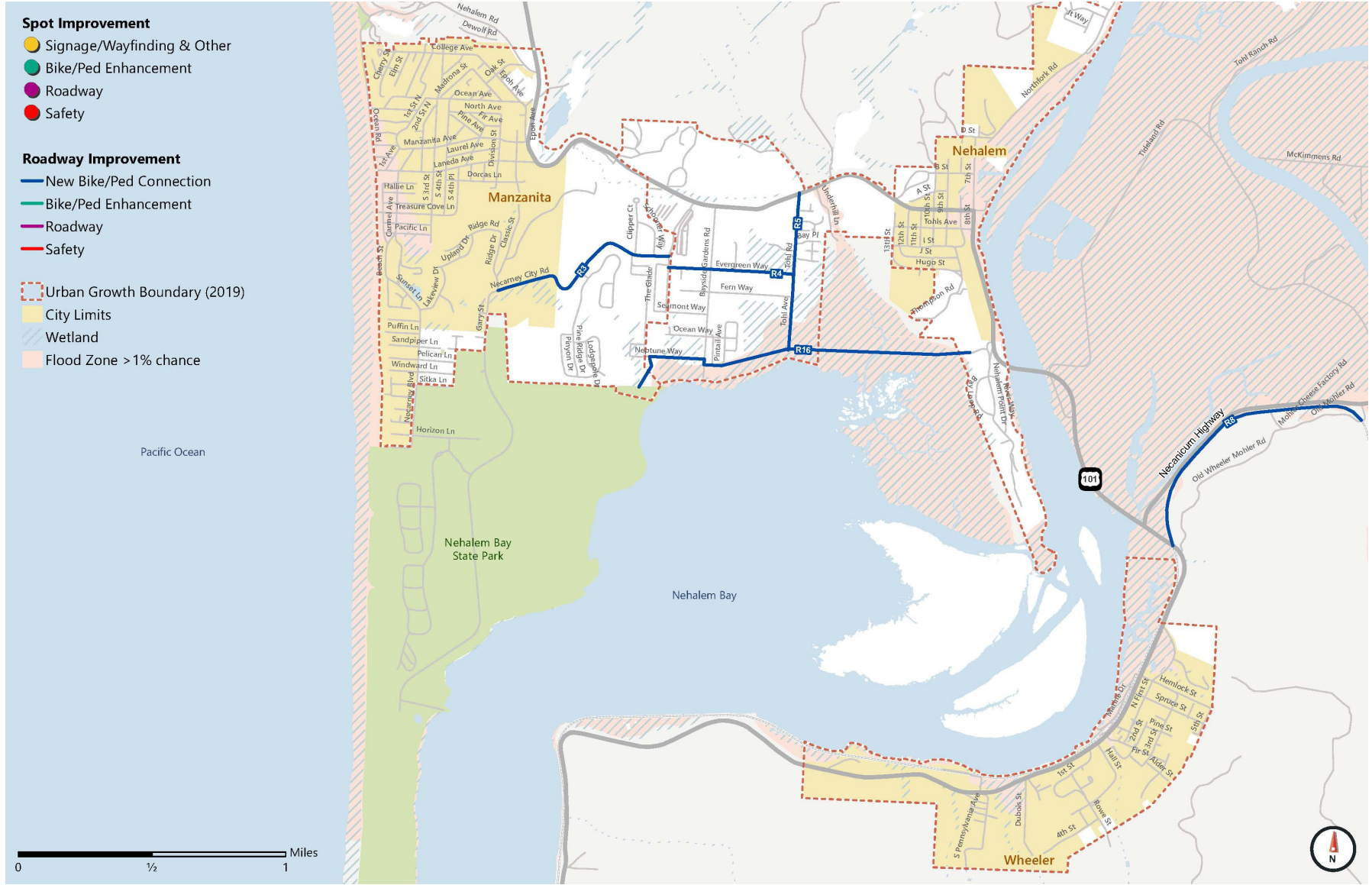
Spot Improvement

- Signage/Wayfinding & Other
- Bike/Ped Enhancement
- Roadway
- Safety

Roadway Improvement

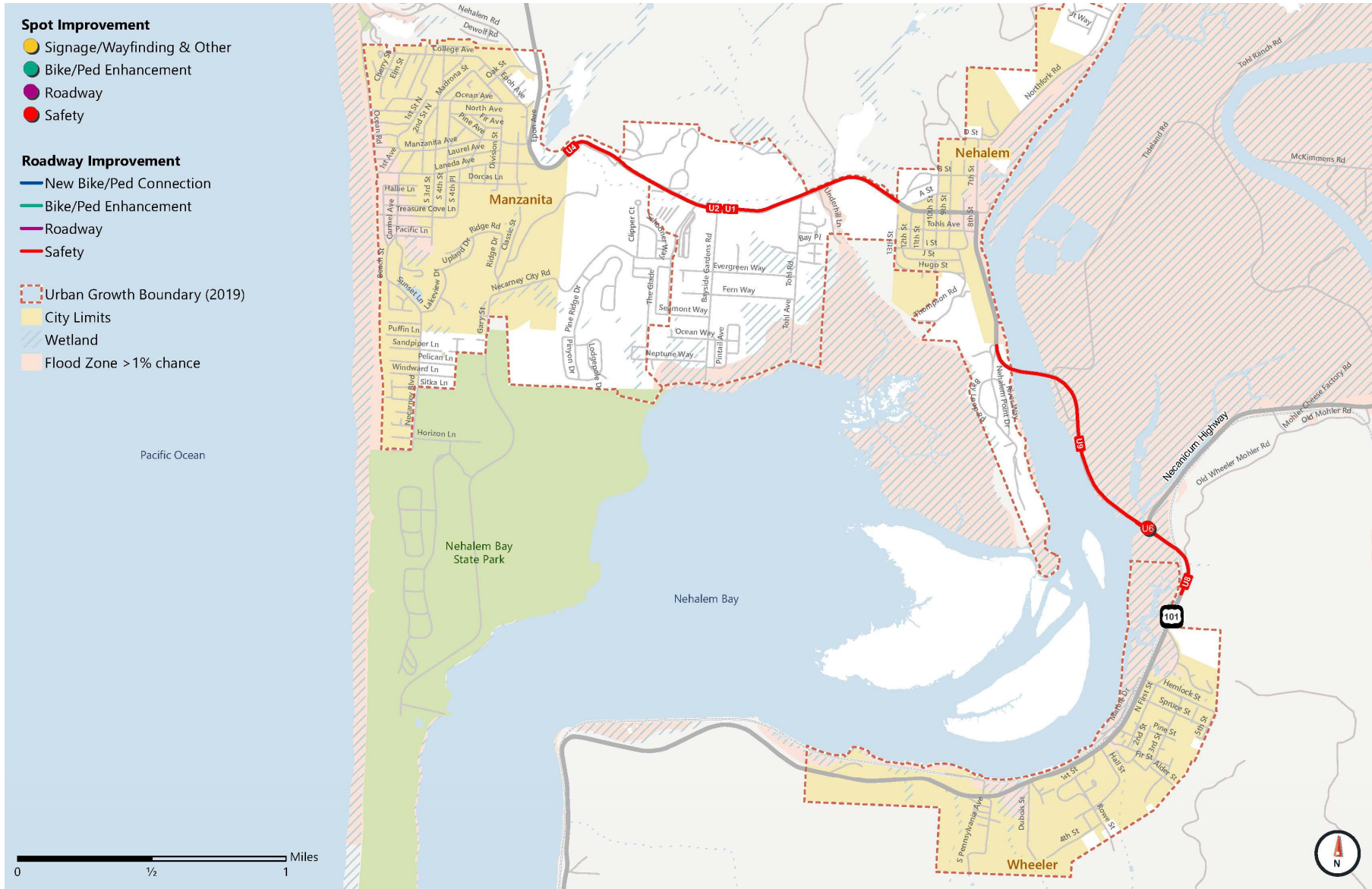
- New Bike/Ped Connection
- Bike/Ped Enhancement
- Roadway
- Safety

- ▭ Urban Growth Boundary (2019)
- ▭ City Limits
- ▭ Wetland
- ▭ Flood Zone >1% chance



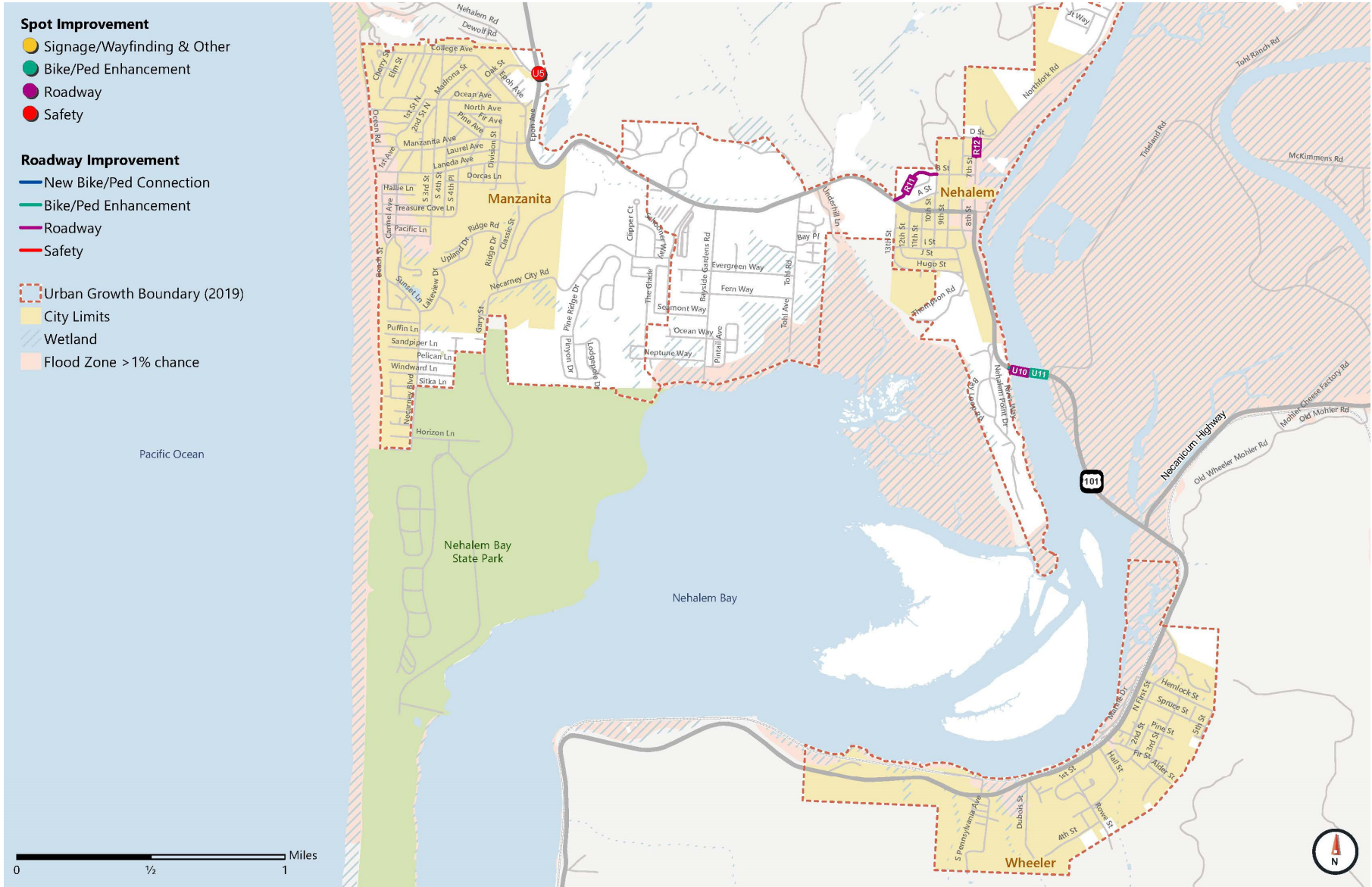
Create Safer Connections

Project ID	Project Name & Description	Extents	Category
U1	Widen US 101 Shoulders: Widen shoulders on US 101 to ODOT standard to support bicycle travel.	Manzanita City Limits to Nehalem City Limits	Safety
U2	US 101 Rumble Strips: Add rumble strips and install a safety edge to alert drivers and enhance safety for people biking on US 101.	Manzanita City Limits to Nehalem City Limits	Safety
U4	Enhanced Curve Delineation: Provide enhanced delineation treatments such as chevron signs or delineators to the horizontal curve located between milepost 43.3 and 43.5.	East of Manzanita city limits, approximately mp 43.3 to 43.5	Safety
U6	SR 53 Intersection Advanced Signage: Improve safety at the intersection by installing advanced signage to alert drivers of upcoming intersection.	US 101 near SR 53	Safety
U7	SR 53 Intersection Enhancements: Review turn pockets at SR 53/US 101 intersection to confirm turn pockets meet design standards; identify improvements if needed.	US 101 near SR 53	Safety
U8	Extend US 101 Guardrail and Rumble Strips: Extend the existing guardrail and add rumble strips to improve safety near the curve on US 101.	US 101 curve south of SR 53, approximately mp 46.6 to 46.8	Safety
U9	Widen US 101 Shoulders: Widen shoulders on US 101 to ODOT standard to support bicycle travel.	Nehalem Point Drive to future Salmonberry Trail Crossing location east of SR 53	Safety



Plan for the Future

Project ID	Project Name & Description	Extents	Category
R7	Regional Water Taxi: Explore options to operate a regional water taxi with stops in Nehalem, Wheeler and Nehalem Bay State Park to connect local destinations and enhance tourism.	-	Other
R11	B Street Improvements: Improve the quality of B Street to create a more reliable connection to US 101 during seasonal flooding.	10th Street to US 101	Roadway
R12	Northfork Road Improvements: Improve the pavement quality of Northfork Road between C Street and D Street.	C Street to D Street	Roadway
U5	US 101 & Nehalem Road Intersection Improvements: Provide a dedicated buffered turn lane for southbound drivers turning right to address turning movement crashes.	US 101 & Nehalem Road	Safety
U10	US 101 Bridge Seismic Upgrades: Retrofit the US 101 bridge between Nehalem and Wheeler to the most recent seismic standards.	US 101 Bridge	Roadway
U11	US 101 Bridge Bicycle & Pedestrian Enhancements: Retrofit the US 101 bridge between Nehalem and Wheeler with separated space for bicycles and pedestrians to travel.	US 101 Bridge	Bike/Ped Enhancement
R15	Emergency Planning Coordination: Create a coordinated emergency planning group with representatives from state, county, and local agencies and emergency services.	-	Programmatic



Support Fiscal Responsibility

Project ID	Project Name & Description	Extents	Category
R1	Nehalem Road Bicycle & Pedestrian Enhancements: Enhance Nehalem Road with signing and striping to identify space for people walking and biking and create an east/west connection for these users north of the City.	Oak Street to Pacific Boulevard	Bike/Ped Enhancement
R2	Horizon Lane Bicycle & Pedestrian Enhancements: Enhance Horizon Lane with signing and striping to identify space for people walking and biking.	Nearney Blvd to Gary Street	Bike/Ped Enhancement
R6	Regional Circulator/Shuttle: Explore options to create a regional circulator or shuttle to connect visitors and residents traveling between the three communities and creating the ability to park once and visit all local destinations.	-	Transit
R9	US 101 Speed Study: Complete a speed study on US 101 to identify opportunities to lower speeds, particularly near city limits.	-	Programmatic
R10	Enhanced Transit Service: Provide more frequent transit service and consider new stops within each of the Nehalem Bay communities.	-	Transit
R14	Transit Stop Enhancements: Upgrade existing transit stops in the region with shelters, benches, signage, and ADA upgrades.	-	Transit

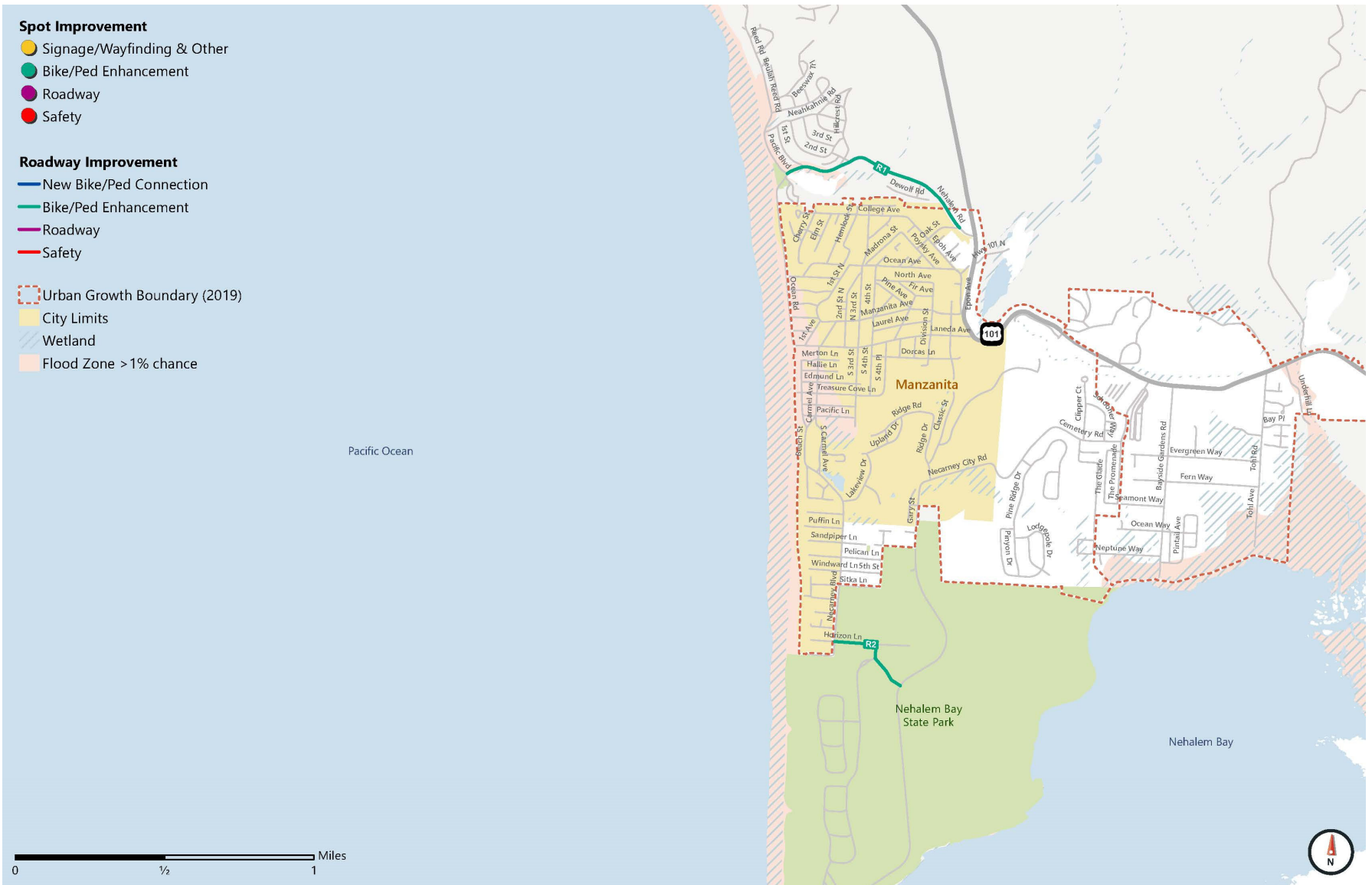
Spot Improvement

- Signage/Wayfinding & Other
- Bike/Ped Enhancement
- Roadway
- Safety

Roadway Improvement

- New Bike/Ped Connection
- Bike/Ped Enhancement
- Roadway
- Safety

- ▭ Urban Growth Boundary (2019)
- ▭ City Limits
- ▭ Wetland
- ▭ Flood Zone > 1% chance



Tell Us What You Think!

These are the solutions we're considering including in the TSP.

What are your top 3 priorities?

What is your lowest priority?



Next Steps

Tell us what you think
through February 24th!

Nehalembaytsp.org

- Use Input Gathered from Community Conversations to Inform Prioritized List of Projects
- Develop a Draft TSP
- Community Event in Late Spring
- Council Adoption in Summer

Thank You!

Kara Hall

Nehalem Community Lead

Fehr & Peers Portland

k.hall@fehrandpeers.com

503-416-7287

Ken Shonkwiler

Senior Region Planner

ODOT Region 2

Kenneth.d.Shonkwiler@odot.state.or.us

503-325-5281