

Nehalem Bay TSP Community Conversations

City of Wheeler
January 25, 2022



Meeting Overview

- Provide an overview of the TSP process.
- Share what we've heard so far and confirm priorities.
- Discuss proposed projects and gather feedback to inform the project lists.
- Overview of next steps and opportunities for input.

What We Want to Hear from You...

- What is your top concern related to the transportation system?
- Are we missing any priorities?
- Which three projects are your top priorities? Why?
- What is missing?
- What outcomes do you want to see?

TSP Overview

- **TSP 101**
- **TSP Milestones & Where We Are**
- **What We've Heard**
- **Community Goals & Priorities**

TSP 101

A realistic plan that results in action

A TSP provides a comprehensive, multimodal picture of how the existing and future transportation system meets the needs of its users.

- ODOT TSP Guidelines



TSP 101

The TSP will:

- Develop transportation networks for all users – drivers, transit riders, walkers and bicyclists.
- Predict how well the system will work in the future and suggest improvements.
- Establish new goals and policies to guide City decision-making.
- Develop a prioritized list of transportation projects to support bicyclists, pedestrians, transit riders, cars, and safety.
- Make recommendations about how to pay for improvements.

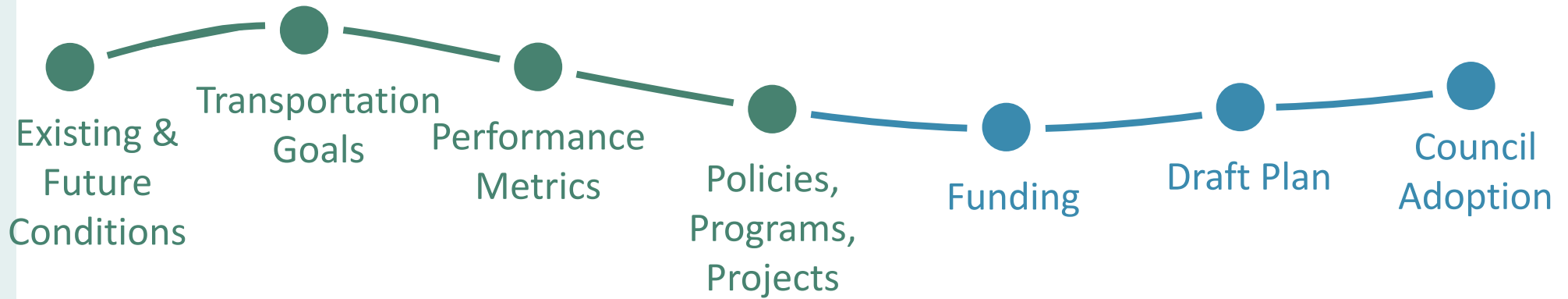


TSP 101

What will make the TSP Successful?

- A clear, consistent vision
- Goals & performance measures that reflect community goals
- Policies, programs, and projects that reflect existing work and future needs
- Clear direction for staff and Council

The TSP Process



Community Engagement



How do we make transportation better in Nehalem Bay?

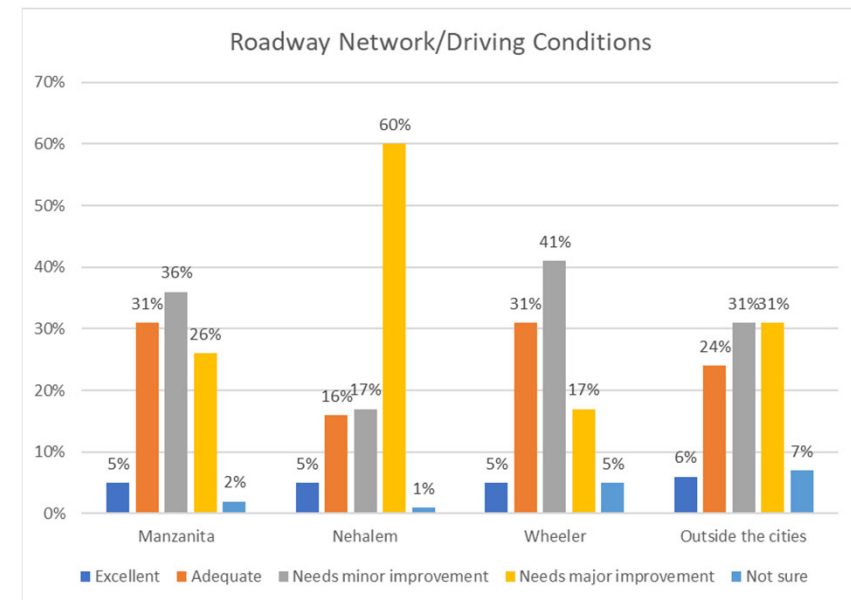
The Cities of Manzanita, Nehalem, Wheeler, and the Oregon Department of Transportation are developing a joint Transportation System Plan (TSP) for Nehalem Bay.

Now through August 15th, you can participate in our online open house to give us your ideas for improving transportation in our region.

Visit nehalembaytsp.org to take a survey and use an interactive map to tell us what you know.

What We Heard from Wheeler

- Speeding on Marine Drive
- Speed limits too high too close to city limits
- Lack of safe facilities for walking/biking
- Significance of intersection near the Mohler Co-op.



Why set TSP Goals?

What is the purpose of the TSP goals?

- Reflect each community's **values and vision** for the future
- Shape transportation **performance measures**
- Shape how **projects** are developed and prioritized



Quality of Life

Create a transportation system that provides equitable multimodal access for underserved and vulnerable populations and balances the needs of local travelers and regional through-traffic.

- Projects that advance this goal:
 - Improve access for **underserved or vulnerable populations**.
 - Improve a route predominately used by **local travelers** off US 101.
 - Improve the experience of people **traveling through** Nehalem Bay.

Create Safe Connections

Create safer connections between the Nehalem Bay communities for people walking, biking, or using other non-auto modes and identify strategies to reduce crashes for all users when traveling on US 101.

- Projects that advance this goal:
 - Address a location with a history of fatal/severe **injury crashes** and/or **bike/ped crashes**.
 - Create **new connections** off US 101 between Nehalem Bay communities.
 - Include a traffic calming element aimed at **slowing vehicle traffic** to improve safety and comfort for active transportation users.

Plan for the Future

Collaborate with ODOT and Tillamook County to create a transportation system that is resilient to extreme weather events, able to safely accommodate evacuation and recovery efforts, and consistent with the goals and objectives of each City, Tillamook County, and the state.

- Projects that advance this goal:
 - Maintain or rebuild **critical infrastructure**; or improve access for emergency vehicles.
 - Include a **maintenance** component on local roads.
 - Improve US 101 **consistent with ODOT** design guidance or other regional planning efforts.

Support Fiscal Responsibility

Plan for a transportation system that is financially viable with consideration for life cycle costs by identifying new funding sources to make local dollars go farther.

- Projects that advance this goal:
 - Build on investments in transportation funded primarily by entities other than the city (state, regional, county).
 - Leverage grant funding opportunities.

Create More Travel Options

Improve walking and biking safety, connections, and wayfinding within Wheeler.

- Projects that advance this goal:
 - Build or enhance sidewalks or crossings in the commercial core or as a connection to key local destinations.
 - Include streetscape improvements or wayfinding improvements.

Enhance Economic Vibrancy

Support economic vibrancy by creating connections to recreational opportunities and new forms of local tourism while protecting the natural beauty that draws visitors to Wheeler.

- Projects that advance this goal:
 - Improve walking, biking, or watercraft access to natural areas and/or parks.
 - Minimize runoff by not increasing the amount of impervious surface within Wheeler.

Tell Us What You Think!

These are the concerns and priorities that we heard from folks in your community.

What is your top concern?

What is your top priority?

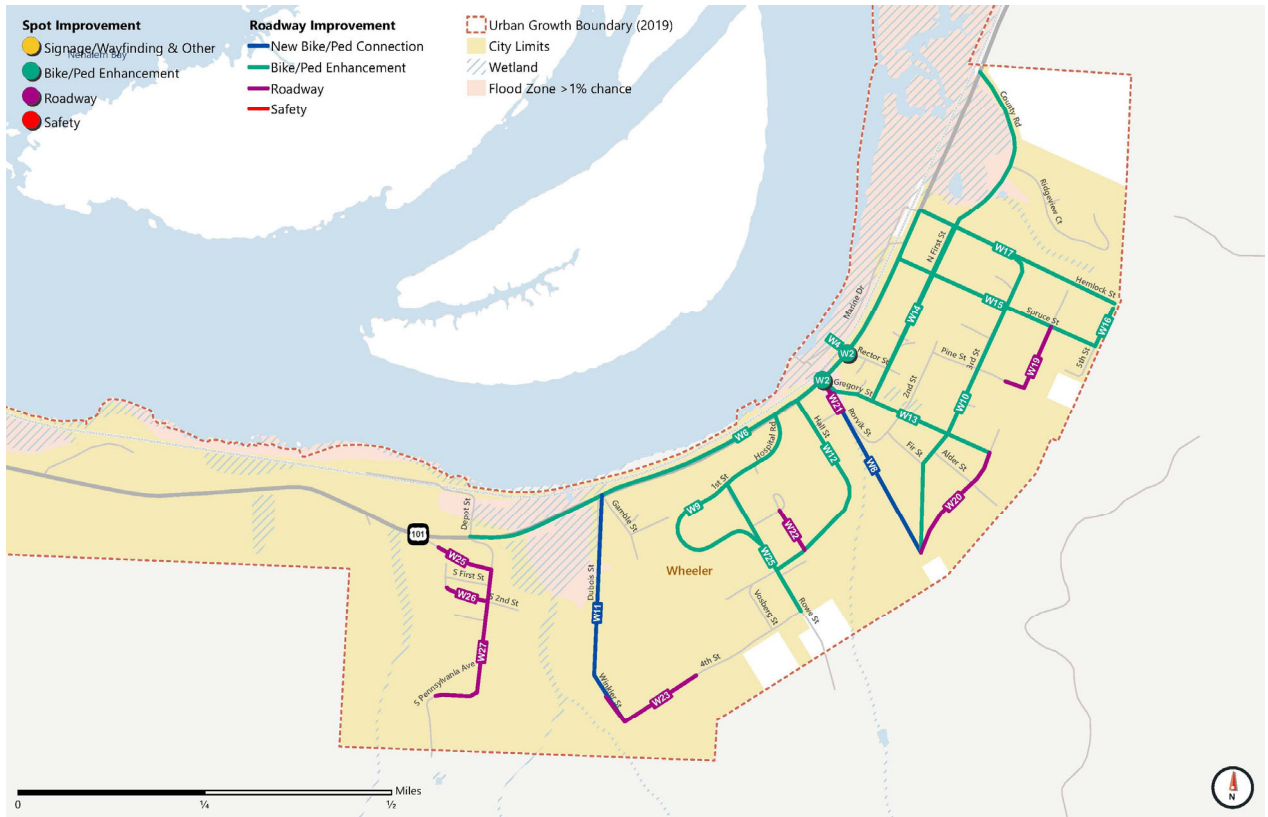


Project Overview

- **97 Total Projects**
- **27 Regional Projects**
 - Projects located on US 101 (ODOT)
 - Projects outside City limits (Tillamook County)
- **27 Projects in Wheeler**
- **43 Projects in Manzanita & Nehalem**
- **All Projects Advance Multiple Goals**
- **This List Does Not Guarantee Funding**

City of Wheeler Projects

- ✓ Enhance Quality of Life
- ✓ Create Safe Connections
- ✓ Plan for the Future
- ✓ Support Fiscal Responsibility
- ✓ Create More Travel Options
- ✓ Enhance Economic Vibrancy



Quality of Life

Project ID	Project Name & Description	Extents	Category
W20	4th Street Paving: Pave 4th Street from Gregory Street to Rorvik Street and from Davis Street to Rowe Street.	Gregory Street to Rorvik Street & Davis Street to Rowe Street	Roadway
W21	Rorvik Street Paving: Pave Rorvik Street from 1st Street to 2nd Street.	1st Street to 2nd Street	Roadway
W23	Winkler Street Improvements: Improve the condition of Winkler Street from 4th Street to Dubois Street.	4th Street to Dubois Street	Roadway
W24	Rowe Street Improvements: Improve pavement condition and enhance Rowe Street with signing and striping to identify space for people walking and biking.	1st Street to 4th Street	Roadway
W25	Bayview Paving: Pave Bayview between Oregon Avenue and Pennsylvania Avenue.	Oregon Avenue to Pennsylvania Avenue	Roadway
W26	River View Paving: Pave River View from Pennsylvania Avenue to its terminus.	Pennsylvania Avenue to Terminus	Roadway
W27	Pennsylvania Avenue Paving: Pave Pennsylvania Avenue from 1st Street to Dichter Drive	1st Street to Dichter Drive	Roadway

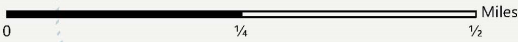
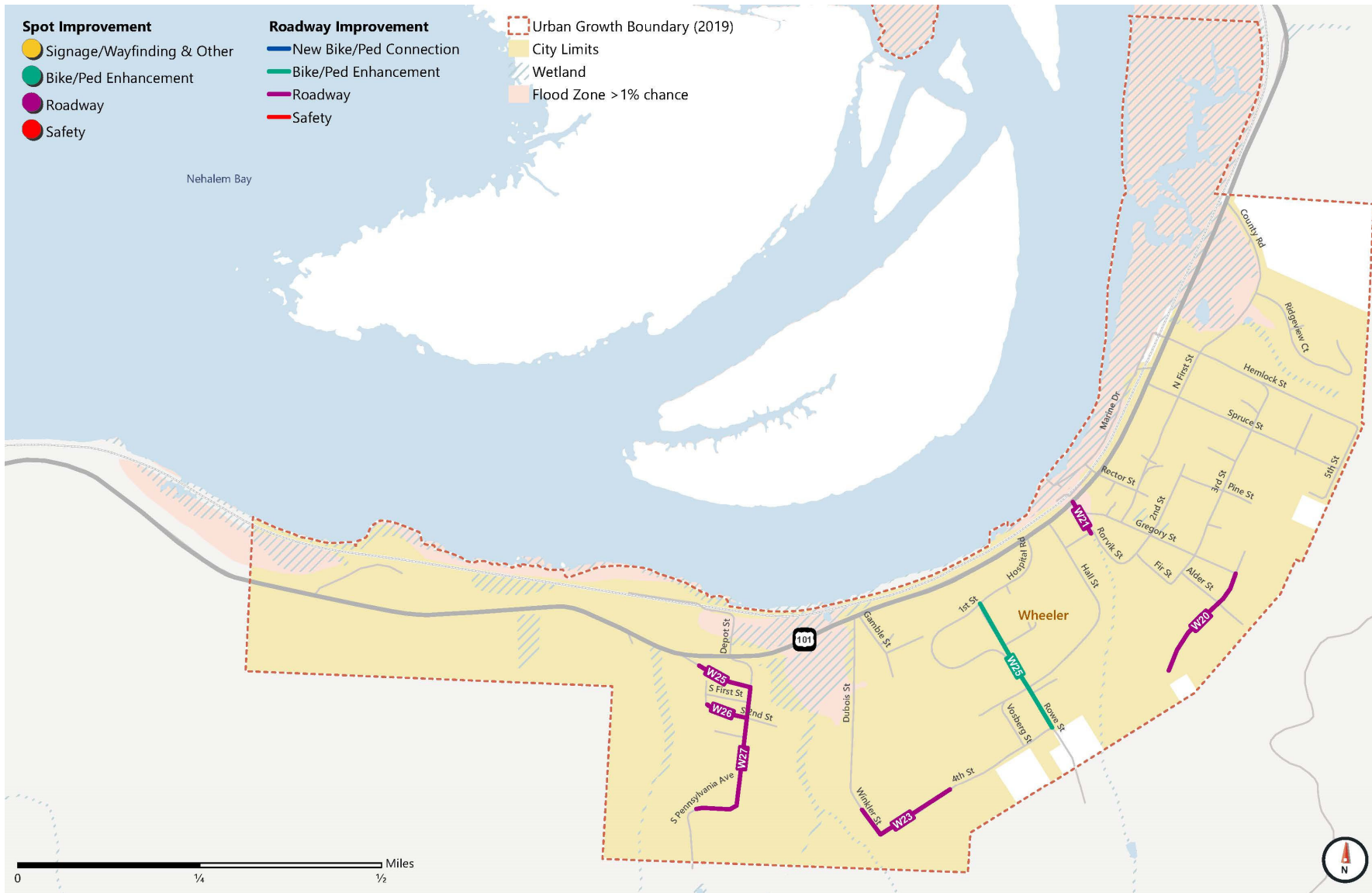
Spot Improvement

- Signage/Wayfinding & Other
- Bike/Ped Enhancement
- Roadway
- Safety

Roadway Improvement

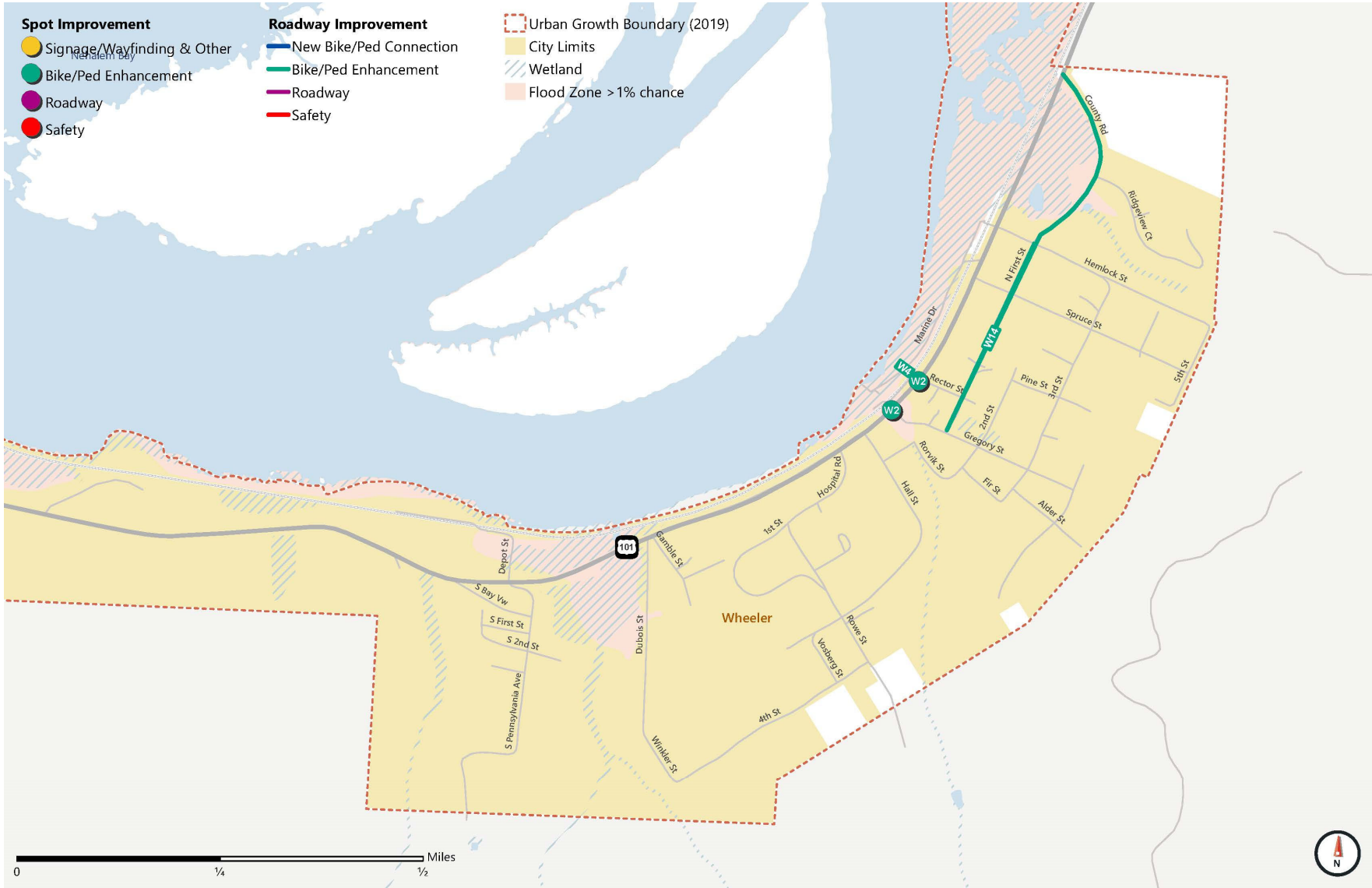
- New Bike/Ped Connection
- Bike/Ped Enhancement
- Roadway
- Safety

- Urban Growth Boundary (2019)
- City Limits
- Wetland
- Flood Zone >1% chance



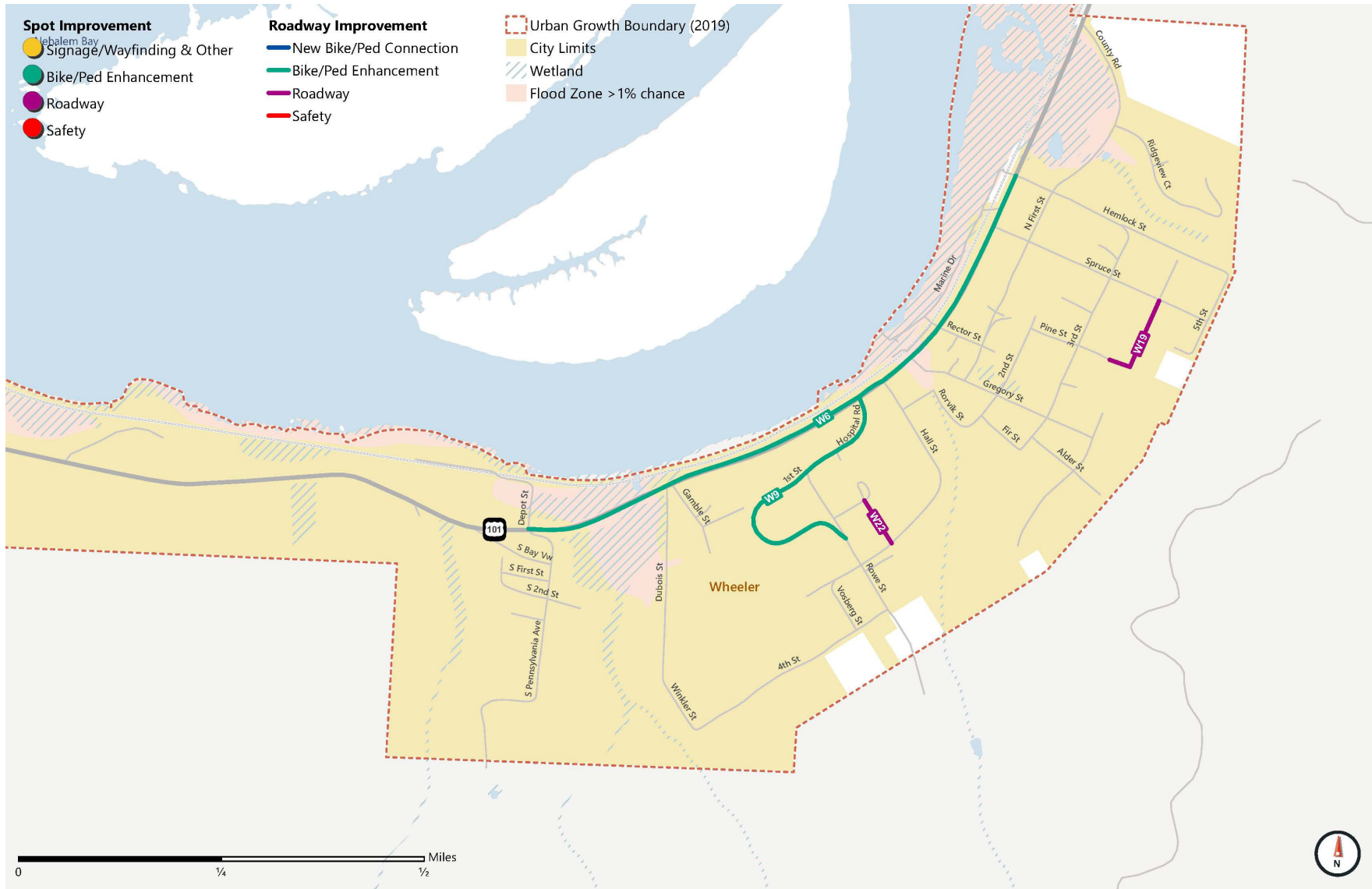
Create Safer Connections

Project ID	Project Name & Description	Extents	Category
W1	Citywide Sidewalk Improvements: Improve access to local destinations and ADA access by improving existing sidewalks on US 101, Gregory Street, and Rorvik Street.	Citywide	Bike/Ped Enhancement
W2	Enhance US 101 Crossings: Enhance US 101 crossings by providing high-visibility crosswalks and improving illumination.	Gregory Street/Rorvik Street & Rector Street	Bike/Ped Enhancement
W4	Railroad Crossing: Connect people walking, biking, and using transit across the railroad tracks by extending the sidewalk on the north side of Rector Street to connect to the existing transit stop.	-	Bike/Ped Enhancement
W14	1st Street Bicycle & Pedestrian Enhancements: Enhance 1st Street with signing and striping to identify space for people walking and biking.	Gregory Street to US 101	Bike/Ped Enhancement



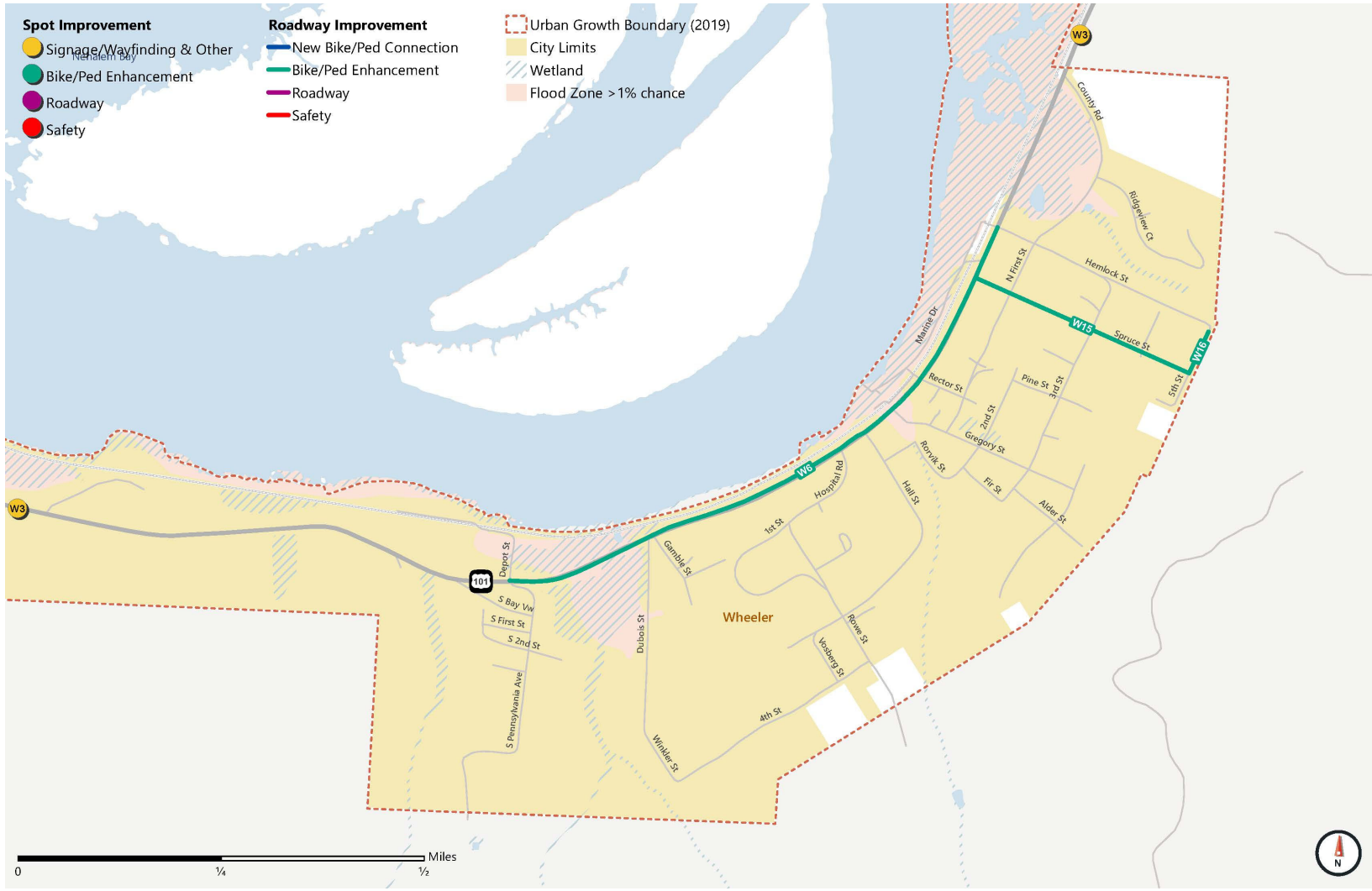
Plan for the Future

Project ID	Project Name & Description	Extents	Category
W6b	US 101 Bicycle Lanes: Widen US 101 through Wheeler to accommodate separated bicycle lanes.	Rorvik Street to Hemlock Street	Bike/Ped Enhancement
W9	Hospital Road Enhancements: Enhance Hospital Road and surrounding the City-owned land (future park) with signing and striping to identify space for people walking and biking.	Fourth Street to Hospital Street	Bike/Ped Enhancement
W19	4th Street Connection: Connect 4th Street from Spruce Street to Pine Street.	Spruce Street to Pine Street	Roadway
W22	Akin Street Paving: Connect and Pave Akin Street from 2nd Street to 3rd Street.	2nd Street to 3rd Street	Roadway



Support Fiscal Responsibility

Project ID	Project Name & Description	Extents	Category
W3	Gateway to Wheeler: Create a gateway to Wheeler by enhancing signage and adding landscaping and/or local artwork to alert people that they have entered city limits.	Wheeler City Limits	Signage/Wayfinding
W6a	US 101 Sharrows: Provide sharrows on US 101 to direct people biking on how to travel through downtown Wheeler.	Rorvik Street to Hemlock Street	Bike/Ped Enhancement
W15	Spruce Street Bicycle & Pedestrian Enhancements: Enhance Spruce Street with signing and striping to identify space for people walking and biking.	US 101 to 5th Street	Bike/Ped Enhancement
W16	5th Street Bicycle & Pedestrian Enhancements: Enhance 5th Street with signing and striping to create space for people walking and biking.	Spruce Street to Hemlock Street	Bike/Ped Enhancement



Create More Travel Options

Project ID	Project Name & Description	Extents	Category
W8	Gervais Creek Pathway: Construct a pathway parallel to Gervais Creek from Fourth Street to US 101, across the highway to the bay.	Fourth Street to Nehalem Bay	New Bike/Ped Connection
W10	3rd Street Bicycle & Pedestrian Enhancements: Enhance 3rd Street from Gervais Creek and the City-owned land (future park) to Hemlock Street with signing and striping to identify space for people walking and biking.	Gervais Creek to Hemlock Street	Bike/Ped Enhancement
W11	Vosburg Creek Pathway: Construct a pathway parallel to Vosburg Creek from Fourth Street to Nehalem Bay.	Vosburg Creek to Nehalem Bay	New Bike/Ped Connection
W17	Hemlock Street Enhancements: Complete pavement repairs and enhance Hemlock Street with signing and striping to identify space for people walking and biking.	5th Street to Marine Drive	Bike/Ped Enhancement



Enhance Economic Vibrancy

Project ID	Project Name & Description	Extents	Category
W5	Enhanced Wayfinding Signage: Connect people to local destinations by providing enhanced wayfinding signs to downtown, the dock, and other key local destinations.	Citywide	Signage/Wayfinding
W12	Hall Street Bicycle & Pedestrian Enhancements: Enhance Hall Street from US 101 to Rowe Street with signing and striping to identify space for people walking and biking.	US 101 to Rowe Street	Bike/Ped Enhancement
W13	Gregory Street Bicycle & Pedestrian Enhancements: Enhance Gregory Street with signing and striping to identify space for people walking and biking.	US 101 to 4th Street	Bike/Ped Enhancement
W18	Marine Drive Parking Lot Enhancements: Pave the parking lot located off Marine Drive.	-	Other



Tell Us What You Think!

These are the solutions we're considering including in the TSP.

What are your top 3 priorities?

What is your lowest priority?



Next Steps

Tell us what you think
through February 10th!

Nehalembaytsp.org

- Use Input Gathered from Community Conversations to Inform Prioritized List of Projects
- Develop a Draft TSP
- Community Event in Late Spring
- Council Adoption in Summer

Thank You!

Sarah Peters

Wheeler Community Lead

Fehr & Peers Portland

s.peters@fehrandpeers.com

503-416-7282

Ken Shonkwiler

Senior Region Planner

ODOT Region 2

Kenneth.d.Shonkwiler@odot.state.or.us

503-325-5281