

# Nehalem Bay TSP Planning Commission Workshop

City of Nehalem

May 5<sup>th</sup>, 2022



# Agenda

**15 minutes**

**Introductions, Agenda Review, and Meeting Purpose**

**10 minutes**

**Nehalem Bay TSP: Project Update**

**50 minutes**

**Presentation & Discussion: Projects & Priorities**

**5 minutes**

**Public Comment**

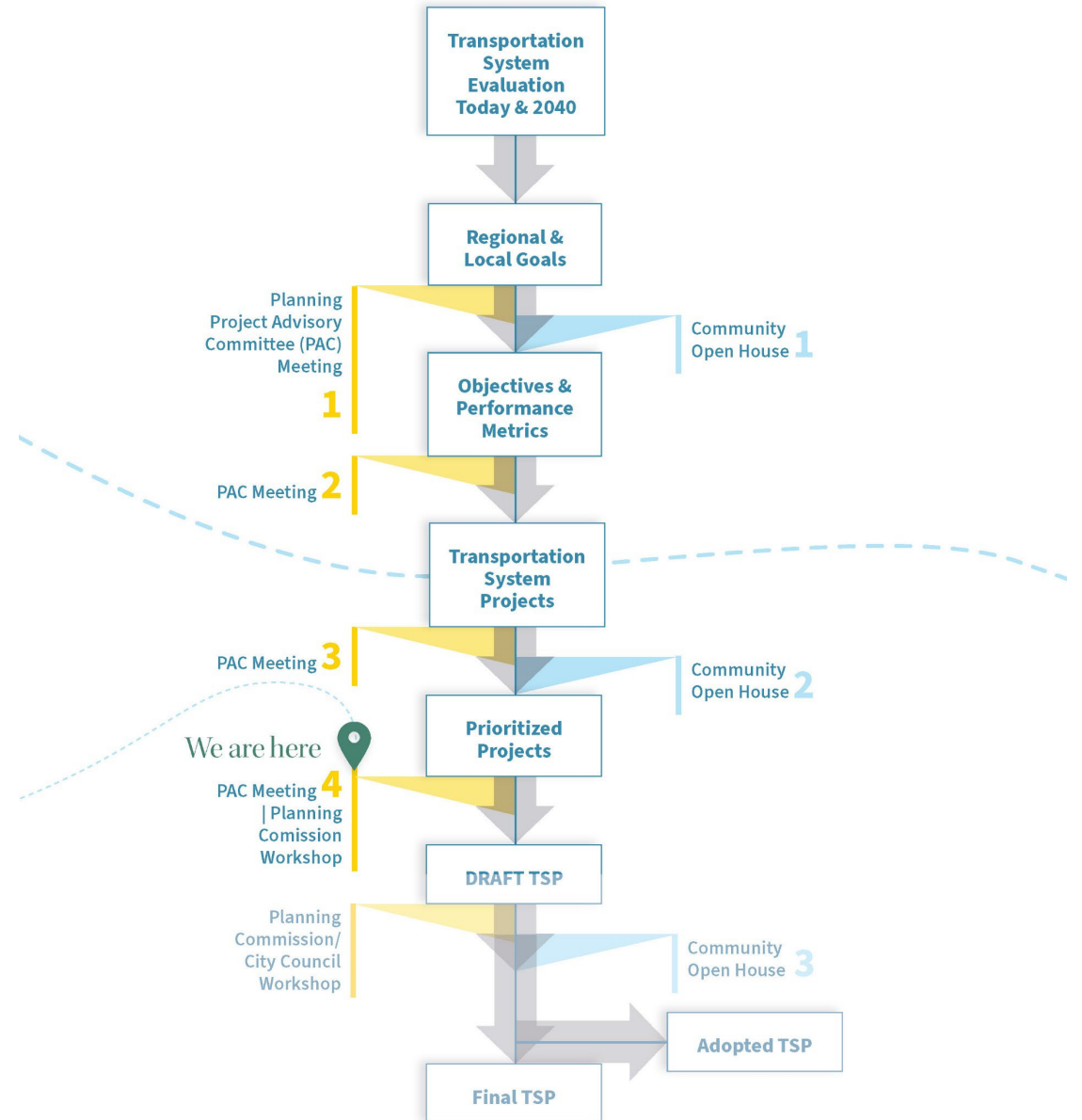
**10 minutes**

**Next Steps**

# Meeting Purpose

- Provide an update on the Nehalem Bay TSP to Planning Commission.
- Share what we have heard from community members.
- Gather Planning Commission input on project list and priorities.

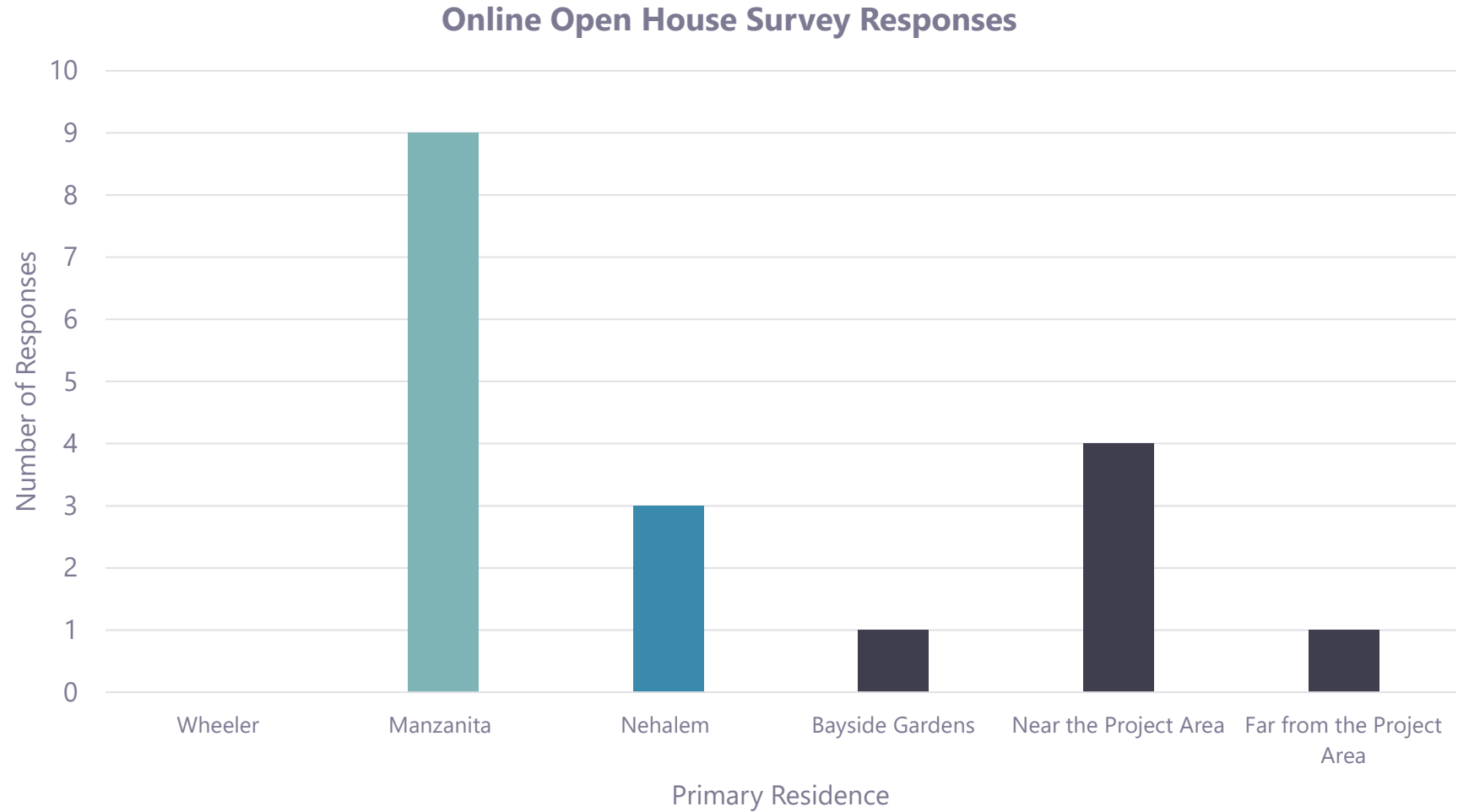
# TSP Project Milestones



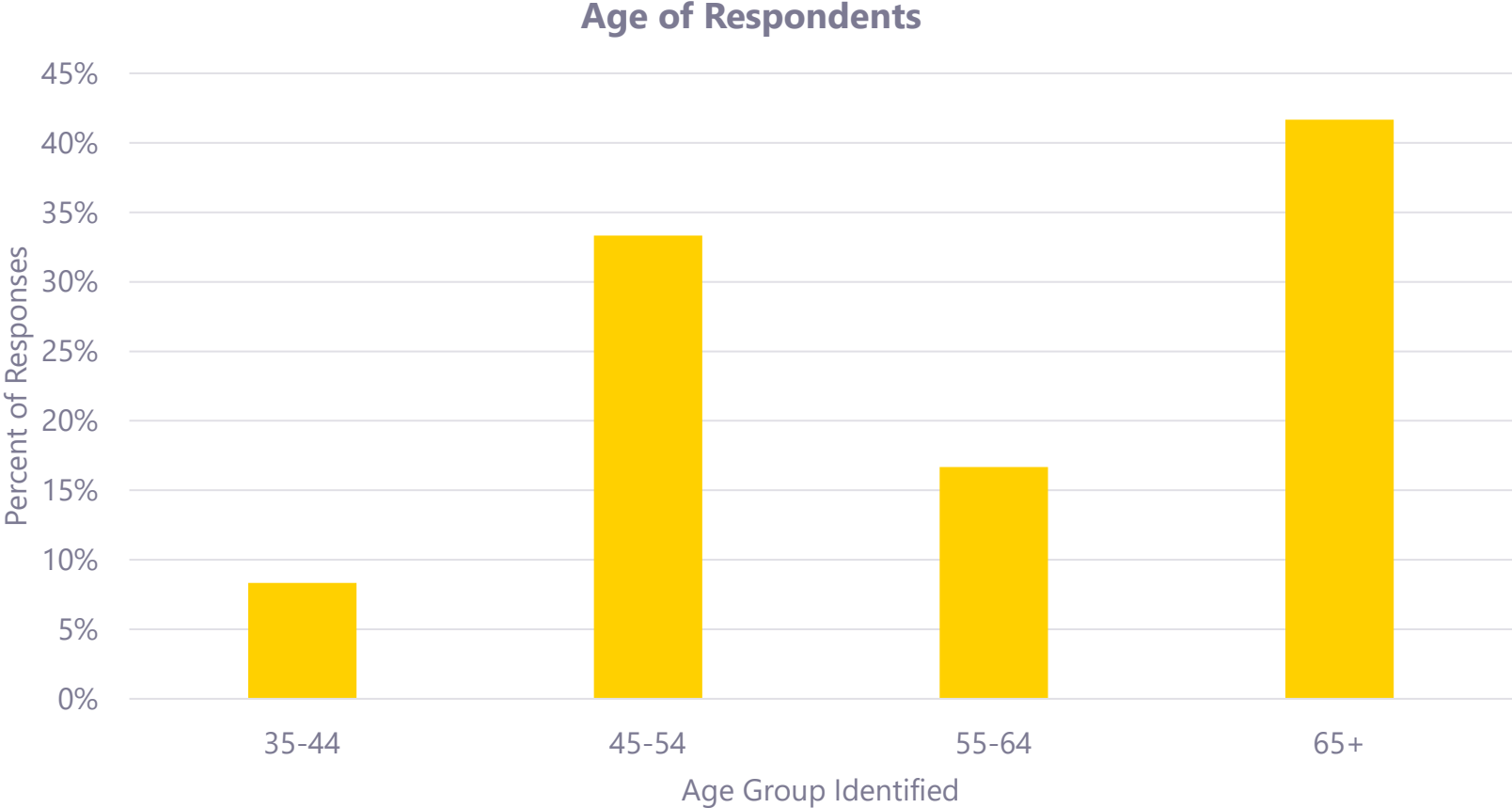
# Community Conversations & Online Open House

- Online Open House January 25<sup>th</sup> through February 28<sup>th</sup>
- Paired with Community Conversation on February 3<sup>rd</sup>
- Opportunity to provide input on:
  - Goals & Objectives
  - Regional Projects
  - Local Projects

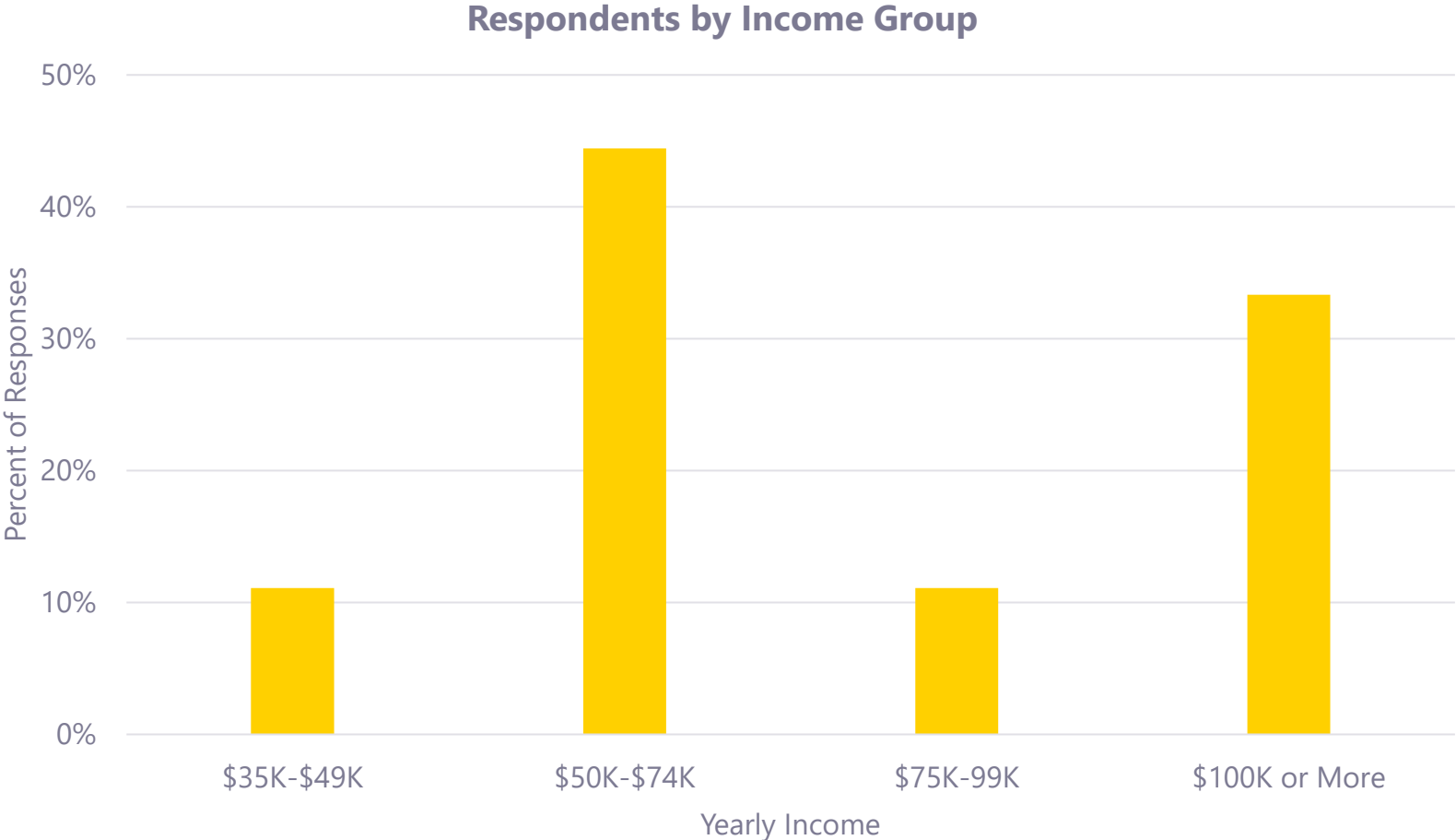
# Who We Reached



# Who We Reached



# Who We Reached



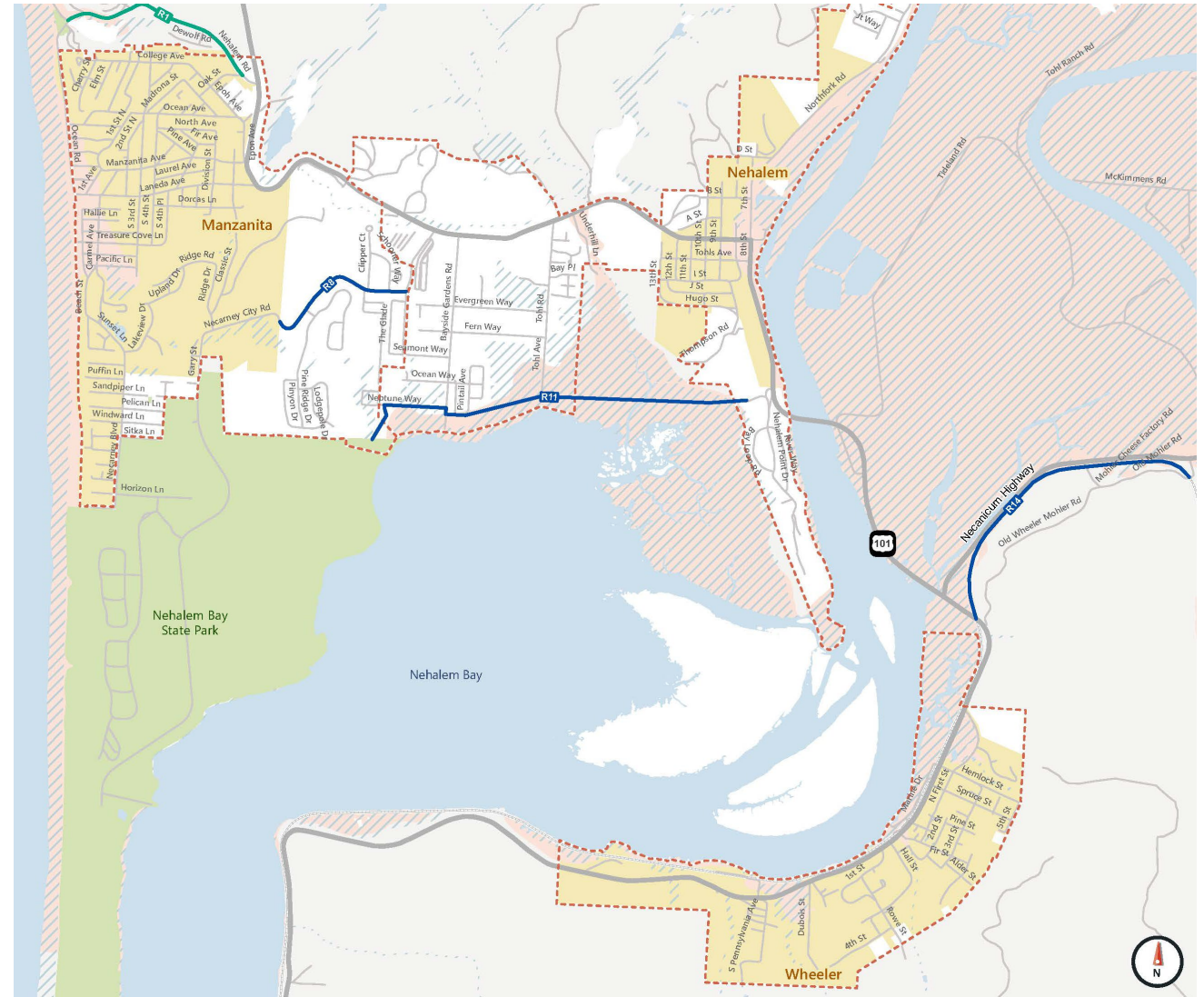


# Key Takeaways – Regional Projects

- Bicycle and pedestrian infrastructure is a high priority for community members
- Bicycle and pedestrian access to the state park will help move visitors without cars
- Several roadways in the County feel unsafe for bicycles and pedestrians (Necarney City Road, Nehalem Road)
- As growth continues and the number of visitors increase, more options for travel will be needed.

# High Priority Projects - Regional

- Nehalem Road Bicycle & Pedestrian Enhancements
- Necarney City Road Bicycle & Pedestrian Improvements
- Mohler Trail Connection
- Nehalem Point to Nehalem State Park Bicycle & Pedestrian Connection
- Oregon Coast Trail Realignment



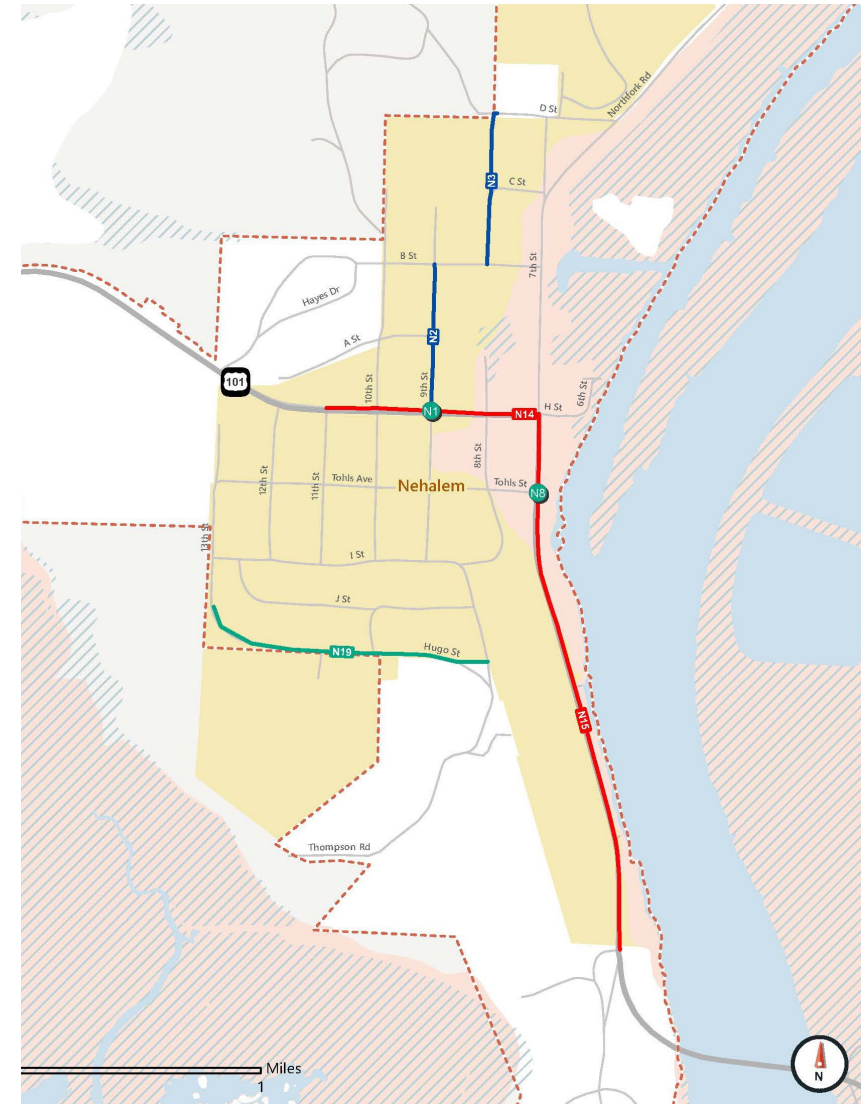
# Key Takeaways – Nehalem Projects

---

- Projects that increase safety for pedestrians should be a priority
- Downtown is becoming more appealing and should act more like a “main street”
- Maintenance concerns on shared City/County roadways
- Should prioritize projects to keep bicyclists and pedestrians off US 101

# Key Takeaways – Nehalem Projects

- Thompson Road Bicycle & Pedestrian Enhancements
- US 101 & 7<sup>th</sup> Roundabout
- 8<sup>th</sup> Street Pedestrian Facilities
- 9<sup>th</sup> Street Pedestrian Facilities
- US 101 Safety Improvements South of Tohls
- 9<sup>th</sup> Street Crossing Enhancement
- Hugo Street Bicycle & Pedestrian Enhancements
- US 101 Traffic Calming



# Projects & Priorities

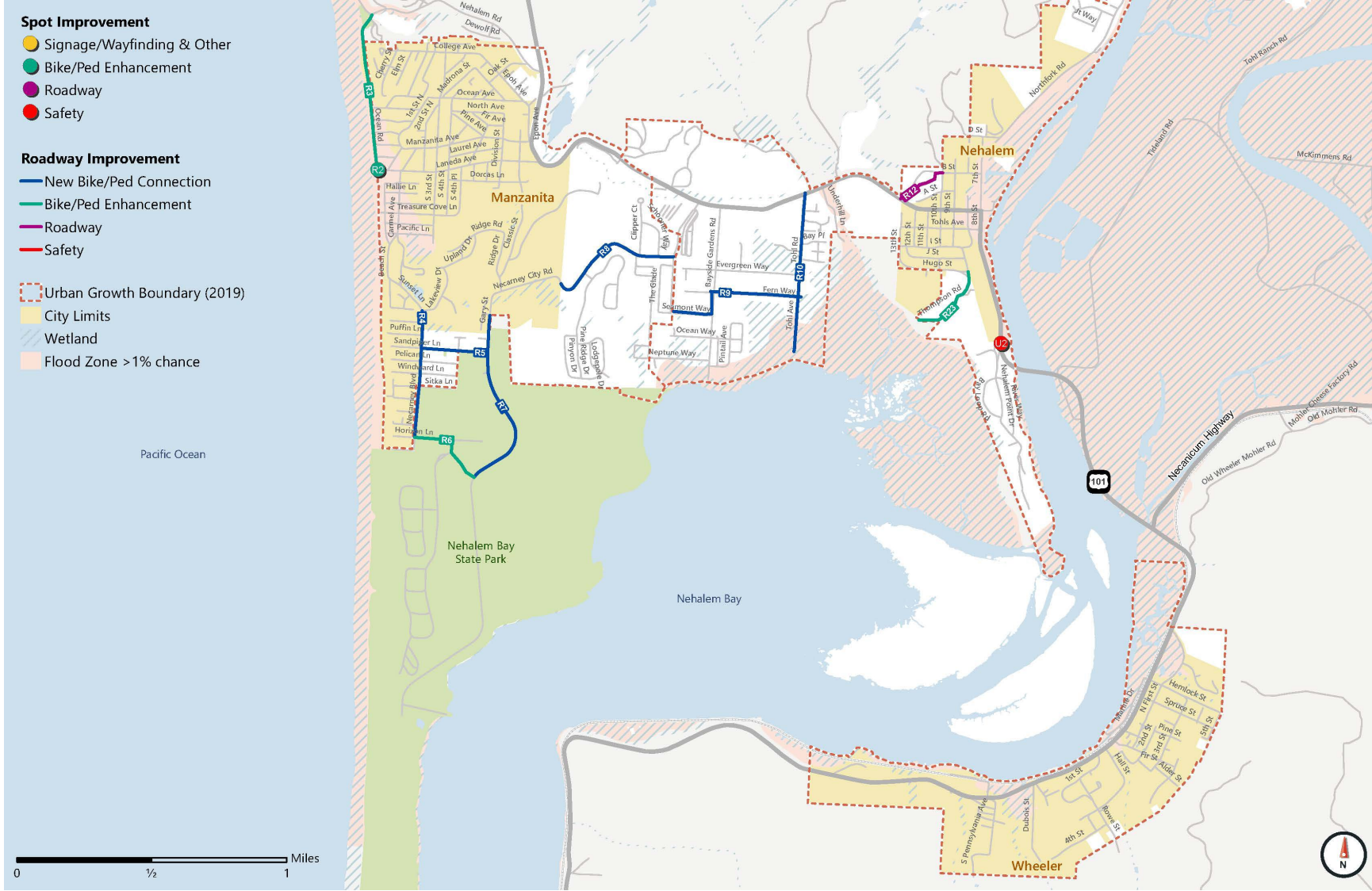
- Project updates based on community input.
- Why projects were prioritized.
- How projects were prioritized.
- Project discussion:
  - Do you have any concerns with the projects on this list?
  - Do the top performing projects align with what you see as priorities for the community?
  - Is there anything missing from the project list?

# Project Updates - Regional

Project ID	Project Name & Description
R7	<b>Gary Street Separated Facilities:</b> Construct paved shoulders for people biking and provide a separated path for people walking to connect people walking and biking between the Manzanita City Limits and Nehalem Bay State Park. Further analysis and coordination with Oregon State Parks would be required to identify final cross-section. This project should also include wayfinding to encourage visitors to walk and bike to the state park.
R8	<b>Necarney City Road Separated Facilities:</b> Construct paved shoulders with a striped buffer to provide space for people biking on the roadway and construct a separated path to separate people walking from cyclists and vehicles.
R15	<b>North County Flex Route:</b> Coordinate with Tillamook County Transportation District to operate flex-route service between Nehalem, Manzanita, Wheeler, Nehalem Bay State Park, and Oswald West State Park.
R9	<b>Fern Way/Seamont Way Bicycle &amp; Pedestrian Connection:</b> Enhance signing, striping, and wayfinding to create a connection from Tohl Avenue to The Promenade to create bicycle and pedestrian connections off of US 101.
R17	<b>Seasonal Circulator Shuttle:</b> Coordinate with the Tillamook County Transportation District to operate a seasonal circulator providing service between Manzanita, Nehalem, Wheeler, and Mohler with stops at Nehalem Bay State Park and Neahkahn Trailhead. This route could be operated with trolleys to enhance visitor experience.
R4	<b>Necarney Boulevard Bicycle Connection:</b> Provide bicycle sharrows along other elements aimed at speed management to connect people biking from the existing bicycle facility at Lakeview Drive to Nehalem Bay State Park.
R6	<b>Horizon Lane Bicycle &amp; Pedestrian Enhancements:</b> Enhance Horizon Lane with signing and striping to identify space for people walking and biking.
R10	<b>Tohl Avenue Bicycle &amp; Pedestrian Enhancements:</b> Enhance Tohl Avenue with signing, striping, and wayfinding to enhance connections from Nehalem to Manzanita off of US 101.
R5	<b>Gary Street to Necarney Boulevard Connection:</b> Construct a multiuse trail with wayfinding to connect people walking and biking between Necarney Boulevard and Gary Street north of Nehalem Bay State Park. The multiuse trail would serve as a connection for people walking and biking in the area until development occurs connecting either Puffin Lane or Sandpiper Lane.
R12	<b>Hayes Drive Improvements:</b> Improve the quality of B Street to create a more reliable connection to US 101 during seasonal flooding.
R3	<b>Ocean Road Bicycle &amp; Pedestrian Enhancements:</b> Enhance Ocean Avenue with signing and striping to identify space for people walking and biking.
R2	<b>Ocean Road Crossing Enhancements:</b> Enhance crossing Ocean Road crossing at Laneda Avenue with high-visibility markings and advance signage to alert drivers of crossing.
R21	<b>Regional Wayfinding:</b> Coordinate within the region to deploy wayfinding, maps, and signage that connects visitors to key destinations like Nehalem Bay State Park, local downtowns, and the Nehalem River.
R23	<b>Thompson Road Bicycle &amp; Pedestrian Enhancements:</b> Enhance Thompson Street with signing and striping to identify space for people walking and biking and to create a connection to planned trails.
U2	<b>US 101 &amp; Nehalem Point Drive Intersection Improvements:</b> Provide a two-way left-turn lane for drivers turning left onto Nehalem Point Drive and adjacent driveways to address crashes occurring at this intersection.

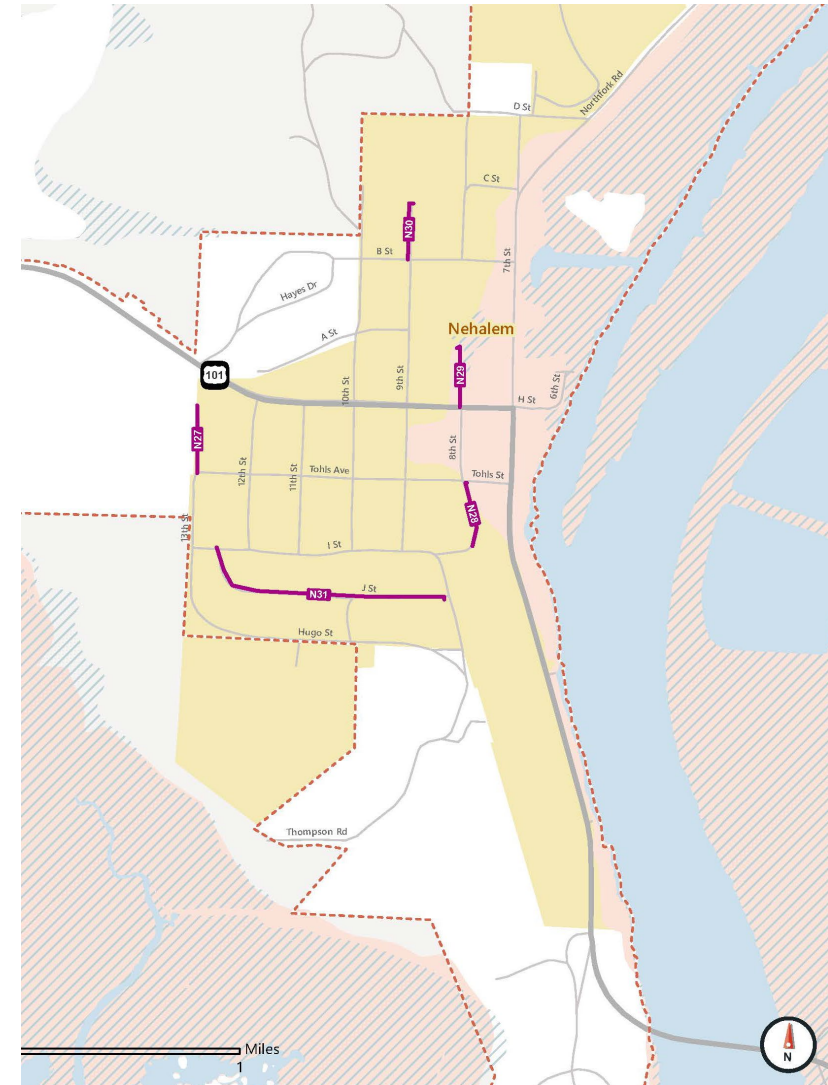


# Project Updates - Regional



# Project Updates - Nehalem

Project ID	Project Name & Description
N27	<b>13th Street Paving:</b> Pave unpaved sections of 13th Street.
N28	<b>8th Street Paving:</b> Pave unpaved sections of 8th Street.
N29	<b>8th Street Paving:</b> Pave unpaved sections of 8th Street.
N30	<b>9th Street Paving:</b> Pave unpaved sections of 9th Street.
N31	<b>J Street Paving:</b> Pave unpaved sections of J Street.





# Preferred Projects & Prioritization - Why?

- Align the project list with needs and priorities of the community
- Assure that the final project list is implementable
- Confirm the project list has support of local elected officials, project management team, advisory committee, and community
- Projects that advance most community goals are prioritized



# Preferred Projects & Prioritization - How?

1. Developed Project Evaluation Criteria based on goals and objectives.
2. Gathered input on criteria from Project Management Team & PAC.
3. Completed evaluation for all projects.
4. Confirmed alignment with PAC and community priorities.

# Preferred Projects & Prioritization - How?

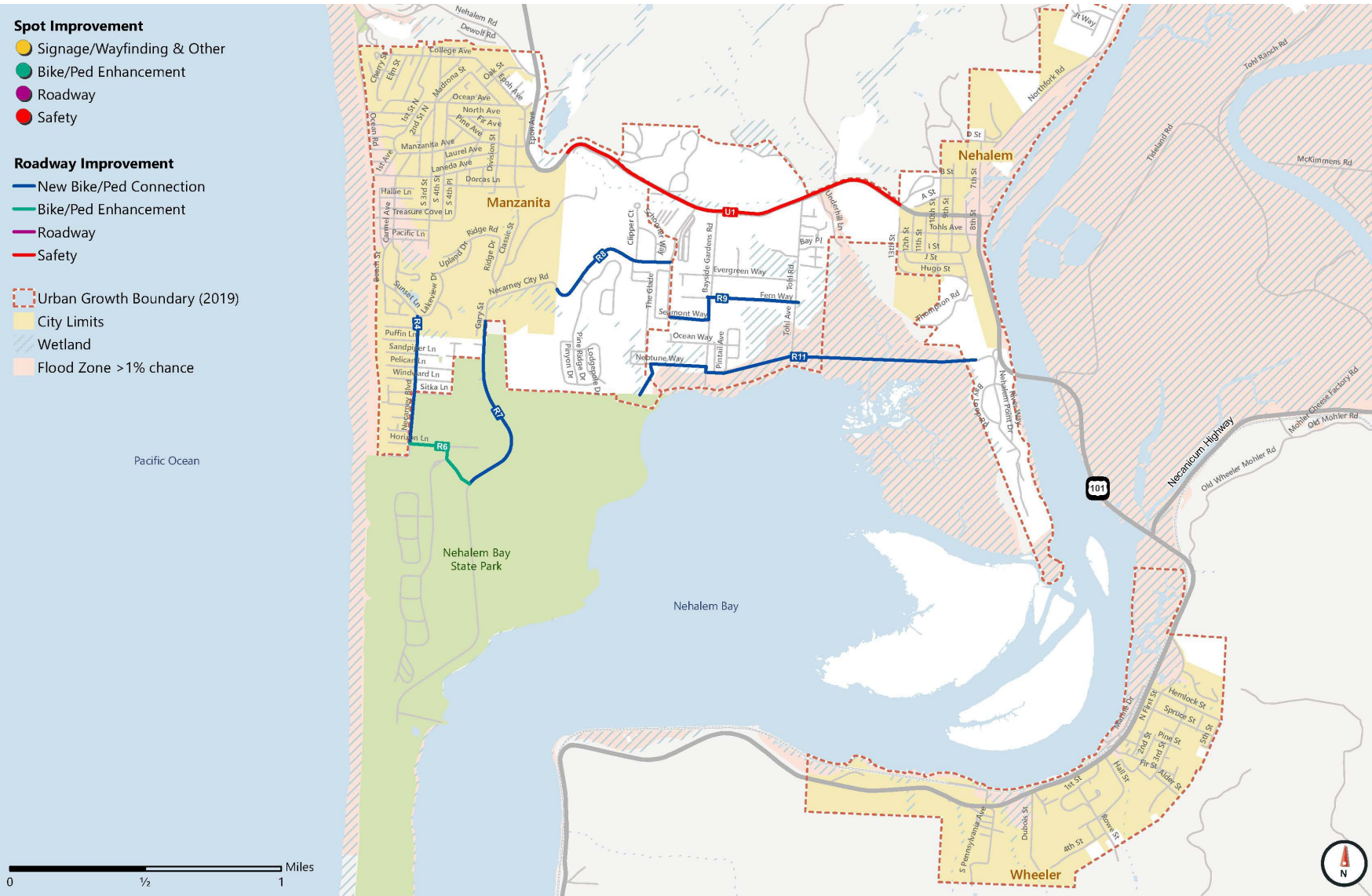
## City of Nehalem Evaluation Criteria

Regional Goal	Evaluation Criteria	Pts.	Scoring	
Create a transportation system that provides equitable multimodal access for underserved and vulnerable populations and balances the needs of local travelers and regional through-traffic.	<b>R1.1:</b> Project improves access for underserved or vulnerable populations.	4	Project provides new connection that meets ADA standards.	
		2	Project improves an existing connection to meet ADA standards.	
		0	Project does not create new ADA compliant connection or enhance existing infrastructure.	
	<b>R1.2:</b> Project improves a route predominately used by local travelers off US 101.	4	Project improves a local roadway to better meet the needs of all travelers.	
		0	Project does not improve a local roadway.	
	<b>R1.3:</b> Project improves the experience of people traveling through Nehalem Bay.	4	Project improves a regional route (US 101, connections to Nehalem Bay State Park, etc.) to better meet the needs of all travelers.	
		2	Project provides wayfinding signage on regional routes to direct regional travelers to local destinations, parking, etc..	
		0	Project does provide any of the above.	
	Create safer connections between the Nehalem Bay communities for people walking, biking, or using other non-auto modes and identify strategies to reduce crashes for all users when traveling on US 101.	<b>R2.1:</b> Project addresses a location with a history of fatal/severe injury crashes and/or bike/ped crashes.	4	Location with one or more fatal/severe injury crashes and/or bike/ped crashes in the past 5 years.
2			Location with one or more crashes of any type and severity in the past 5 years.	
0			Location with no crashes in the past 5 years.	
<b>R2.2:</b> Project creates new connections off US 101 between Nehalem Bay communities.		4	Project provides a new connection off of US 101 between communities.	
		0	Project does not provide any of the above.	
<b>R2.3:</b> Project includes a traffic calming element aimed at slowing vehicle traffic to improve safety and comfort for active transportation users.		4	Project adds a traffic calming element such as speed reduction measures, roadway narrowing, or sidewalk bulb outs.	
		0	Project does not provide any of the above.	
Collaborate with ODOT and Tillamook County to create a transportation system that is resilient to extreme weather events, able to safely accommodate evacuation and recovery efforts, and consistent with the goals and objectives of each City, Tillamook County, and the state.		<b>R3.1:</b> Project maintains or rebuilds critical infrastructure, or improves access for emergency vehicles.	4	Project provides a new connection out of a Tsunami zone, improving access and/or circulation for emergency vehicles.
			2	Project includes maintenance, repair, or seismic upgrades on U.S. 101, a bridge, or an identified evacuation route.
	0		Project does not provide any of the above.	
	<b>R3.2:</b> Project includes a maintenance component on local roads.	4	Project is outside the floodplain and therefore likely to have lower ongoing maintenance costs.	
		2	Project extends the lifespan of existing local facilities or reduces future maintenance needs such as pavement overlays, replacing and upgrading existing facilities, making signal improvements, or replacing signals with roundabouts.	
		0	Project does not provide any of the above.	
	<b>R3.3:</b> Project improves US 101 consistent with ODOT design guidance or other regional planning efforts.	4	Project would provide improvements to US 101 consistent with ODOT design guidance or other regional planning document.	
		0	Project does not provide any of the above.	
		4	Project may receive funding from non-local sources.	
Plan for a transportation system that is financially viable with consideration for life cycle costs by identifying new funding sources to make local dollars go farther.	<b>R4.1:</b> Project builds on investments in transportation funded primarily by entities other than the cities (state, regional, county).	2	Project would rely on local funding but would extend or improve facilities funded by other agencies.	
		0	Project would rely entirely on local funding.	
		4	Project is likely to qualify for grant funding.	
	<b>R4.2:</b> Project leverages grant funding opportunities.	0	Project is not likely to qualify for grant funding.	
Nehalem Goal	Evaluation Criteria	Pts.	Scoring	
Increase connectivity and fill infrastructure gaps for people walking and biking to access key destinations such as schools, restaurants, and the commercial core.	<b>N1.1:</b> Project improves safe access to school and recreational centers.	4	Project improves or creates a safe route for walking, biking, or taking transit to a school or recreational center.	
		0	Project does not provide any of the above.	
	<b>N1.2:</b> Project creates new connections for active transportation modes on local roadways.	4	Project provides a new connection or improves an existing connection for people walking or biking on a local roadway.	
		2	Project enhances an existing roadway to improve travel for people walking or biking on a local roadway.	
Increase access to recreational areas and water-based travel options while protecting the natural environment.	<b>N2.1:</b> Project would improve walking, biking, or watercraft access to natural areas and/or park	4	Pedestrian, bicycle, or watercraft-focused connection or wayfinding within 1/4 mile of a park or trail.	
		0	Project does not provide any of the above.	
	<b>N2.2:</b> Project provides wayfinding signage to connect travelers to natural areas and/or parks.	4	Project provides improved wayfinding signage for non-auto users connecting to local destinations.	
		0	Project does not provide any of the above.	

# High Priority Regional Projects

Project ID	Project Name & Description	Category	Enhance Quality of Life	Create Safe Connections	Plan for the Future	Support Fiscal Responsibility	Total Score
R7	<b>Gary Street Separated Facilities:</b> Construct paved shoulders for people biking and provide a separated path for people walking to connect people walking and biking between the Manzanita City Limits and Nehalem Bay State Park. Further analysis and coordination with Oregon State Parks would be required to identify final cross-section. This project should also include wayfinding to encourage visitors to walk and bike to the state park.	New Bike/Ped Connection	X	X	X	X	26
R8	<b>Necarney City Road Separated Facilities:</b> Construct paved shoulders with a striped buffer to provide space for people biking on the roadway and construct a separated path to separate people walking from cyclists and vehicles.	New Bike/Ped Connection	X	X	X	X	26
R11	<b>Nehalem Point to Nehalem State Park Bicycle &amp; Pedestrian Connection:</b> Construct a paved trail connecting people walking and biking from Nehalem to Nehalem State Park off of US 101.	New Bike/Ped Connection	X	X	X	X	24
R15	<b>North County Flex Route:</b> Coordinate with Tillamook County Transportation District to operate flex-route service between Nehalem, Manzanita, Wheeler, Nehalem Bay State Park, and Oswald West State Park.	Transit	X	X	X	X	24
R9	<b>Fern Way/Seamont Way Bicycle &amp; Pedestrian Connection:</b> Enhance signing, striping, and wayfinding to create a connection from Tohl Avenue to The Promenade to create bicycle and pedestrian connections off of US 101.	New Bike/Ped Connection	X	X	X	X	24
U1	<b>Widen US 101 Shoulders &amp; Add Rumble Strips:</b> Widen shoulders on US 101 to ODOT standard to support bicycle travel and add rumble strips to improve safety.	Safety	X	X	X	X	24
R16	<b>Regional Water Taxi:</b> Explore options to operate a regional water taxi with stops in Nehalem, Wheeler and Nehalem Bay State Park to connect local destinations and enhance tourism.	Other	X	X	X	X	20
R17	<b>Seasonal Circulator Shuttle:</b> Coordinate with the Tillamook County Transportation District to operate a seasonal circulator providing service between Manzanita, Nehalem, Wheeler, and Mohler with stops at Nehalem Bay State Park and Neahkahnie Trailhead. This route could be operated with trolleys to enhance visitor experience.	Transit	X	X	X	X	20
R4	<b>Necarney Boulevard Bicycle Connection:</b> Provide bicycle sharrows along other elements aimed at speed management to connect people biking from the existing bicycle facility at Lakeview Drive to Nehalem Bay State Park.	Bike/Ped Enhancement	X		X	X	20
R6	<b>Horizon Lane Bicycle &amp; Pedestrian Enhancements:</b> Enhance Horizon Lane with signing and striping to identify space for people walking and biking.	Bike/Ped Enhancement	X	X	X	X	20

# High Priority Regional Projects

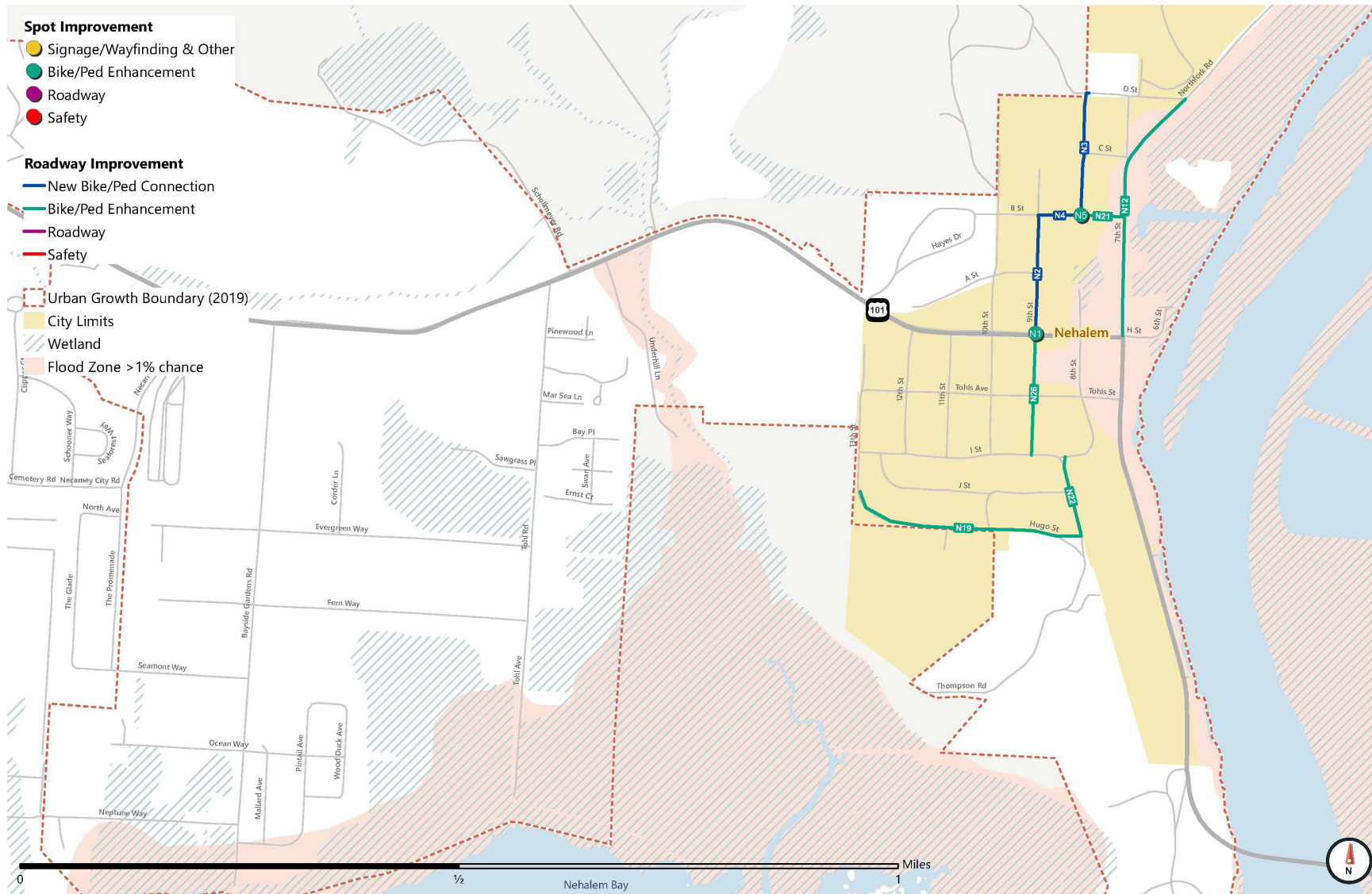


# High Priority Nehalem Projects

Project ID	Project Name & Description	Category	Enhance Quality of Life	Create Safe Connections	Plan for the Future	Support Fiscal Responsibility	Connect Local Destinations	Access to the Natural Environment	Total Score
N1	<b>9th Street Crossing Enhancements:</b> Enhance pedestrian visibility and shorten the crossing distance by providing pedestrian-scale lighting, curb extensions, bollards, or planters.	Bike/Ped Enhancement	X	X	X	X	X		28
N2	<b>9th Street Pedestrian Facilities:</b> Connect people walking on 9th Street to NCRD and the schools by constructing sidewalks.	New Bike/Ped Connection	X	X	X	X	X	X	28
N3	<b>8th Street Pedestrian Facilities:</b> Connect people walking on 8th Street to NCRD and the schools by constructing sidewalks or providing a wide shoulder.	New Bike/Ped Connection	X	X	X	X	X	X	28
N12	<b>7th Street Bicycle &amp; Pedestrian Enhancements:</b> Enhance 7th Street with signing and striping to identify space for people walking and biking.	Bike/Ped Enhancement	X	X		X	X	X	26
N19	<b>Hugo Street Bicycle &amp; Pedestrian Enhancements:</b> Enhance Hugo Street with signing and striping to identify space for people walking and biking and to create a connection to planned trails.	Bike/Ped Enhancement	X	X	X	X	X	X	26
N21	<b>B Street Bicycle &amp; Pedestrian Enhancements:</b> Enhance B Street with signing and striping to identify space for people walking and biking.	Bike/Ped Enhancement	X	X	X	X	X	X	26
N22	<b>8th/9th Street Bicycle &amp; Pedestrian Enhancements:</b> Enhance 8th and 9th Street with signing and striping to identify space for people walking and biking.	Bike/Ped Enhancement	X	X	X	X	X	X	26
N26	<b>9th Street Bicycle &amp; Pedestrian Enhancements:</b> Enhance 9th Street with signing and striping to identify space for people walking and biking.	Bike/Ped Enhancement	X	X	X	X	X	X	26
N4	<b>B Street Pedestrian Facilities:</b> Connect people walking on B Street to NCRD and the schools by constructing sidewalks or providing a wide shoulder.	New Bike/Ped Connection	X		X	X	X	X	24
N5	<b>B Street Crossing:</b> Alert drivers of school children crossing by providing high-visibility crosswalks.	Bike/Ped Enhancement	X	X	X	X	X		24



# High Priority Nehalem Projects



# Discussion & Questions

- Do you have any concerns with the projects on this list?
- Do the top performing projects align with what you see as priorities for the community?
- Is there anything missing from the project list?
- Other questions or feedback on the project list?





# Next Steps

- Draft TSP
- Community Open House
- Planning Commission/City Council Briefing
- Final TSP
- TSP Adoption Process

# Thank You!

**Kara Hall**

**Consultant Project Manager**

Fehr & Peers Portland

[k.hall@fehrandpeers.com](mailto:k.hall@fehrandpeers.com)

503-416-7287

**Ken Shonkwiler**

**Senior Region Planner**

ODOT Region 2

[Kenneth.d.Shonkwiler@odot.state.or.us](mailto:Kenneth.d.Shonkwiler@odot.state.or.us)

503-325-5281