

Nehalem Bay TSP Planning Commission Workshop

City of Wheeler

May 12th, 2022



Agenda

15 minutes

Introductions, Agenda Review, and Meeting Purpose

10 minutes

Nehalem Bay TSP: Project Update

50 minutes

Presentation & Discussion: Projects & Priorities

5 minutes

Public Comment

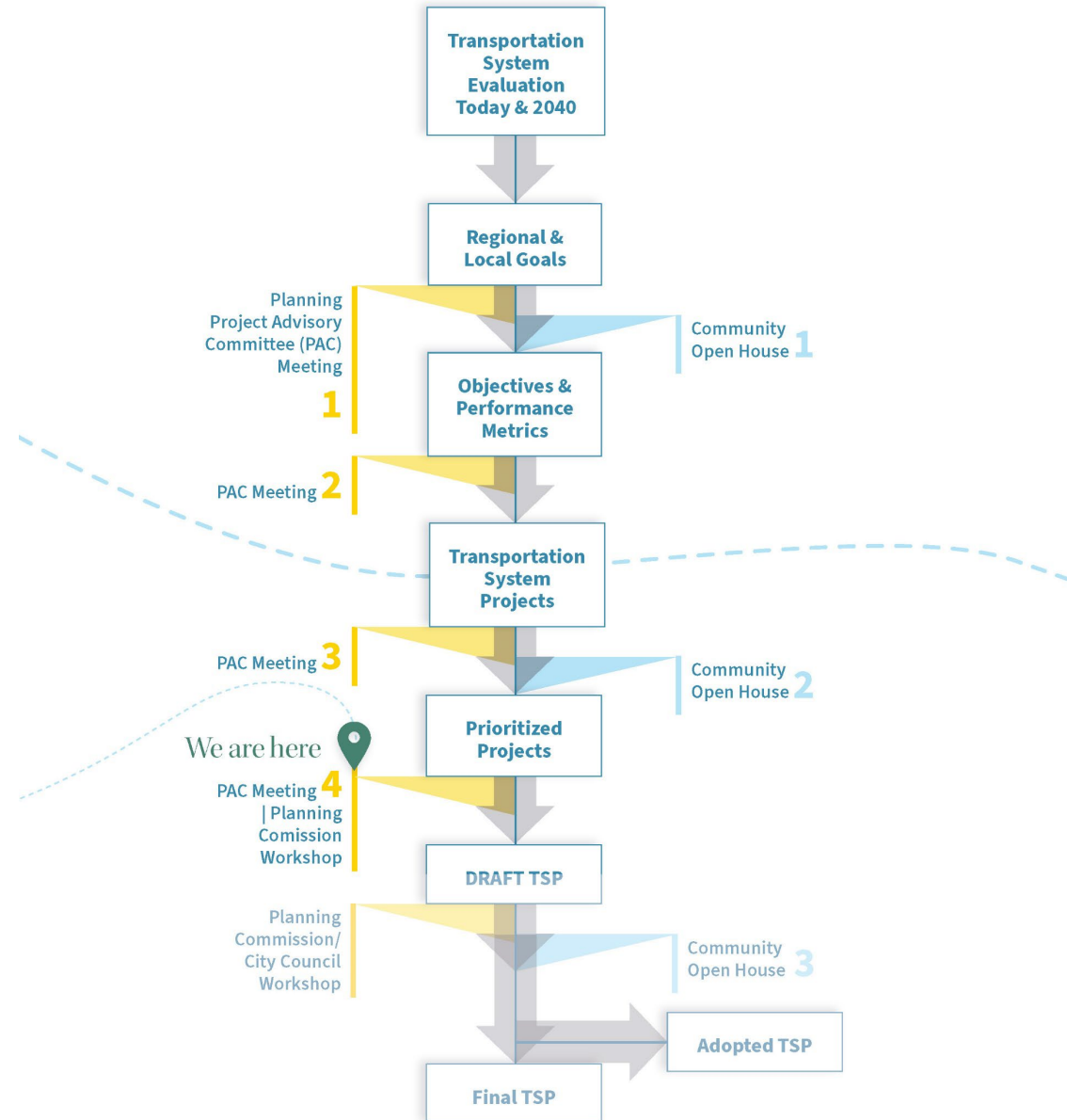
10 minutes

Next Steps

Meeting Purpose

- Provide an update on the Nehalem Bay TSP to Planning Commission.
- Share what we have heard from community members.
- Gather Planning Commission input on project list and priorities.

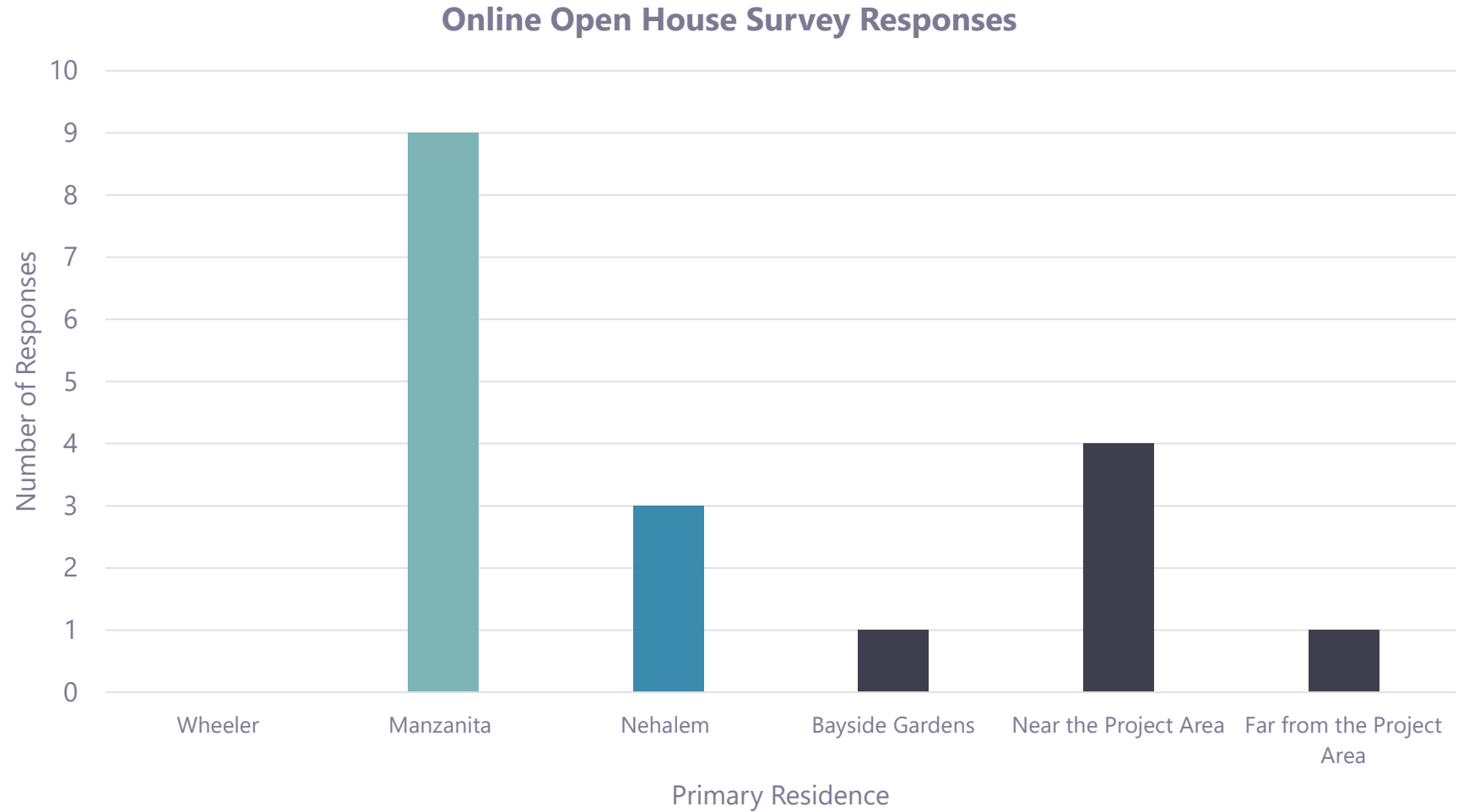
TSP Project Milestones



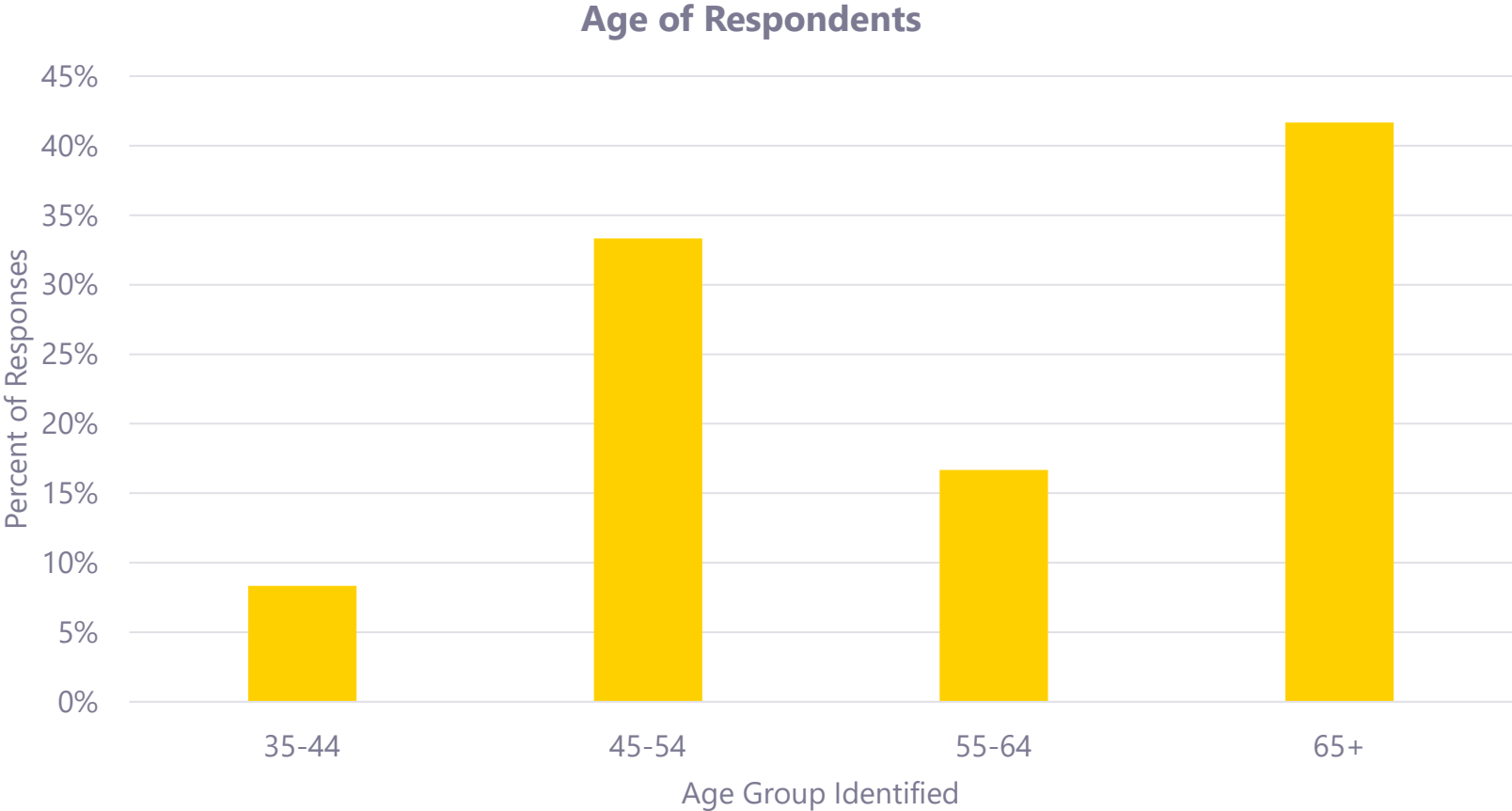
Community Conversations & Online Open House

- Online Open House January 25th through February 28th
- Paired with Community Conversation on January 25th
- Opportunity to provide input on:
 - Goals & Objectives
 - Regional Projects
 - Local Projects

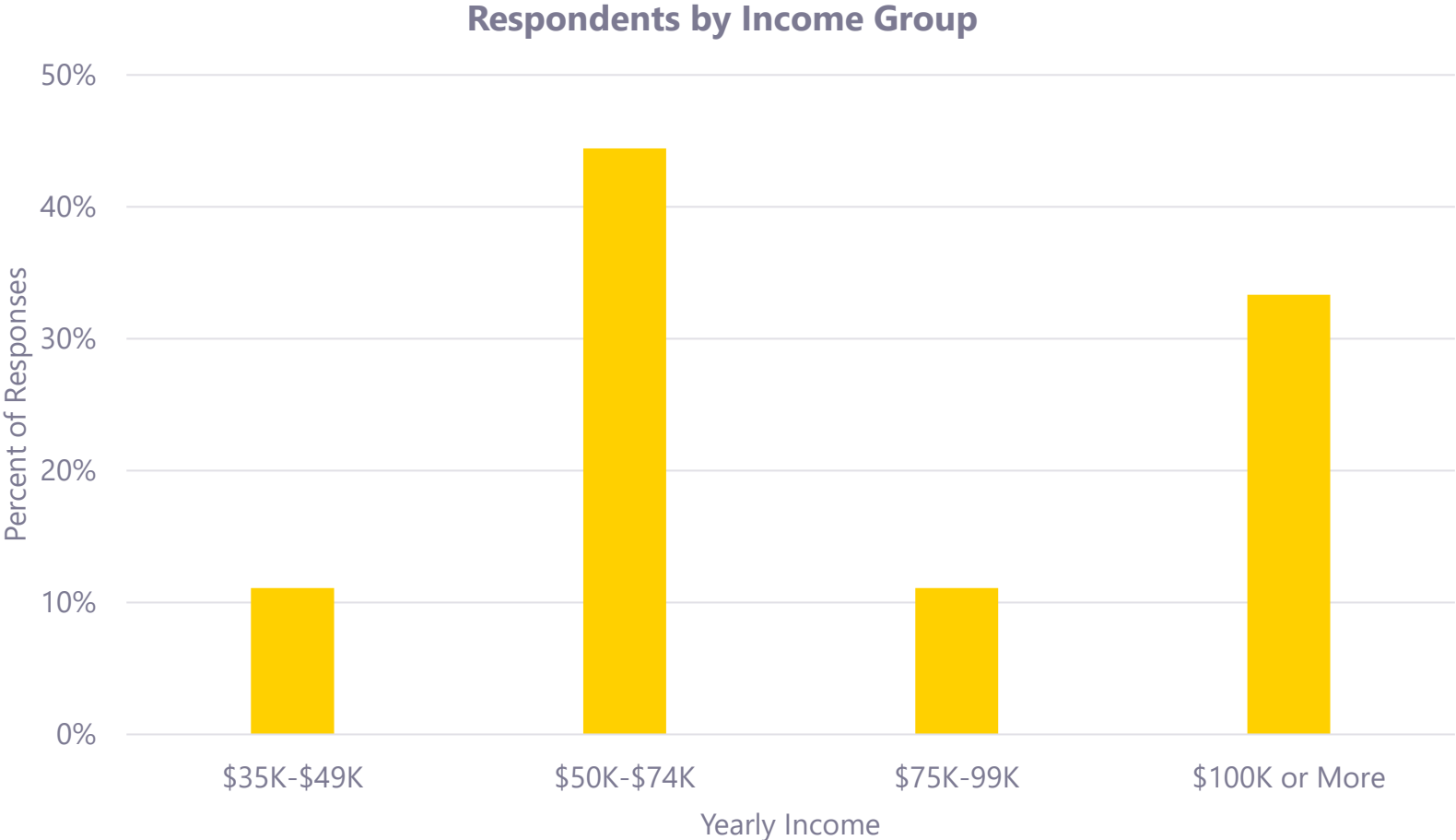
Who We Reached



Who We Reached



Who We Reached

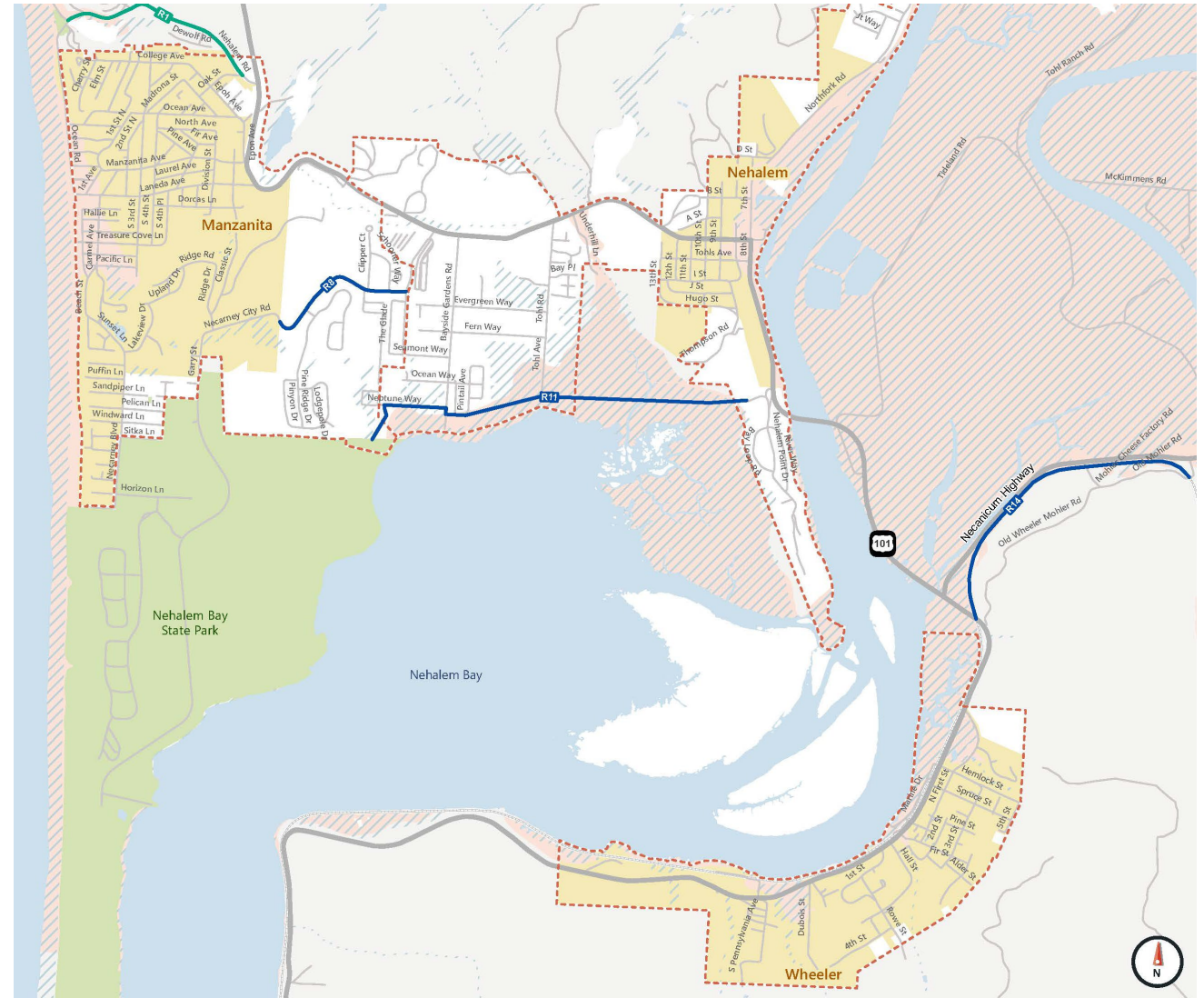


Key Takeaways – Regional Projects

- Bicycle and pedestrian infrastructure is a high priority for community members
- Bicycle and pedestrian access to the state park will help move visitors without cars
- Several roadways in the County feel unsafe for bicycles and pedestrians (Necarney City Road, Nehalem Road)
- As growth continues and the number of visitors increase, more options for travel will be needed

High Priority Projects - Regional

- Nehalem Road Bicycle & Pedestrian Enhancements
- Necarney City Road Bicycle & Pedestrian Improvements
- Mohler Trail Connection
- Nehalem Point to Nehalem State Park Bicycle & Pedestrian Connection
- Oregon Coast Trail Realignment

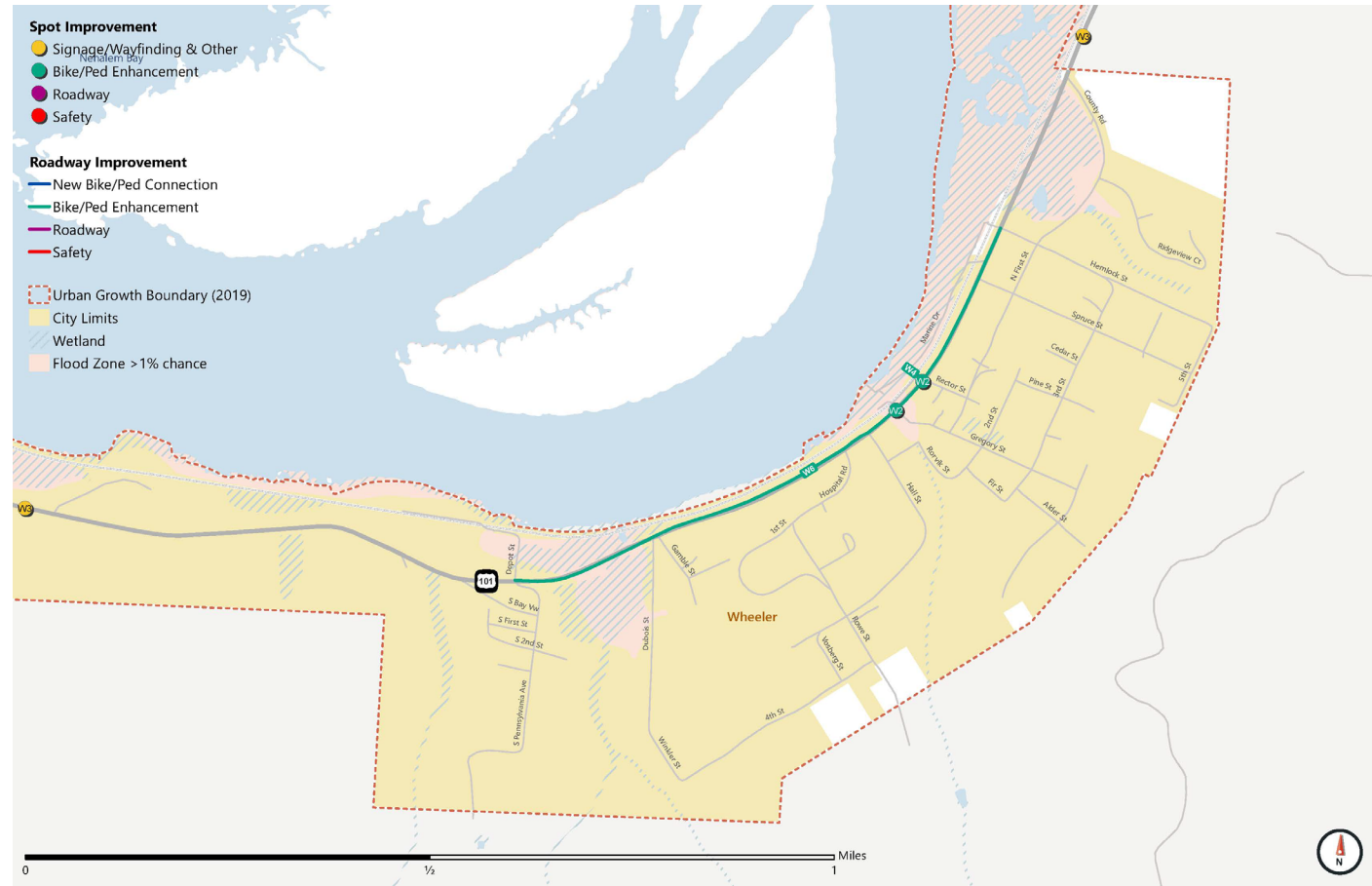


Key Takeaways – Wheeler Projects

- Desire for investment in the Salmonberry Trail
- Sidewalk improvements should be prioritized to improve access to businesses and residential areas
- Concern about sharrows on US 101 as a short-term solution
- Slowing traffic through Wheeler is important to improving safety and comfort for people walking and biking

High Priority Projects – Wheeler

- Enhance US 101 Crossings
- Citywide Sidewalk Improvements
- US 101 Bicycle Lanes
- Enhanced Railroad Crossing
- Gateway to Wheeler



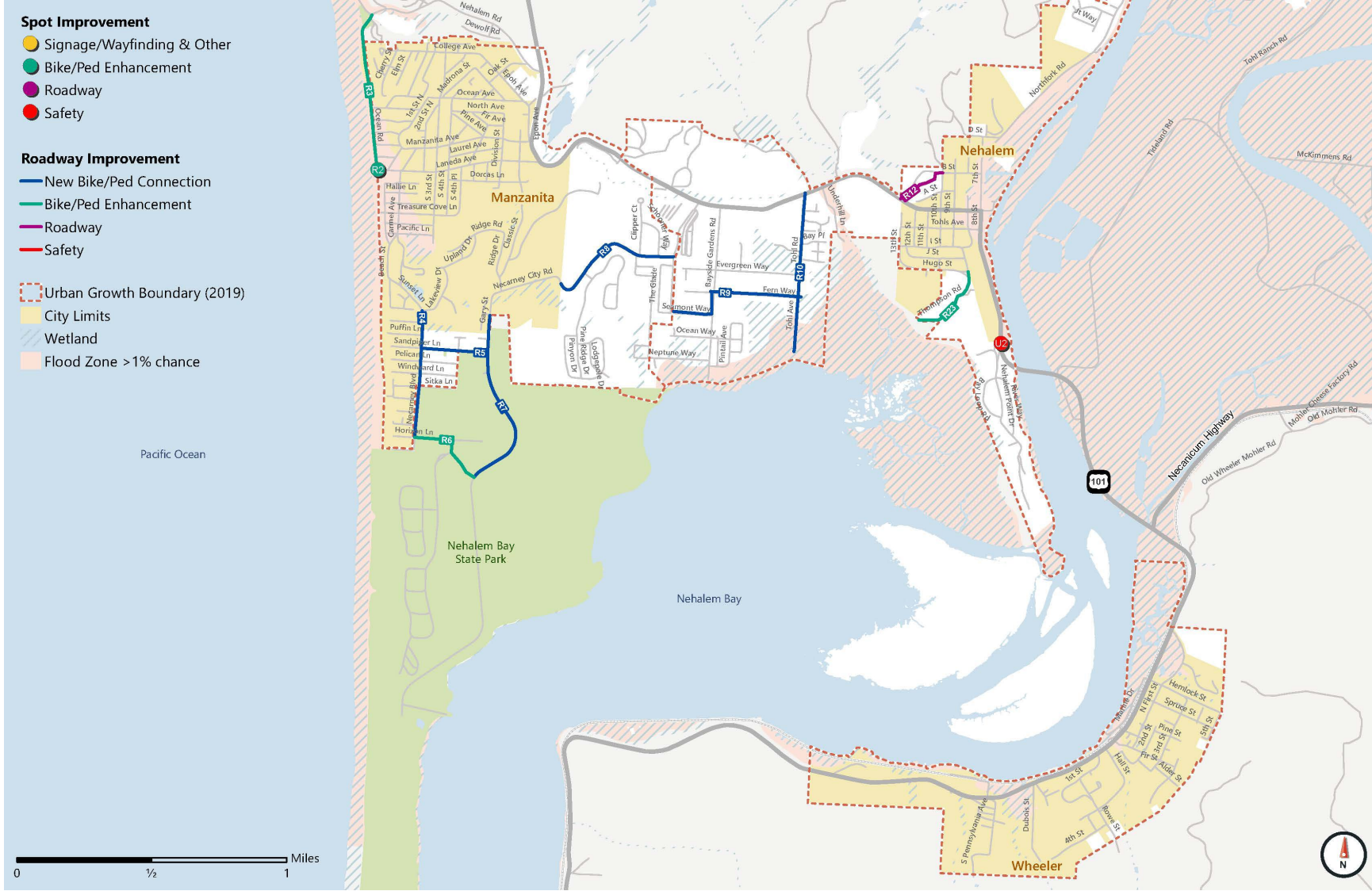
Projects & Priorities

- Project updates based on community input.
- Why projects were prioritized.
- How projects were prioritized.
- Project discussion:
 - Do you have any concerns with the projects on this list?
 - Do the top performing projects align with what you see as priorities for the community?
 - Is there anything missing from the project list?

Project Updates - Regional

Project ID	Project Name & Description
R7	Gary Street Separated Facilities: Construct paved shoulders for people biking and provide a separated path for people walking to connect people walking and biking between the Manzanita City Limits and Nehalem Bay State Park. Further analysis and coordination with Oregon State Parks would be required to identify final cross-section. This project should also include wayfinding to encourage visitors to walk and bike to the state park.
R8	Necarney City Road Separated Facilities: Construct paved shoulders with a striped buffer to provide space for people biking on the roadway and construct a separated path to separate people walking from cyclists and vehicles.
R15	North County Flex Route: Coordinate with Tillamook County Transportation District to operate flex-route service between Nehalem, Manzanita, Wheeler, Nehalem Bay State Park, and Oswald West State Park.
R9	Fern Way/Seamont Way Bicycle & Pedestrian Connection: Enhance signing, striping, and wayfinding to create a connection from Tohl Avenue to The Promenade to create bicycle and pedestrian connections off of US 101.
R17	Seasonal Circulator Shuttle: Coordinate with the Tillamook County Transportation District to operate a seasonal circulator providing service between Manzanita, Nehalem, Wheeler, and Mohler with stops at Nehalem Bay State Park and Neahkahn Trailhead. This route could be operated with trolleys to enhance visitor experience.
R4	Necarney Boulevard Bicycle Connection: Provide bicycle sharrows along other elements aimed at speed management to connect people biking from the existing bicycle facility at Lakeview Drive to Nehalem Bay State Park.
R6	Horizon Lane Bicycle & Pedestrian Enhancements: Enhance Horizon Lane with signing and striping to identify space for people walking and biking.
R10	Tohl Avenue Bicycle & Pedestrian Enhancements: Enhance Tohl Avenue with signing, striping, and wayfinding to enhance connections from Nehalem to Manzanita off of US 101.
R5	Gary Street to Necarney Boulevard Connection: Construct a multiuse trail with wayfinding to connect people walking and biking between Necarney Boulevard and Gary Street north of Nehalem Bay State Park. The multiuse trail would serve as a connection for people walking and biking in the area until development occurs connecting either Puffin Lane or Sandpiper Lane.
R12	Hayes Drive Improvements: Improve the quality of B Street to create a more reliable connection to US 101 during seasonal flooding.
R3	Ocean Road Bicycle & Pedestrian Enhancements: Enhance Ocean Avenue with signing and striping to identify space for people walking and biking.
R2	Ocean Road Crossing Enhancements: Enhance crossing Ocean Road crossing at Laneda Avenue with high-visibility markings and advance signage to alert drivers of crossing.
R21	Regional Wayfinding: Coordinate within the region to deploy wayfinding, maps, and signage that connects visitors to key destinations like Nehalem Bay State Park, local downtowns, and the Nehalem River.
R23	Thompson Road Bicycle & Pedestrian Enhancements: Enhance Thompson Street with signing and striping to identify space for people walking and biking and to create a connection to planned trails.
U2	US 101 & Nehalem Point Drive Intersection Improvements: Provide a two-way left-turn lane for drivers turning left onto Nehalem Point Drive and adjacent driveways to address crashes occurring at this intersection.

Project Updates - Regional



Preferred Projects & Prioritization - Why?

- Align the project list with needs and priorities of the community
- Assure that the final project list is implementable
- Confirm the project list has support of local elected officials, project management team, advisory committee, and community
- Projects that advance most community goals are prioritized



Preferred Projects & Prioritization - How?

1. Developed Project Evaluation Criteria based on goals and objectives.
2. Gathered input on criteria from Project Management Team & PAC.
3. Completed evaluation for all projects.
4. Confirmed alignment with PAC and community priorities.

Preferred Projects & Prioritization - How?

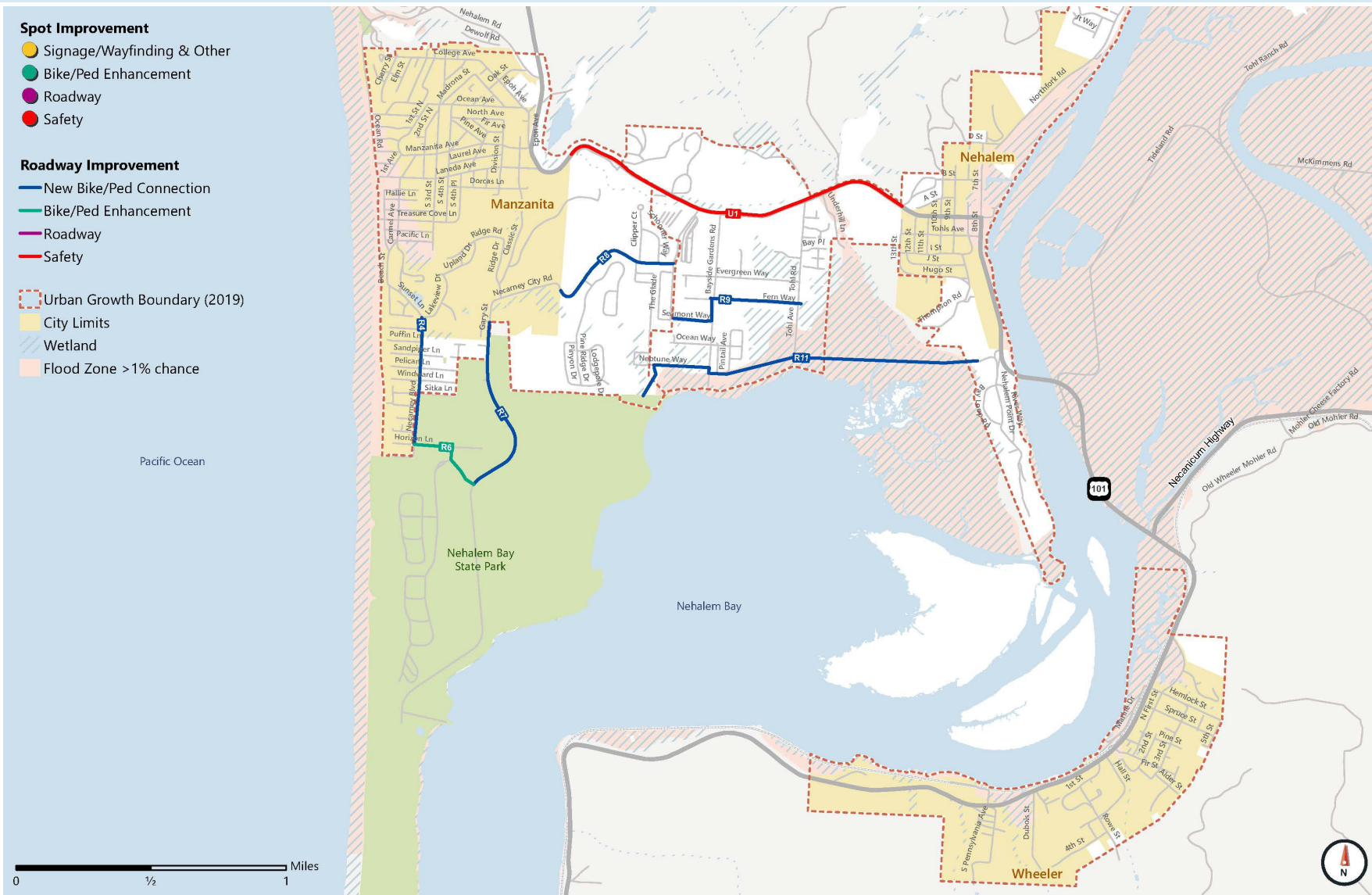
City of Wheeler Evaluation Criteria

Regional Goal	Evaluation Criteria	Pts.	Scoring		
Create a transportation system that provides equitable multimodal access for underserved and vulnerable populations and balances the needs of local travelers and regional through-traffic.	R1.1: Project improves access for underserved or vulnerable populations.	4	Project provides new connection that meets ADA standards.		
		2	Project improves an existing connection to meet ADA standards.		
		0	Project does not create new ADA compliant connection or enhance existing infrastructure.		
	R1.2: Project improves a route predominately used by local travelers off US 101.	4	Project improves a local roadway to better meet the needs of all travelers.		
		0	Project does not improve a local roadway.		
		4	Project improves a regional route (US 101, connections to Nehalem Bay State Park, etc.) to better meet the needs of all travelers.		
	R1.3: Project improves the experience of people traveling through Nehalem Bay.	2	Project provides wayfinding signage on regional routes to direct regional travelers to local destinations, parking, etc..		
		0	Project does provide any of the above.		
		4	Location with one or more fatal/severe injury crashes and/or bike/ped crashes in the past 5 years.		
Create safer connections between the Nehalem Bay communities for people walking, biking, or using other non-auto modes and identify strategies to reduce crashes for all users when traveling on US 101.	R2.1: Project addresses a location with a history of fatal/severe injury crashes and/or bike/ped crashes.	2	Location with one or more crashes of any type and severity in the past 5 years.		
		0	Location with no crashes in the past 5 years.		
		4	Project provides a new connection off of US 101 between communities.		
	R2.2: Project creates new connections off US 101 between Nehalem Bay communities.	0	Project does not provide any of the above.		
		4	Project adds a traffic calming element such as speed reduction measures, roadway narrowing, or sidewalk bulb outs.		
		0	Project does not provide any of the above.		
	Collaborate with ODOT and Tillamook County to create a transportation system that is resilient to extreme weather events, able to safely accommodate evacuation and recovery efforts, and consistent with the goals and objectives of each City, Tillamook County, and the state.	R3.1: Project maintains or rebuilds critical infrastructure; or improves access for emergency vehicles.	4	Project provides a new connection out of a Tsunami zone, improving access and/or circulation for emergency vehicles.	
			2	Project includes maintenance, repair, or seismic upgrades on U.S. 101, a bridge, or an identified evacuation route.	
			0	Project does not provide any of the above.	
R3.2: Project includes a maintenance component on local roads.		4	Project is outside the floodplain and therefore likely to have lower ongoing maintenance costs.		
		2	Project extends the lifespan of existing local facilities or reduces future maintenance needs such as pavement overlays, replacing and upgrading existing facilities, making signal improvements, or replacing signals with roundabouts.		
		0	Project does not provide any of the above.		
R3.3: Project improves US 101 consistent with ODOT design guidance or other regional planning efforts.		4	Project would provide improvements to US 101 consistent with ODOT design guidance or other regional planning document.		
		0	Project does not provide any of the above.		
		4	Project may receive funding from non-local sources.		
Plan for a transportation system that is financially viable with consideration for life cycle costs by identifying new funding sources to make local dollars go farther.	R4.1: Project builds on investments in transportation funded primarily by entities other than the cities (state, regional, county).	2	Project would rely on local funding but would extend or improve facilities funded by other agencies.		
		0	Project would rely entirely on local funding.		
		4	Project is likely to qualify for grant funding.		
	R4.2: Project leverages grant funding opportunities.	0	Project is not likely to qualify for grant funding.		
		Wheeler Goal	Evaluation Criteria	Pts.	Scoring
		Improve walking and biking safety, connections, and wayfinding within Wheeler.	W1.1: Project builds or enhances sidewalks or crossings in the commercial core or as a connection to key local destinations.	4	Project constructs a sidewalk or marked crossing, consistent with design criteria, in Wheeler's commercial core or connecting to a key destination such as a hospital or transit stop.
2	Project enhances and existing sidewalk or crossing in Wheeler's commercial core or connecting a key destination such as a hospital or transit stop.				
0	Project does not provide any of the above.				
W1.2: Project includes streetscape improvements or wayfinding improvements.	4		Project adds landscaping, pedestrian-scale lighting, benches, wayfinding, and/or street trees.		
	0		Project does not provide any of the above.		
	4		Project improves pedestrian and/or bicycle access on a roadway that connects to a natural area and/or park.		
Support economic vibrancy by creating connections to recreational opportunities and new forms of local tourism while protecting the natural beauty that draws visitors to Wheeler.	W2.1: Project would improve walking, biking, or watercraft access to natural areas and/or parks.	0	Project does not provide any of the above.		
		W2.2: Project minimizes runoff by not increasing the amount of impervious surface within Wheeler.	4	Project does not increase the amount of impervious surface within the City.	
			0	Project increases the amount of impervious surface within the City.	

High Priority Regional Projects

Project ID	Project Name & Description	Category	Enhance Quality of Life	Create Safe Connections	Plan for the Future	Support Fiscal Responsibility	Total Score
R7	Gary Street Separated Facilities: Construct paved shoulders for people biking and provide a separated path for people walking to connect people walking and biking between the Manzanita City Limits and Nehalem Bay State Park. Further analysis and coordination with Oregon State Parks would be required to identify final cross-section. This project should also include wayfinding to encourage visitors to walk and bike to the state park.	New Bike/Ped Connection	X	X	X	X	26
R8	Necarney City Road Separated Facilities: Construct paved shoulders with a striped buffer to provide space for people biking on the roadway and construct a separated path to separate people walking from cyclists and vehicles.	New Bike/Ped Connection	X	X	X	X	26
R11	Nehalem Point to Nehalem State Park Bicycle & Pedestrian Connection: Construct a paved trail connecting people walking and biking from Nehalem to Nehalem State Park off of US 101.	New Bike/Ped Connection	X	X	X	X	24
R15	North County Flex Route: Coordinate with Tillamook County Transportation District to operate flex-route service between Nehalem, Manzanita, Wheeler, Nehalem Bay State Park, and Oswald West State Park.	Transit	X	X	X	X	24
R9	Fern Way/Seamont Way Bicycle & Pedestrian Connection: Enhance signing, striping, and wayfinding to create a connection from Tohl Avenue to The Promenade to create bicycle and pedestrian connections off of US 101.	New Bike/Ped Connection	X	X	X	X	24
U1	Widen US 101 Shoulders & Add Rumble Strips: Widen shoulders on US 101 to ODOT standard to support bicycle travel and add rumble strips to improve safety.	Safety	X	X	X	X	24
R16	Regional Water Taxi: Explore options to operate a regional water taxi with stops in Nehalem, Wheeler and Nehalem Bay State Park to connect local destinations and enhance tourism.	Other	X	X	X	X	20
R17	Seasonal Circulator Shuttle: Coordinate with the Tillamook County Transportation District to operate a seasonal circulator providing service between Manzanita, Nehalem, Wheeler, and Mohler with stops at Nehalem Bay State Park and Neahkahnie Trailhead. This route could be operated with trolleys to enhance visitor experience.	Transit	X	X	X	X	20
R4	Necarney Boulevard Bicycle Connection: Provide bicycle sharrows along other elements aimed at speed management to connect people biking from the existing bicycle facility at Lakeview Drive to Nehalem Bay State Park.	Bike/Ped Enhancement	X		X	X	20
R6	Horizon Lane Bicycle & Pedestrian Enhancements: Enhance Horizon Lane with signing and striping to identify space for people walking and biking.	Bike/Ped Enhancement	X	X	X	X	20

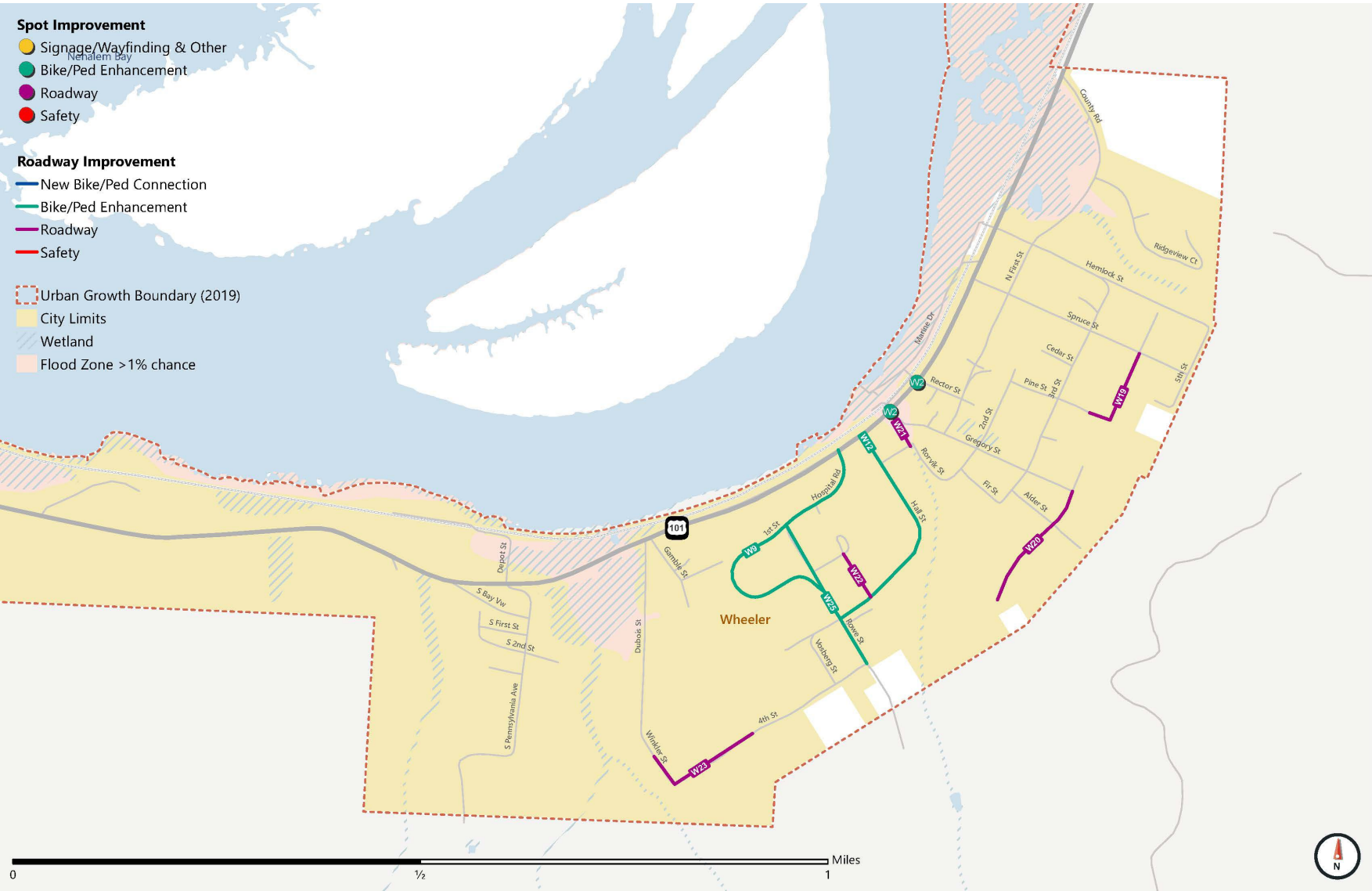
High Priority Regional Projects



High Priority Wheeler Projects

Project ID	Project Name & Description	Category	Enhance Quality of Life	Create Safe Connections	Plan for the Future	Support Fiscal Responsibility	Manage Access	Enhance Economic Vibrancy	Total Score
W1	Citywide Sidewalk Improvements: Improve access to local destinations and ADA access by improving existing sidewalks on US 101, Gregory Street, and Rorvik Street.	Bike/Ped Enhancement	X	X	X	X	X	X	32
W2	Enhance US 101 Crossings: Enhance US 101 crossings by providing high-visibility crosswalks and improving illumination.	Bike/Ped Enhancement	X	X	X	X	X	X	32
W9	Hospital Road Enhancements: Enhance Hospital Road and surrounding the City-owned land (future park) with signing and striping to identify space for people walking and biking.	Bike/Ped Enhancement	X	X	X	X	X	X	28
W12	Hall Street Bicycle & Pedestrian Enhancements: Enhance Hall Street from US 101 to Rowe Street with signing and striping to identify space for people walking and biking.	Bike/Ped Enhancement	X	X	X	X		X	24
W19	4th Street Connection: Connect 4th Street from Spruce Street to Pine Street.	Roadway	X	X	X		X	X	24
W20	4th Street Paving: Pave 4th Street from Gregory Street to Rorvik Street and from Davis Street to Rowe Street.	Roadway	X	X	X		X	X	24
W21	Rorvik Street Paving: Pave Rorvik Street from 1st Street to 2nd Street.	Roadway	X	X	X		X	X	24
W22	Akin Street Paving: Connect and Pave Akin Street from 2nd Street to 3rd Street.	Roadway	X	X	X		X	X	24
W23	Winkler Street Improvements: Improve the condition of Winkler Street from 4th Street to Dubois Street.	Roadway	X	X	X		X	X	24
W24	Rowe Street Improvements: Improve pavement condition and enhance Rowe Street with signing and striping to identify space for people walking and biking.	Roadway	X	X	X		X	X	24

High Priority Wheeler Projects



Discussion & Questions

- Do you have any concerns with the projects on this list?
- Do the top performing projects align with what you see as priorities for the community?
- Is there anything missing from the project list?
- Other questions or feedback on the project list?



Next Steps

- Draft TSP
- Community Open House
- Planning Commission/City Council Briefing
- Final TSP
- TSP Adoption Process

Thank you!

Sarah Peters

Wheeler Community Lead

Fehr & Peers Portland

s.peters@fehrandpeers.com

503-416-7282

Ken Shonkwiler

Senior Region Planner

ODOT Region 2

Kenneth.d.Shonkwiler@odot.state.or.us

503-325-5281