



King City

SPRING 2020

Transportation System Plan and Land Use Refinement Plan

Help us plan for King City's growing transportation needs—for now and the future.



Help us shape our first Transportation System Plan

This is our first formal Transportation System Plan. Until now, most major roads in town have been managed by other jurisdictions, such as ODOT, but that's about to change.

Our population more than doubled in the last 20 years, approaching 5,000. It could double again in another 20 years. The City is planning for gradual growth west to Roy Rogers Road, which will add to city-owned roads. Just as we're planning land use, we must plan for how everyone will get around.

The TSP will include a *whole* framework for a safe, well-connected transportation system: policies, standards, network maps, a capital projects list and more. We need your help finding the best ways to serve people walking, biking, using transit, and driving.

For more information: **Michael J. Weston II** City of King City, City Manager

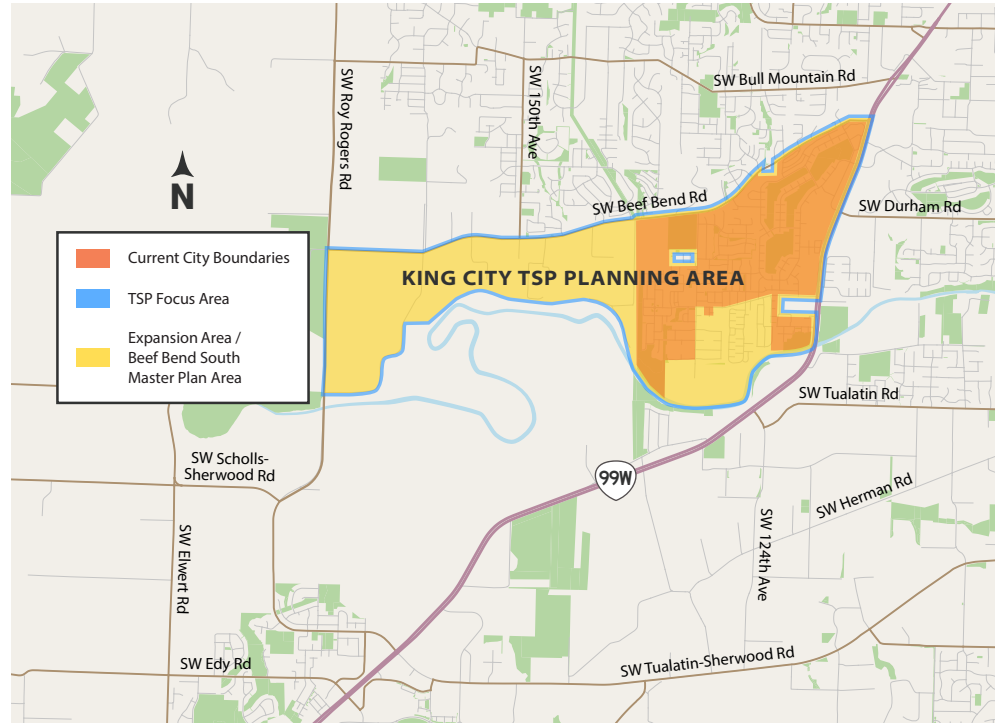
503-639-4082 | mweston@ci.king-city.or.us | www.kingcitytsp.org

What area will the plan consider?

This project is for all of King City, including the developing western expansion area. We will consider how people get to our commercial core and underdeveloped areas, and plan for “complete streets” everywhere in town.

We’ll look especially closely at the roads people use most, including SW Beef Bend Road, SW Roy Rogers Road, and Pacific Highway West (99W). We’ll assess how to make their key intersections safer, more reliable and less congested.

Project area map



We need your help!

We need your feedback to shape this plan.

- What it’s like for you to get around King City today?
- Which places do you wish you could travel to?
- Are there ways you would like to get around but currently can’t?

We invite all big ideas and input for the future of King City’s transportation system.

To draft a plan for everyone, we need feedback from everyone. We are committed to engaging community members of all incomes and backgrounds, including those who use assistance to get around or who speak other languages.

Even amid COVID-19, the project will offer healthy, yet engaging opportunities for community input. The latest public engagement opportunities can be found at: www.kingcitytsp.org

Stay In Touch

Visit www.kingcitytsp.org for the latest updates, schedule and opportunities to weigh in!

King City Beef Bend South Master Plan Project

A separate but related project is just getting started—the King City Beef Bend South Master Plan Project. Instead of working separately, the city and Consultants will work closely to build one consistent vision for a healthy, thriving community. More on that project: www.ci.king-city.or.us