

## Project overview

The Central Lane region is underway with a regional planning effort to integrate three plans as part of one cohesive effort. It will consider a range of transportation options to better connect people to where they want to go in Eugene, Springfield and Coburg: The Regional Transportation Plan (RTP), the Congestion Management Process (CMP), and the Intelligent Transportation System (ITS) plan.

### What's the difference between these plans?

The region's quality of life and economic vitality is closely tied to demand for all types of transportation: roadways, transit, bikeways and pedestrian circulation, as well as freight movement and regional aspects of air, rail and inter-city bus service. The **RTP** brings it all together, integrating changes in all these modes for the next 20 years.

In normal circumstances, the region's roads are often congested. The **CMP**:

- Identifies causes of recurring and irregular congestion.
- Develops methods to monitor and evaluate all traffic types.
- Creates and measures strategies to reduce congestion.

Intelligent transportation systems help transportation work smoothly. For example, an app on your phone can tell you how soon the next bus is coming. But what if the same app could give you that information for more than one bus system when you need to transfer? The **ITS** plan:

- Describes the current state of ITS in the region.
- Identifies the region's transit agencies and other stakeholders.
- Creates a model and requirements for existing systems and subsystems to work with each other.



## Project outcomes

- A single, regional document that outlines identified needs, goals, priorities, and opportunities for improved movement of people and goods around the region.
- Identify strategies to increase access to housing and jobs through improved transportation options.
- Identify strategies to improve transportation for all people, including vulnerable and low-income populations.
- Integrate a range of transportation options and technologies.
- Develop a sustainable transportation system and reduce CO2 emissions by increasing access to active transportation, transit, and cleaner fuel options..

### These plans form a comprehensive project that will:

- Create common regional transportation goals, objectives, and performance measures.
- Ensure future transportation investment decisions consider the full range of tools required to meet community need and the region's goals and objectives.
- Outline long-term and day-to-day transportation operations/needs, and produce strategies/projects that consider a variety of transportation options.

*For more information*

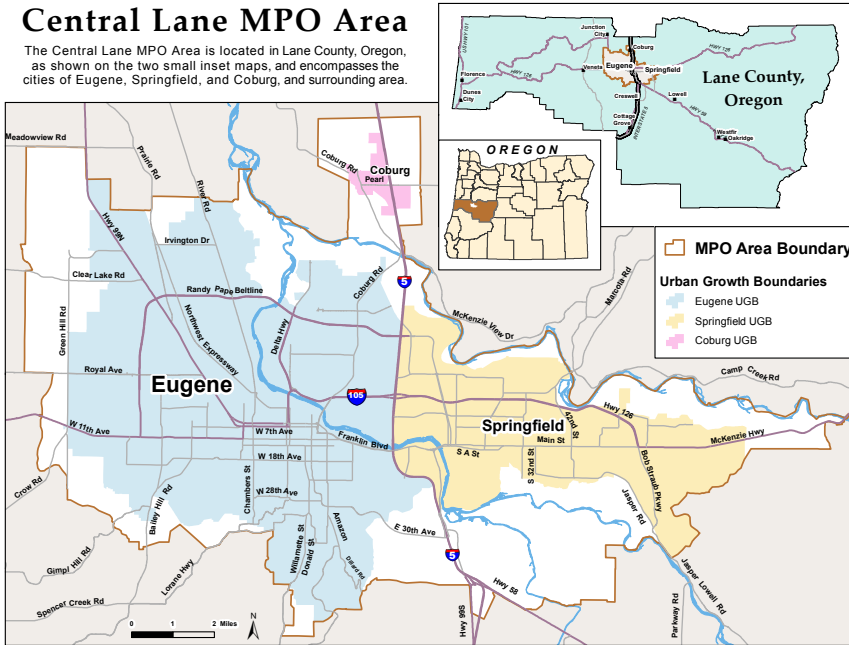
**Paul Thompson** Program Manager, Metropolitan Planning Organization  
541-682-4405 | [pthompson@lcoog.org](mailto:pthompson@lcoog.org) | [centrallanempco-rtp.org](http://centrallanempco-rtp.org)

## Who is Lane Council of Governments?

Lane Council of Governments (LCOG) is a voluntary association of local governments that operates as a regional planning, coordination, program development and service delivery organization in communities across Lane County. LCOG’s mission is to coordinate and provide high-quality public services that enhance the quality of life for its citizens. **Lane County of Governments manages the Central Lane MPO, which is creating the RTP.**

### Central Lane MPO Area

The Central Lane MPO Area is located in Lane County, Oregon, as shown on the two small inset maps, and encompasses the cities of Eugene, Springfield, and Coburg, and surrounding area.



The Central Lane Metropolitan Planning Organization (CLMPO) is the forum for cooperative transportation decision making for the Eugene-Springfield metropolitan area and Coburg. The decision making body of the CLMPO is the Metropolitan Policy Committee (MPC), comprised of area public officials who channel federal funding for transportation projects through a comprehensive planning process.

#### The five core functions of the CLMPO:

- Establish a fair and impartial setting for regional decision making.
- Evaluate transportation alternatives.
- Maintain a long-range transportation plan.
- Develop a Transportation Improvement Program and prioritize projects.
- Involve the public.

## We want your input

The overall planning effort will take approximately a year and a half, including public outreach and opportunities for public input. The RTP is expected to be completed and adopted by the Metropolitan Policy Committee (MPC) in June 2021.

Below is a timeline of outreach activities that will be used throughout the project to inform a broad, diverse public audience and solicit input related to community needs and possible transportation improvement concepts.

### Why is this project necessary?

It’s required for state and federal funding. Many state and federal funding sources require an established plan be in place that identifies needs and how to meet them.

