



Tri-City Water Resource Recovery Facility Outfall Project

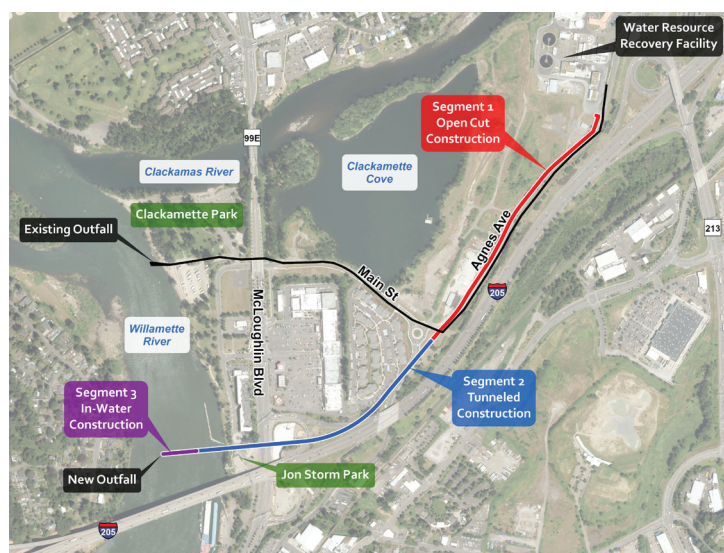
Clackamas Water Environment Services (WES), the regional wastewater treatment provider for the City of Oregon City, West Linn, Gladstone, Johnson City, and unincorporated Clackamas County, is preparing to install a new outfall pipeline.

The new 90-inch diameter outfall will run from the Tri-City Water Resource Recovery Facility parallel to I-205 and under the OR 99E off-ramp. The outfall pipeline will then run underneath Jon Storm Park and discharge into the Willamette River, just north of the I-205 Abernethy Bridge.

The current outfall was constructed in 1984 and is nearing capacity during peak wet weather events.

Construction will take place in 2024 and 2025. The project, which has a construction cost of \$58,444,000, will be funded as part of WES' Capital Improvement Plan

The new outfall location will be upstream of the existing outfall, which is near a cold-water refuge for migrating fish at the mouth of the Clackamas River. Construction crews will adhere to the Oregon Department of Fish and Wildlife's



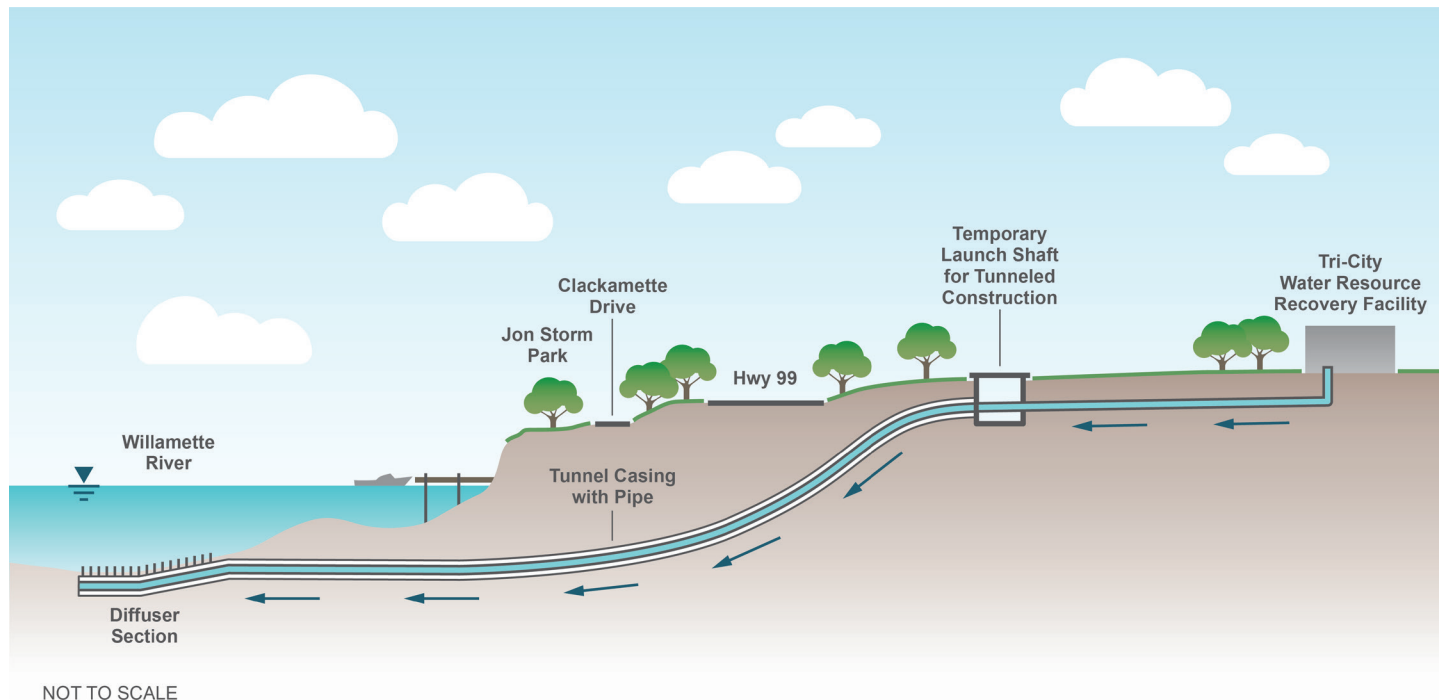
Map of alignment

Willamette River in-water work window. The in-water work guidelines were created to minimize potential impacts to fish, Pacific lamprey, wildlife and habitat resources. In addition to the in-water work guidelines, construction will follow the requirements of all of the other permits obtained for this project.

As part of the extensive permitting efforts for this project, WES' consultants performed the required archaeological investigation and are working in compliance with the National Historic

Preservation Act, as well as working with the Confederated Tribes of Grand Ronde Tribal Historic Preservation Office.

WES will continue to work closely with ODOT to coordinate the construction alongside the I-205 Improvements project, which include the widening of the Abernethy Bridge.



the tunnel path

If you would like additional information about this project, please follow the link below which will take you to a project webpage. This webpage will be updated with additional information as the project progresses:

www.tricityoutfall.info

For more information, contact:
Clackamas Water Environment Services
Customer Service
Phone: 503-742-4567
Email: wescustomerservice@clackamas.us



CLACKAMAS

**WATER
ENVIRONMENT
SERVICES**